

Stamping Around

Newsletter of the Mid-Cities Stamp Club

Arlington Meetings: First Wednesday @ 7:00 p.m.

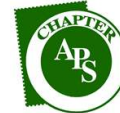
Bob Duncan Center, 2800 S. Center St.

Flower Mound Meetings: Third Wednesday @ 7:30 p.m.

3020 Corporate Ct, Ste 400 (Step Up Sports Medicine)

Lake Granbury Meetings: 4th Tuesday @ 7:00 p.m.

Bentwater Activities Center (adjacent to Bentwater Marina)



#891-076252



CHAPTER MEMBER

#90



#53-3364

Volume 37, Number 10

<https://www.mid-citiesstampclub.com>

October 2024

USPS: 3, No, 4 Rate Changes in 1 Year...

By Peter Elias

Back in the old days (remember those?), the USPS sometimes took many years to change postage rates. For many years lately though, they've had at least 1 yearly change that took place on a Sunday near the middle or end of January.

Then they started implementing additional rate changes during the year, such as in April or July. This year (2024), the first rate changes took effect on January 21. A 2nd rate change took effect on July 14.

Then recently I read about the "seasonal / holiday price adjustments", that will affect mostly package shipments (Ground Advantage, Priority Mail and Priority Mail Express), meaning that other mail classes should remain the same (1st class mail, postcards, international 1st class and media mail). This rate change (the 3rd one I knew of), is what they call a "time limited price change" that will take effect on October 6, 2024 and end on January 19, 2025 (which is on a Sunday). So given that, will we get the usual "annual" adjustment on Sunday, January 19 or 26, 2025 (which would be in line with past changes)?

And given this "time limited" holiday price change (which is increases), when that expires on January 19, are we going to get the previous rates for a week or slide straight into the usual January increases?

But as they say, "wait, there's more..."; when I lamented this 3rd change to a fellow collector, he replied, "what about the September 16 rate change"? Huh? That was news to me! So apparently, after researching it a bit, there was another set of rate changes that effect September 16, just ahead of the October 6 changes! These September 16 changes apparently only affect (as I've read) rates for package shipments to "some" ZIP Codes (some in this case is approx. 17,000+ out of 41,000+ ZIP Codes, so more than just "some" as far as I am concerned).

I have not yet (as of writing this on 9/11) seen anything more concrete than a large spreadsheet with over 17,000 ZIP Codes listed. So, having this many ZIP Codes be affected, you definitely will have to look online to see how much the rate is to where you are shipping something with USPS. You could of course stand in line at the post office to find that out (or use their SSK kiosk - if it has one - in the lobby). That may be fine for the average consumer, but most times, as a stamp collector, when shipping a package, I like to use stamps and have the full postage already applied before I get to the post office (for the tracking label and acceptance scan).

And how will the September 16 changes for packages compare with the October 6 changes? I haven't had a chance to compare that yet (and probably won't...).

USPS Brown GA Boxes

Peter Elias

I mail a fair amount of items at the Ground Advantage (GA) rate, but usually they're just stiffened 9"x6" envelopes, although once in a while something might be in a box. When you search, it seems everyone says the USPS doesn't provide boxes for the GA rates, just for PM & PME.

I did, however, happen to see this brown GA box at the "Parcel Forum '24" trade show held in Grapevine at the Gaylord Resort on September 17 (and there was also a larger GA box behind the one you see, between the 2 white envelopes).

Speaking with one of the USPS reps briefly at the booth, he didn't seem to know much about these particular boxes from what I recall...



Photo by Peter Elias

That all said, I have NOT seen anything at the USPS website about these brown GA boxes (such as in the shipping supplies section) when I searched for it just now.

I really wanted to see the item info at the bottom left of the box (but the picture is out of focus there).

<u>Article Index</u>	<u>Page #</u>
USPS: 3, No, 4 Rate Changes in 1 Year	1
Editor's Forum, Calendar & Secretary's Report	2
EXPO 2024 Dealer Listings	3
Been There - Done That (Paris Metro)	4
Club Meeting Minutes	4, 10, 12
Been There - Done That (Cancer & Wetterhorn)	5
Staffa: Local Post or Cinderella	6
No ¢ents, No Sense or Nonsense?	6
Been There - Done That (Top of Europe)	7
President's Message	8
Fact of the Month: Israeli Gum	8
Member & Dealer Ads	8, 11, 15
Granbury Auction Lot Listing	9
Never-Ending Supply	10
TSDA Bourse August 27	11
Handle Carefully	12
Been There - Done That (Swiss Railway Conductor)	13
FDC Problems	14
Unique Swiss Stamp Surcharge	14
MCSC - Ballot for 2025-2026 Club Officers	14
Meet & Eat	15

Stamping Around

Newsletter of the Mid-Cities Stamp Club

Peter Elias, Editor (news@mid-citiesstampclub.com)

Stamping Around is published monthly by the Mid-Cities Stamp Club. Material in this [newsletter](#) may be reproduced in other philatelic publications if the source is acknowledged. Opinions expressed are those of the authors, and do not necessarily represent those of the Mid-Cities Stamp Club or its officers.

2023 - 2024 MID-CITIES STAMP CLUB OFFICERS & BOARD OF DIRECTORS:

President – Ken Aldridge
Vice-President (Arlington) – Rick Howell
Vice-President (Granbury) – Dave Stockbridge
Vice-President (Flower Mound) - Dan Golden
Secretary – Janet Moyer
Treasurer – Thomas Cunningham

Board of Directors (voting):

Peter Elias Ralph Poore Ken Wills
Immediate Past President: Rich Hildebrandt

Membership in the Mid-Cities Stamp Club is available to anyone of good character interested in philately. Feel free to attend any of our 3 different meeting sites in the greater Dallas / Ft. Worth area! Dues are only \$12 per year (which includes an emailed or online color newsletter, or \$22 for mailed black & white newsletters). For more information, the editor is reachable during business hours at (972) 671-0077 or : editor@mid-citiesstampclub.com

For a membership application write to:

Mid-Cities Stamp Club
P.O. Box 820784
N. Richland Hills, TX 76182-0784

or visit: <https://www.mid-citiesstampclub.com>



"Editor At Work"
LEGO™ MOC by Marcos Elias

Editor's Forum

By Peter Elias

Given the general constraints in doing a newsletter around the standard paper size (and that a small number do still have to be printed and mailed), it means that I have to make things fit on each page. Sometimes just a simple enhancement of a sentence, by adding a clarifying word for example, will now not have the

whole paragraph fit! So I end up having to tweak font sizes & illustration sizes.

While Arial 10 point (what you are reading now) is generally a good size to use, sometimes I have to use various sizes between 8 to 10 points, and sometimes 8.8 points is an exact fit! It is a bit odd if you are writing something and one or two lines would end up on a whole new page by themselves, so I'd rather not do that.

While I'd love to keep all font sizes totally uniform in size, it is just not always possible (and I see that in other magazines & newspapers as well). Some of the commercial magazines that I receive, have fonts much smaller than what I use!

Reading the newsletter more comfortably might mean using the ability of your PDF reader to enlarge it a bit on your computer screen. Unfortunately that option does not exist for the print copies.

Thank You!

By Skip Ely

Thanks to Jerald Zimmerman for a large donation lot that he obtained from the late dealer and former club member Melvin Edmonds. We appreciate the material and effort to get it to us!

Coming Attractions

2024

SEP.24 MCSC — LAKE GRANBURY Meeting

Program: Club Auction

OCT. 2 MCSC — ARLINGTON Meeting

Program: Club Picnic, Bob Duncan Center

OCT. 5 Dallas Postcard Club Meeting

Monthly Meeting. 1st United Methodist Church, 801 W. Avenue B, Garland, TX 75040 (Room 103-105, 2 PM)

OCT. 11 & 12 Greater Dallas Postcard & Paper Show

Holiday Inn & Suites, 3220 Craig Dr, McKinney, 75070
Friday, March 8: Noon - 6 P, Saturday, March 9: 9 A - 4 P
Admission is \$5 (early bird is \$10 on Oct. 11 at 11 A)

OCT.16 MCSC — FLOWER MOUND Meeting

Program: Extended Show & Tell and philatelic Discussions

OCT. 19 MCSC - EXPO Planning Meeting, 11 AM

David's BBQ, Pantego, TX

OCT. 22 MCSC — LAKE GRANBURY Meeting

Program: Club Picnic & Auction

NOV. 2 Dallas Postcard Club Meeting

Monthly Meeting. 1st United Methodist Church, 801 W. Avenue B, Garland, TX 75040 (Room 103-105, 2 PM)

NOV. 6 MCSC — ARLINGTON Meeting

Program: Annual Meeting & Election
"Wonderful World of St. Vincent Philately"

Secretary's Report

By Janet Moyer

Applications Received:

Glenn Celerier (#676), collects USA, Panama & France

New Members:

Richard B. Kincaid (#675)

Resignations:

n/a

Deceased:

n/a

Membership Summary – September 18, 2024

Membership as of August 21, 2024	99
Applications Rec'd (counts as member next month)	1
New Members	1
Not Renewing for 2024	(0)
Resignations	(0)
Deceased	(0)
Reinstatements	0
Membership as of September 18, 2024	100



[EXPO 2024 - Dealer Listing](#)

Table	Dealer (Business Name)	Philatelic Specialties	Email Address / Website	Phone
1	Jeffrey Fishman (Double J Stamps)	SUPPLIES, Worldwide Sets and Singles U.S. Plate Blocks	double_j_stamps@yahoo.com	847-843-8700
2	Kurt Harding (Stamp Center of Texas)	Worldwide Stamps and Covers World Postal History, Collections, Souvenir Sheets	klingsor88@hotmail.com	210-240-4083
3	David Cobb (Newport Harbor Stamp Co.)	U.S. Classics, Plate Blocks, Errors	NewportHarborStamps@gmail.com	949-701-3392
4	L. W. Martin, Jr. (Crown Colony Stamps)	British Commonwealth	lw@crowncolonystamps.com	713-781-6563
5	Jim Myers (stampuniversal.com)	USA, Worldwide (Stamps, Souvenir Sheets Full Sheets), Postal History and Stationery and MORE	jasdmyers@earthlink.net	214-577-7598
6	Byron Sandfield (Park Cities Stamps)	US, US Postal History, US Locals & Carriers US Revenues, Literature, World Collections	bsandfield@gmail.com	214-361-4322
7	Kenneth Scheller (The Stamp Connection)	US, British Empire, Europe & Colonies Worldwide, Topicals	thestampconnection@gmail.com	281-691-5911
8	Pat McElroy (D & P Stamps)	Portugal & Colonies, France & Colonies Italy & Colonies, British Colonies, Latin America, Worldwide	pat@dpstamps.com	619-987-1019
9	Scott Couch (Tiger Collectibles)	US #1 to current, BOB, Revenues, Possessions, Postal History, Early Plate Blocks, Better FDCs	tigercollect@sbcglobal.net	816-405-3633
10	Jonathan Topper (Topper Stamps & Postal History)	US and Foreign Collections and Covers	jonathan@topperstamps.com	832-518-6558
11	Labron Harris (Labron Harris Postal History)	US and Worldwide Postal History	labronharr@aol.com	240-447-3769
12	Charles Deaton	US and Worldwide Stamps and Covers Collection Lots	cwdeaton@aol.com	713-927-9948
13	Thomas Cunningham (Cunningham Philatelics)	US, US B-O-B, US Possessions, Confederate States Canada, British, Ireland, World, Pre 1940, Country Collections, Covers	CunninghamStamps@aol.com	214-546-1179
14	Kirk McKenzie (Oklahoma Stamps)	United States, Graded Stamps, Appraisals	kirkmckenzie@cox.net	918-249-5813
15	Brian Hunt (Hunt & Co.)	US & Worldwide, British Colonies, Collections Website with Internet/Mail Bid Auctions	www.huntstamps.com info@huntstamps.com	512-837-9997
16	James F. Taff	US, Confederate States, Germany, British & French Colonies, Collections	jt9955rex@gmail.com	916-709-0412
17	James C. Garrett (JC's Philately)	USA, Canada, Germany, Worldwide	jagg4246@gmail.com	713-857-6920
18	Steve & Theresa Stewart (Zayix Stamps & Collectibles)	Worldwide Stamps & Postal History	stamps@zayix.com www.zavixstamps.com	832-225-6074
19	Ken Nieser (Nieser Stamps)	Latin American	www.kennieser.com Kennieser@yahoo.com	832-212-1285
20	Steven Crippé (Circle C Stamps)	US and Worldwide, Errors	Scrippe@gmail.com	214-980-2116
21	Michael & Cecilia Ball (A to Z Stamps)	USA 1840 to Present plus all BOB, Comprehensive Worldwide Stamps, Appraisals	ishop@worldwidestamps.com	248-709-8939 480-844-9878
22	Kyle Nybo (Kyle Nybo Stamps)	US & Worldwide Stamps Collection Lots	nybostamp@gmail.com	801-550-8138
23	Steve Carpenter (Carpenter Collectibles)	US Sheets, Plate Blocks, Covers, Uncut Press Sheets, USPS Stationery & Collectibles, Postal Art & Posters, Fleetwood Proof Cards, Memorabilia	SJCarp22@verizon.net	214-240-9653
24	Leonardo Palencia (Leo Stamps)	Worldwide Stamps and Covers, Collections Better USA	gypleo@yahoo.com	512-999-4911
25	Jimmy Tomchesson (EAS Stamps)	US Covers, Postal History, Texas Covers US Classics	jtomchesson@yahoo.com	832-278-5268

Paris Métro

By Peter Elias

The Paris Métro (short for Métropolitain) is the name of the subway system used in Paris. France, Scott #2747 (shown slightly enlarged below), commemorated its 100th



Anniversary in 2000 (although the stamp is dated 1999 on the right side).

Consulting Wikipedia, it states that the Métro has a length of 152.6 miles, 244 stations and is the 2nd busiest subway system in Europe with

1.498 billion passengers in 2019! In comparison, the NYC subway has 660 miles of tracks, 472 stations and an annual ridership of 1,151,998,158 in 2023.

About 9 years prior to its 100th anniversary, 4 of us (my brother, 2 of our old college buddies and I) were on a trip to Europe and ended up in Paris for about 2 or 3 days.

While I love to drive, if visiting large European cities such as London or Paris, it is best just to forego driving and leave transportation up to someone else (no parking issues!). So we got a hotel on the outskirts of Paris and used the Métro to get into the city; I believe it was the 1st time I ever rode a subway, and it had to be in a country whose language I didn't really speak (well, my 3 years of French in high school 12 years prior were of limited use at this point). But we managed to get around just fine; one of my Métro tickets is below (since I tend to save tickets from my travels and incorporate them into my photo albums).



A Métro sign such as shown to the left points the way to the underground, usually via steps, sometimes escalators. One of my friends is shown at left, the other one in the background of the picture below (buying a ticket) behind my brother who just went through the turnstile. We had a short, but great visit in Paris!



Photos by Peter Elias



MCSC Granbury Meeting Minutes

August 27, 2024

by Stan Christmas

Call-To-Order:

- Dave Stockbridge called the meeting to order at 6:50 PM.

Show & Tell:

- Jim Myers: Jim showed a Faroe Islands Stamps and gave some history of the islands.
- Stanley Christmas: Showed three covers he found at the TSDA in the dollar box.
- Les Barton: Showed some stamps from São Tomé and Príncipe (St Thomas) Islands
- Bob Coleman: Bob noted he saw an ad on TV selling Viz Fiz watches. The Vin Fizflight was the subject of last month's program by Rick Howell.

Awards:

- Ken Aldridge, Mid-Cities Stamp Club President, presented Davis Stockbridge with the MCSC Club "Spark Plug Award" for his long service to the club.

Club History:

- Dave Stockbridge gave a brief history of the origin of the Granbury Branch meetings and the branch's history.

Quiz:

- Stanley Christmas gave the "Where Am I" quiz this month. After six questions, the group was told it was British Antarctic Territory.

Announcements:

- Dave Stockbridge:
 1. The status of Gene Atkinson and Denny Ludlow.
 2. Linn's is going digital-only via subscription.
 3. Next month is the semi-annual auction. Lots are due to Dave by September 20. You can bring your auction lots to the Arlington meeting Sept 4. There will be off-site bidding through Dave.
- Jim Myers:
 1. The Greater Houston Stamp Show will be held September 20-22, 2024. This year's show will feature 27 stamp dealers from all over the United States & exhibits of rare stamps and postal history.
 2. He also reported that around 180 people attended the TSDA show held August 23 & 24.
 3. Jim reported on the status of Kurt Harding.

Donation request:

- Jim Case asked for Granbury Mystery Box donations. The Mystery Box will be auctioned off at the EXPO Silent Auction.

Program:

- Ken Aldridge gave a program on the stamps of the Faroe Islands.

Door Prizes:

- The winners of the door prizes for this month were Joe McFarland, Donna Howell and Madeleine Myers.

Adjournment:

- Dave adjourned the meeting at 8:20 PM.

Cancer & Wetterhorn

By Peter Elias

Shown is Switzerland, Scott #722, one of 14 different stamps issued from 1982 - 1986 (#717 - #728A) featuring the 12 signs of the Zodiac plus various scenery.

But wait, there's only 12 signs of the Zodiac, so why 14 stamps? For whatever reason, 2 signs of the Zodiac were each featured twice (with different scenic views): Gemini & Virgo.

What is the connection (if any) between a sign of the Zodiac and a particular scenic view on these stamps? I have no clue for this one (but do for the one featured on page 7).

According to the Scott catalog, these stamps were printed as "Photogravure & Engraved". The difference is, that "engraving" uses a physical tool to cut the dots & lines that make up a design onto a printing cylinder (creating recesses where ink will be and then transferred to paper), while "photogravure" uses a photographic process and the chemical etching of the design on a printing cylinder, creating recesses that way. And for one particular MCSC club member, Dr. John Barrett, who had an exhibit about a Swiss stamp designer at EXPO 2021: this stamp was designed by Karl Bickel (shown at bottom right of the stamp design). From what I can tell, other stamps of this series were done by Bickel as well.

The design on this particular stamp above (which I'm showing at double the actual size), depicts the "Cancer" Zodiac sign, and a view of the Wetterhorn (along with some huts, trees & a meadow at the base).

Every one of us in the club could write one of these articles, as we are all born under one of these signs of the Zodiac, and thus use one of these 14 Swiss stamps to illustrate that sign.

For example, San Marino issued an attractive set of 12 Zodiac stamps in 1970, #716-727, fairly affordable at around 3 bucks. I had a hunch, and checked my old childhood worldwide stamp album (unchanged since around 1980), and actually found the Cancer sign stamp. Befitting a typical childhood collection, I only had the 5 lowest values, and did actually have the 4 Lire stamp shown. I'm sure one could form an interesting collection around one's own Zo-



diac sign. Just a quick Google™ check showed stamps from Canada, Russia, Spain, Israel and other countries.

What is interesting to note, is that we call the Zodiac sign shown in the two stamps as "Cancer". In German, we call it "Krebs" (which can mean both cancer or crab), since the crab is the actual symbol shown. So why then is it that in



English, it is "cancer" and not "crab"? Inquiring minds wanted to know, so a quick Google search showed this (via an "AI response" - sigh...):

The word "cancer" comes from the Latin word cancer, which means "crab". The name comes from the Greek word karkinos, which also means "crab". Greek physicians in the 5th and 4th centuries BCE used the word to describe tumors, possibly because the veins in the tumor looked like crab legs, or because crabs are aggressive and obstinate. The Greek physician Hippocrates (460–370 BC) may have first used the term, and around 47 AD, the Roman physician Celsus translated the Greek word into Latin as cancer. The name has remained the same throughout the centuries.

As you can probably guess by now, I didn't just randomly choose this particular stamp in the series, it is because that is my Zodiac sign. What does that say about me or anyone else's Zodiac sign? If you got time, there's lots of stuff written about this, so I recommend that you check the internet...

Ok, enough about the Zodiac. The other part of this stamp shows the Wetterhorn. That didn't exactly ring a bell a with me, so I had to consult Google Maps (see below).

The Wetterhorn is a mountain peak just northeast of the famous Eiger, Mönch & Jungfrau (not shown on the map below). I didn't realize it until now (or perhaps I forgot), but back on September 10, 2000, this (see photo below) was my view as we all stepped off the Grindelwald (#1 on map) bus at the Hotel Grosse Scheidegg (#2) bus stop (a minor mountain pass). Towering over the bus on the left side of the photo is part of the Wetterhorn (#3). To the right of the bus, in the center, you can see the Eiger, Mönch & Jungfrau mountain peaks in the background.

After exiting the bus, our family took the hiking trail that starts on the right side of the photo and took it due west (on a fairly level trail to "First", pronounced like "fierced" (#4), walked steeply downhill to "Bort" (#5) and then took the gondola back down from there to Grindelwald (#1). Look at the scale at the bottom right of the map, distances weren't all the great. So this was a double "Been There" stamp for me! I've not seen any other stamps that have 2 totally different subjects on 1 stamp that pertain to me!

The next day, September 11, 2000, we took a ride up to the Jungfrauojoch nearby (and that is the subject of a separate article on page 7); little did we know at the time what would happen exactly 1 year later... But, September 10, 2000 was a beautiful & uneventful day, with lots of great views! --> So was the next day, pg. 7

Photo by Peter Elias

Yes, there are pictures of me from this hike, just not enough room in this article to show them....

This map can be found at:
<https://www.google.com/maps/place/Berghotel+Grosse+Scheidegg/@46.674408,8.0848718,13z>

Above: Bus ticket from Grindelwald (#1) to Grosse Scheidegg (#2) purchased on 9/10/2000. Erroneously dated 9/11/2000; perhaps that was the expiration date (since the validity was only 2 days)?

Below: At the end our hike, we took the gondola from "Bort" (#5) back down to Grindelwald, and this ticket is correctly dated 9/10/2000.

Staffa: Local Post Or Cinderella

By Geoff Owens



Recently my friend Tom Cunningham gifted me a few stamps of Staffa, which he described (tongue in cheek) as genuinely postally used. This led to a spirited discussion of what exactly constitutes postal usage and as I am wont to do, I turned to the noted authority, Mr. Google, to see what he has to say.

Apparently it is factual that sometime during the 1970's, the British postal authorities granted the right to issue stamps to the owners of several islands off the coast of Scotland. These stamps were to pay the cost of transporting mail from these islands to the nearest official post office on the mainland. Such mail was to be additionally stamped with regular British stamps to pay for normal postal delivery to the ultimate addressees.

As regards Staffa, it does appear true that a postbox was installed on or near a jetty where visitors to the island could deposit mail which would be collected by a boatman who transported this mail to the mainland (presumably along with the people who had done the mailing as no one lived on the island). But it seems this postbox was taken down in 1980 or shortly thereafter.

Many readers will know of the misadventures and scandals of philatelic personality Clive Feigenbaum in the 1970's and 1980's.

In 1979 a company owned by Mr. Feigenbaum, Crailheath, Ltd., entered into contracts with the lairds (landowners) of a number of these islands to produce stamps on their behalf. The production rights were assigned to another company, Global International, based in Liberia which may or may not have also been owned by Feigenbaum. This company thus owned the printing plates or masters used to print the stamps.

Then another Feigenbaum company, Philatelic Leasing Ltd., in collaboration with Massachusetts-based Dell Philatelic Consultants Ltd., marketed leases of the masters at greatly inflated prices to wealthy Americans who under the tax laws of the time could write off the cost of these leases. This scheme landed Feigenbaum and his associates in U.S. court where they lost and the whole affair was a great scandal at the time.

Returning to the actual stamps, it appears that after about 1980, none of them were used for even purported postal purposes. Any early issues of Staffa that were affixed to mail carried by boat to the mainland might be considered valid local post usage but I suggest they should be on clearly used cover to evidence the fact.

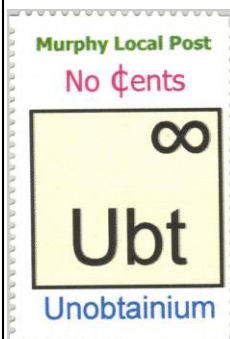
But that begs the question: what is genuine postal usage? Obviously, payment for delivery of a message is actual usage, but when the sender of the message is very likely sitting in the same boat that is carrying the message and could just as easily mail it upon reaching the mainland, does that count? I suppose it is up to the whims of the individual collector.

Of course Staffa is not the only entity for which the question applies. Others are Stroma, Einhallow, Bernera, Caldey, St. Kilda, and more, although some never made much if any pretense of being a real postal service (and also had Feigenbaum's fingerprints on them). One well-known exception is Lundy which does indeed provide mail service from an inhabited island to the mainland. Herm Island is another example of a formerly legitimate local post service, although it ended in 1969.

In closing, I'll state my opinion that local post stamps are in a special category, not official postage stamps but also not Cinderellas which in my view are gummed labels that had or have no postal validity or purpose of any kind. So in my view the vast majority of Staffa stamps are pure Cinderellas but a few early ones MAY be local post stamps. But I'm skeptical.

No ¢ents, No Sense or Nonsense?

By Peter Elias



My (self-employment) business mailing address is at a UPS Store in Murphy, TX, which does NOT have a regular post office (although there is a somewhat useless USPS "CPU" – Contract Postal Unit – at a storage facility in nearby Wylie, about a mile further away).

That said, many items that I mail out get one of these "Murphy Local Post" stamps, since I have to do a 10-mile roundtrip to drop off items at the Plano main post office (the nearest one to my house). Now that said, my local post label is denominated as "No ¢ents" (a nod to the word nonsense). Maybe I should add a denomination -> how about "2¢ Worth" ?

I print these myself, using unprinted Pitney Bowes "Mail & Go" Stamp labels (so technically these were the base labels that were used as legitimate postage (USA Scott #CVP84) when you bought them at Pitney Bowes Mail & Go kiosks; there used to be one nearby from late 2011 to early 2013 as a trial, inside a Super Target Store in Garland (just a few miles away). I had a 1-frame exhibit about the "Super Target Mail & Go Trials" 10 years ago at the MCSC EXPO.

I print these on PB sheetlets of 10 (which are totally blank before-hand, except for some PB verbiage in the top margin area... Sad thing is, that after 12 years, the self-adhesive is getting a bit weak, and won't stick well anymore, necessitating use of a glue stick...

So, given that these are only on my business (or personal) outgoing mail items and that I obviously don't charge myself for them, but do incur an expense (gas) in getting my mail to the Plano Post Office, that makes these what exactly? A cinderella? A true local-post item? Or just a "sticker"?

I suppose if I put some sort of denomination on them, which I would charge for, then put them on other people's mail (presumably also properly franked with USPS postage), that I would then drive to the Plano post office, only then could these be called "local-post" stamps, for now they're just a cinderella or sticker. The weird thing about taking mail from Murphy to Plano, is that Murphy street addresses have a Zip Code of 75094 (I rent a Private Mail Box at the UPS Store there). On the other hand, if you have PO Box at the Plano main post office on Jupiter Rd (which I also do), and that is also 75094! Confusing, huh? Murphy's mail is delivered via the Plano main post office... Is "Murphy's Law" in effect in Murphy? And there is a "Murphy Complex" there as well...

Top of Europe

By Peter Elias

Near Interlaken (and technically closer to Grindelwald) in Switzerland, lie the mountains named the Eiger, Mönch & Jungfrau (Eiger, Monk & Virgin / Virgo). While they are high, at 13,015, 13,484 & 13,642 feet above sea level, they're not Switzerland's highest mountains. That honor goes to the Dufourspitze at 15,203 feet, and is Europe's 2nd highest mountain. The honor for highest mountain in Western Europe goes Mont Blanc in France at 15,777 feet. You'd have to be a hardcore mountain climber to get to the top of Dufourspitze or Mont Blanc.

However, while there are 28 mountains higher than the Jungfrau in Switzerland (according to https://en.wikipedia.org/wiki/List_of_highest_mountains_of_Switzerland), the Jungfrau has one big advantage: you can take the train up there!



Above: My ticket from June 22, 1986. Quite a bit less than, at only US\$41.30 on that day.

Yup, the Jungfrauobahn will take you up to the Jungfrauoch ("joch" meaning "yoke" or "saddle", so basically a "dip" or "pass" in a mountain range). I've taken that train at least 3 times from what I recall; the last time was exactly 1 year prior to 9/11. Back on 9/11/2000, that round-trip ticket from Grindelwald (basically I don't know whether a 1-way ticket is even possible!), cost CHF 137.00, which was US\$ 77.37. According to their current [ticket site](#), that same ticket now costs CHF 211.00 (= US\$ 248.70 as of 9/5/2024), so quite a chunk more. That said, it is definitely worth the money! The views are stunning (just pick a day without clouds).



The stamp at left is a sheet corner single from Switzerland #1446, issued in 2012, commemorating the 100 year anniversary of the Jungfrau Railway.

Once this train leaves the Kleine Scheidegg Station, it soon goes into a tunnel and ends near the Jungfrauoch inside the mountain (I showed a cover from their post office in the November 2017 issue of Stamping Around). The current train is

shown on the stamp above, which also shows the Sphinx Observatory at the top.

I turned the photo that Annie took on 9/11/00 at "Top of Europe" into a "PhotoStamp". Sadly while the photo is "sharp", the image on the stamp is a bit fuzzy due to limitations in the printing process by Stamps.com (see right column at the top).

Photos by Peter Elias



Jungfrauoch station on 6/22/1986



Photo by Annie Elias

The picture at right shows the Sphinx Observatory at the top, and an observation building grafted on to the side of the mountain (with views of the glaciers) and a restaurant below (which are at approximately the same level as the train station). An elevator takes you to the Observatory.

Switzerland #414 (below) commemorates the



50th Anniversary of the Jungfrauoch station.

In 2022, Switzerland commemorated the "Sphinx" research observatory (left).

Scott #724 (from the 1980's) also shows the Aletschglacier plus the Eiger, Mönch & Jungfrau in the background, plus the sym-



bol for Virgo (=Jungfrau).

There is (or was) a brief intermediate stop inside the mountain and passengers



could step out to the edge of the mountain and see the "Eismeer" (sea of ice). They even had a postmark from Eismeer (see above:

back of the 1909 postcard shown above left), from August 15, 1909!

That concludes this stamp "road" (err, "rail") trip from Switzerland, which again shows that you can illustrate your life with philately, not just photos & videos!





President's Message

By Ken Aldridge

I'm at home recovering from hip surgery and things are going well. Thanks for the notes and messages, everyone.

The September semi-annual auction was amazing! You talk about deals....Jeff Jessup put up 10 large boxes each full of goodies that sold for bargain prices. The Granbury auction set for September has been postponed until the October meeting.

The October meeting at Arlington will be our annual picnic. Hot dogs, buns, drinks, plates and utensils will be provided. Please bring a side dish or dessert to share.

The November meeting at Arlington will be the announcement of elected officers for 2025-6 and our annual Club Meeting. This is the time where one can suggest changes to Club procedures, by-laws, etc.

The December Arlington meeting will be a gift exchange, no meal this year. Bring a wrapped, unmarked philatelic related item valued at \$10 or more.

[Editor's Note: Members, please vote for the officers, the ballot is on page 14].

Fact Of The Month: Israeli Gum

By Alliene Franklin

The lickable gum on Israeli postage stamps is certified kosher. So, everyone - secular to religious - can lick the glue on the stamps without fear of breaking a kashrut law. Kashrut is the body of Jewish Dietary Laws. It is Hebrew meaning fit, proper or correct.

[Editor Notes: Some of my thoughts regarding this were, what about the situation here in the USA? All those years that US stamps had lickable gum, how did this work here? I've never heard of any rabbis certifying that the gum that the Bureau of Engraving & Printing put on their stamps was kosher. And as a corollary to this, what about the gum that used on envelope flaps & any sort of mail-related stickers (i.e.: Airmail stickers)? What about all the other countries in the world with Jewish populations? Inquiring minds want to know! Feel free to email the editor at editor@mid-citiesstampclub.com]

[Right: Priority mail stickers with lickable gum from Swiss Post, printed in May 1999 in 4.5 million strips of 10]



Be sure to visit the Club website on the internet:

← <https://www.mid-citiesstampclub.com>

For recent online newsletters see the club website above or:

<https://BetweenThePerfs.com/MCSC> →

(for older newsletters please contact the newsletter editor)



stampsuniversal.com

Visit us at area Stamp Shows



- * TSDA
- * HOUPEX
- * EXPO

US/WW Classics, Modern, SONs

Visit our new online store

@ <http://www.stampsuniversal.com>

James D. Myers
P. O. Box 2047
Coppell, TX 75019
(972) 304-1671



Exp. 12/24

cunninghamstamps@aol.com

Exp.12/24

(214) 546-1179

Cunningham Philatelics

Philatelic Consultants

Elusive Items
Stamps and Covers

Collections
Appraisals

THOMAS L. CUNNINGHAM
APS # 082424, TSDA

P.O. Box 863237
Plano, TX 75086-3237



Exp.12/24

Specializing in United States Stamps
Member APS, ASDA, NSDA

Kirk McKenzie
kirkmckenzie@cox.net

5813 W. Orlando Circle
Broken Arrow, Oklahoma 74011
918-249-5813

2024 Granbury Auction - October 22, 2024

1. World Wide Statesman Album - with countries A-E – 100s of M&U up to 1970's	\$20
2. World Wide Statesman Album - with several hundred mostly used stamps	\$10
3. World Wide Statesman Album – with K-S countries, many 100's of Mint & used stamps	\$20
4. Bulgaria – Large stockbook full of mint stamps and sheets – catalog value \$1,900	\$35
5. Dominican Rep. – Unused 2" – 3 ring binder with heavy stock pages from 1865 to 1960	\$ 5
6. World Wide Album – with 100's of stamps up to 1950	\$ 6
7. Belgium – 11 Vario pages with mint 7 used stamps and sets starting with #6 & 11	\$25
8. Barbuda – Issues of 1973 and 1974 all mint Scott #105 to #203 & sheetlets - cat \$61+	\$ 6
9. US – 18 Bicentennial First Day Covers in album with write-up about the events of each	\$ 3
10. US – Stockbook full of US plate blocks from 30's - 70's, all mint NH, almost 300, face value \$60+	\$25
11. WW Ambassador Album – 100's of stamps mostly used. Great starter collection. Up to 1960's	\$20
12. Bulgaria – 100's of mostly mint stamps of Bulgaria in blocks sheets, and singles	\$20
13. Germany – Binder w over 12 Vario pages with German stamps up to 1945, all cataloged	\$100
14. Netherlands – Stockbook w 24 pages of Semi-Postal, with cat #'s in order from B-1 to B555	\$12
15. Czechoslovakia – Collection of over 950 stamps most used on 50 pages in 2" 3-ring binder	\$10
16. US – Stockbook w Mint stamps from #654 - #1938 & labeled, Over \$150 in cat value	\$10
17. Jamaica – 312 stamps, mint & used, on album pages from 1860 to 1979 up to #470	\$18
18. Newfoundland – 13 album pages with 100+ stamps mint & uses from 1866 to 1947 cat \$400	\$20
19. Poland – Over 800 stamps from 1918 to 1964 mint & used cat near \$200	\$10
20. Bulgaria – Over 800 stamps on album pages mint 7 used with over \$200 cat value	\$10
21. Czechoslovakia, Slovakia, Bohemia & Moravia – pages with 1,000+ stamps from 1925 to 60's	\$ 8
22. European Countries – Over 500 stamps from several countries w mint & used	\$ 8
23. Turkey + - Over 400 stamps of Turkey + 140 from Asia and few others w cat value \$200+	\$ 6
24. Nauru – 8 Vario type pages, mostly mint over 100 different w some dup. over 200 total	\$ 8
25. World Wide Mixture – 8 souvenir sheets plus over 40 stamps in sets all mint except 1	\$10
26. Miscellaneous – Bag of stamps and more	\$ 2
27. Miscellaneous – Bag of stamps and more	\$ 2
28. World Wide – 10 sheets or partial sheets of used stamps from 8 countries	\$ 1
29. US – 3 glassines, 1 with 250 regular with face up to \$2, 2 nd with 100 for years 1976-2006	\$ 1
30. US – Voyages of Columbus – 1992 issue of 6 sheetlets with 1 cent to \$5, cat \$30.50	\$25
31. St. Vincent (11), Grenada (6) & Grenadines(10) – Grenada mint & 6 St Vincent mint	\$ 1
32. Antigua – 23 mint Commemoratives of the 1970's	\$ 1
33. Greece – 150 stamps with #122 – 2531 + c64 mint & used	\$ 1
34. Zimbabwe – 50 stamps including #414-729 mostly used	\$ 1
35. Grenada – 58 commemorative mint mostly from 1970's	\$ 1
36. Malaya – 14 mint & 25 used	\$ 1
37. Latvia – 96 Latvian stamps on 5 album pages, mint & used, cat. value \$100+	\$ 5
38. Estonia – 97 Estonian stamps on 4 album pages, mint & used, cat. \$50+	\$ 5
39. Lithuania – 100+ stamps on 7 album pages, mint & used, strong in air mail, cat \$100+	\$ 5
40. US – 2019 Scott 1313 full sheet of Polish Millennium, face \$2.50, cat \$6.25	\$ 2.50
41. US – Recalled Legends of the West sheet of 20, XF, cat value \$125	\$45
42. US – Not real copies of the Zeppelin stamps #C13-C15	\$ 3
43. US – Plate block of 4 – 50 cent air mail issued 1941, cat value \$47.50	\$10
44. Ascension – Mint sheet of 16 WWF Birds, cat value \$32.	\$ 5
45. US – Full sheet of 100 – 50 cent Documentary stamps of 1940, cat value \$100	\$20
46. US – 1999 US First Day Cover catalogue & checklist	\$ 2
47. China – Peoples Republic #1399, Souvenir sheet, Scott value \$525, eBay \$650 w orig. envelope	\$25
48. US – 100s of cut squares in cigar box, all used	\$ 3
49. US – Classic US stamps used in a British tin	\$ 5
50. US – 16 Space covers all First Day issues in red binder	\$ 5
51. World Wide – Souvenir sheets about 24 sheets and pages with cat value \$165	\$10
52. US – 2 1933 souvenir sheets in pairs of 25, cat #730 & 731w cat value of \$40	\$20
53. US – 3 Souvenir sheets w face value of \$7.60, #2438, 2433, & 3178b, cat value \$28.50	\$ 5
54. US – 1992 Voyages of Columbus souvenir sheets, \$16.34 face, cat value \$30.50 #2624-2629	\$10
55. US – Souvenir sheets #2624-2629 Columbus, Mars pathfinder #3178b, face \$19.34, cat \$34	\$11
56. US – Old Glory booklet, mint face \$7.40, cat value \$7.50	\$ 5
57. US – Souvenir sheets Columbus, Space Fantasy booklet, & Mars Pathfinder, face \$25.14, cat \$50	\$20
58. World Wide – 26 "Great Autos" stamps on cached cards, \$2.75 each for \$71.50	\$ 2
59. US – Box of mixed items incl. envelopes, cut sq., US used, & US mint, US cancelations	\$ 3
60. WW – 1968-72 Apollo & Astronauts – 24 sets all diff. in glassines in block folder file	\$10
61. Birds – Audubon 150 th Anniversary "Birds of America" 1979 set of 15 sheets in binder cat \$40+	\$20
62. Christmas – Stamps from around the World - 1980 Christmas issues from 48 countries about 200	\$10
63. WW – 2" binder w 100's of stamps from M and N countries, mint & used	\$15
64. WW – 2" binder w 100's of stamps from "B" to Canada, mint & used	\$15
65. WW – 2" binder w 100s of stamps from Canada to Croatia, mint & used, about 45 pages	\$15
66. WW – 2" binder w 100's of stamps from "E" to "I" countries, mint & used,	\$15
67. Jersey & Isle of Man – 1" binder full of mint & used stamps from the 2 island areas	\$10

Anyone not able to attend the auction may submit bids to Dave Stockbridge at stockdave44@yahoo.com before October 20th and Dave will bid for you. Provide Dave the "Item number" and the "Maximum amount you are willing to pay" and Dave will bid for you. Dave will start the bidding at the minimum and bid until you get the item or the bid goes above your maximum.

MCSC Arlington Meeting Minutes September 4, 2024

By Janet Moyer

Call-To-Order:

- President Ken Aldridge called the meeting to order at 7:02.

Attendance:

- 23 members and 2 guests were present – Larry Jent and Glenn Celerier.

Award:

- The APS Spark Plug Award was presented to David Stockbridge (see picture at right).

Officer Reports:

- Secretary Janet Moyer announced:
 - We now have 100 members.
 - The previous meeting minutes were in the newsletter.
- Treasurer Tom Cunningham sent a report of the balance in our treasury.

Announcements:

- Ken Aldridge announced The October meeting will be a picnic. Please sign up as to how many are coming and what you will bring. If you did not get to sign up, email Janet Moyer with the information. The club will furnish hotdogs, buns, and drink.
- EXPO - Ralph Poore:
 - Thanked the chairmen and the volunteers for the work they put into the EXPO.
 - The EXPO set-up will be Thursday, Nov.7th. We will meet at Flip's for dinner at 3:30 before the set-up. It is on the Southside feeder of 114 in Grapevine.
 - Take down will be Saturday the 9th. We need lots of hands to help get out on time.
- Dave Stockbridge has the Circuit books, both APS and club.
- Newsletter - Peter announced Linn's is no longer printing their weekly magazine, but will continue printing the Scott Stamp Monthly magazine.

- Scott Catalogue Auction – we are auctioning the Scott's Catalogue Volumes 1-3. Please see the newsletter for information on bidding.

Show & Tell:

- Stanley Christmas:
 - Showed envelopes from TSAD, one with postage due that the recipient had to pay.
 - An airmail "missent" to Fort Worth instead of Fort Sam.
 - An envelope with an Alex Trebek stamp that had the "Forever" printed upside down.
- Peter Elias:
 - A package that was overly packed for 20¢ worth of stamps.
 - A deck card from Dungeons and Dragons stamps.
 - A Certificate of mailing.

Gift Certificates:

- Four door-prize gift certificates were awarded.

Adjournment:

- The meeting was adjourned for the auction.

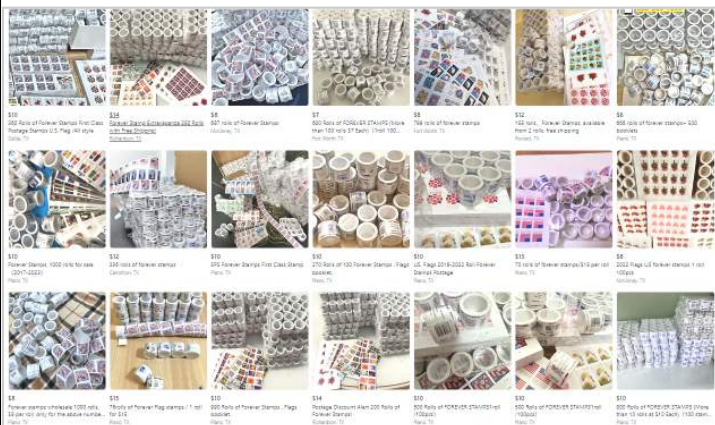
Auction:

- 40 of 70 lots were sold at the Arlington auction on September 4. Club lots sold for \$27.50, and an additional pre-auction club lot was purchased for \$20.



Never-Ending Supply

By Peter Elias



There seems to be a never-ending supply of (what surely is) counterfeit USA Forever stamps (in roll, booklet & sheetlet formats) available on Facebook Market (screenshot above was taken on September 18). Just go there and [search](#) for "Forever stamps".

All of these are sold by different people, supposedly from your area (Ft. Worth, Dallas, Richardson, Plano, Carrollton, Lewisville etc in my case). These are from various user names, many of which were registered just this year. All seem to be "in-stock", but they'll ship them (no pick-up!).

Checking one at random (top row, 2nd from left), the ad from a Pistoria Hinojos (whose profile photo doesn't look like it was taken here) says the ad is sponsored by a "Usforeverstamp", which then takes you to usfdiscounts.shop, which sports a USPS logo at the top, and a large variety of Forever stamps, all at incredible prices, such as 5 panes of Charles Schulz / Peanuts stamps from 2022 for only \$29.50 (current face is \$73.00). They weirdly also have these stamps in a booklet format, which they were never issued as!

Just an email address is listed as a contact and no phone number nor business address. Checking out another one of these sites at whois.com, poststampsusa.com, it was bought from a domain registrar called Cosmotown.com (which is out of Palo Alto, CA). That said, the listed registrant of poststampsusa.com is a "Wang Xiaoyan" with a listed address in Xiamen City, Fujian Province, China). Big surprise, huh?

CLASSIFIED BOURSE

Announcements

All club members that are current with their dues payments are entitled to FREE ads in this space! Please send ad to: Peter Elias, P.O. Box 940427, Plano, TX 75094-0427, give it to me at a meeting, or e-mail me at: peter@pcelias.com

For Sale

US POSTAGE – from our huge surplus: 1c – 20c : 70% of FV; 21c – 50c : 80% of FV. Send any amount (min \$10), specify group (70%, 80%), and receive mix of values back in FV as indicated above. Clean, F/VF only. Plate or Zip block included for every \$10 remitted. Remit (check or MO) to: J. Myers, P. O. Box 2047, Coppell, TX 75019. TX orders, add 8% sales tax. We cover return postage, S/H charges. Can also take PayPal (same terms). iasdmyers@earthlink.net 5/15

Wanted to Trade

I have general (unsorted) worldwide & used USA stamps (mostly beginning collector material) available to trade for your items such as worldwide revenue stamps & Framas. Contact Peter Elias at peter@pcelias.com 9/16

Wanted

Postally used “ATM” stamps (i.e.: machine vended), such as Framas, from around the world; would prefer on cover or postcard if possible. Contact Peter Elias at info@stvincentstamps.com 8/14

TSDA Bourse - August 27

By Peter Elias

According to Tom Cunningham, there was total attendance of 180 (114 on 8/27 & 66 on 8/28), with over 90 by just 1 PM on 8/27. Best Friday attendance in a long time!



Photo Credit:
Peter Elias

For Sale

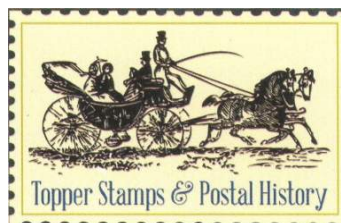
I now have a new website in which I have listed all my used **duplicates (many thousands)**. They are arranged in Scott number sequence within country. Do take a look, and select any that you want. I charge 1/3 catalogue value, post paid. The URL is www.kenwills.net Contact me at wills@airmail.net. Happy hunting! 3/19

Philatelic Reference CD's. The following self-running, philatelic reference CD's, each containing hundreds of scans, are now available:

- [APC Conversions 2012-2014](#) (NY2016 Vermeil Award!)
- [Usage of British Empire War Tax Issues](#) (exhibit)
- [Airport Philately](#) (800+ scans of Airports on Stamps)
- [4 Rings—The History of Audi](#) (Great for any car lover!)
- [St. Vincent Philatelic Reference Scans](#) (1,700 items!!)
- [St. Vincent Postcards](#) (300+ postcards from 1900 to 2007)
- [Vintage Swiss Postcards 1898-1959](#) (900+ postcards !!)

Special MCSC Member price is only \$ 6.95 each (Regular price is \$14.95 to \$19.95).. Contact peter@pcelias.com 7/23

MOVED, BUT SALE CONTINUES! Special discounts to MCSC members for Swiss, Austria, Liechtenstein issues, 25% and LESS of catalog values. All orders postpaid! I also accept PayPal if you wish! John Barrett, Ph.D. Contact info: jstrubel-boy@aol.com 12/14



Jonathan Topper

13100 Wortham Center Drive
Suite 300
Houston, TX 77065
832.518.6558

jonathan@topperstamps.com

www.topperstamps.com

Flower Mound Meeting Minutes September 18, 2024

By Janet Moyer

Call-To-Order:

- Stanley Christmas called the meeting to order 7:30 PM.

Attendance:

- 14 members were present and no guests.

Officer Reports:

- No President's report was available.
- No Treasurer's report was available.
- Secretary's Report – Janet Moyer announced the minutes were published in the newsletter. We have 101 members.

Other reports:

- EXPO Report – Stan Christmas will mail out 218 fliers and send 650 by email. The club member will receive them by email.
 - The dealers list will close Sept. 19.
- Newsletter Report – Peter Elias said the newsletter was ready to go.
- Rick Howell announced Facebook is doing well.
- Skip Ely brought the APS books and there are also club books.

Announcements:

- The Arlington club picnic will be October 2. Please come and bring a side dish or desert. Hot dogs, buns and drinks will be furnished by the club.
- The Granbury auction will be delayed until October 22 which is also their picnic.
- Peter Elias announced there will be a temporary USPS rate change for packages from October 6 - January 19.

Discussion:

- A general discussion was held about the dealers at EXPO and how the stamp collectors shop.

Show & Tell:

- Stanley Christmas brought an envelope with where one 4½¢ postage stamp from the TSDA show paid the rate.
- Randy Blackburn showed some envelopes that were very small and family related.
- Skip Ely showed some covers from donations that have gold foil stamps from the Smithsonian.
- Dan Golden showed some first day covers that he designed himself.
- Peter Elias showed:
 - An envelope bag from Canada containing mostly older Swiss Postcards
 - 2 Certificates of Mailing that used all 5¢ & all 6¢ stamps to pay for the fee (and said you can't do this with 3¢ or 4¢ stamps any longer)
 - First day envelopes where the glue seeped through.
 - APS & MCSC "Extreme Philately" Articles with two pictures- one focused and one blurry – the new way!
 - A bulletin from the Meter Stamp Society Fall Bulletin part 1 with a whopping 60 pages!
 - Pictures from Facebook of fake Forever stamps for sale.
 - A bad printing of the inverted Jenny stamp.

Door Prizes:

- 3 certificates were rewarded to Tom Turner, Peter Elias & Donna Howell.

Adjournments:

- The meeting was adjourned at 8:29 PM.

Handle Carefully

By Peter Elias

Many countries try to find ways to keep people from reusing stamps if they happen to not get cancelled.



Actual size

A couple of days ago I was soaking off some modern Australia, and ruined one of them, but not a similar one, shown to the left.

This stamp was issued in 2023 and has die-cutting, so more than likely, it was self-adhesive.

While for many countries, their self-adhesive stamps can be soaked off (unlike here in the USA), they don't necessarily float free of the envelope paper, and thus require a bit of extra effort. This usually means you have to carefully try to separate / peel the stamp off the envelope paper while soaking. This is usually not a major problem, but as I



was attempting to remove the first stamp, it started to tear at the corner!

Only after I successfully managed to soak the 2nd stamp, did I clearly see that there are 8 different sets of

"slits" in the stamp paper, 4 vertical ones in the middle, and 4 "V"-shaped ones in the corners! It also shows that some of the ink used in the machine cancel on the front seeped through the stamp paper.

In any case, it is getting more & more difficult to collect properly postally used stamps off-paper. Which is why I stopped collecting used USA over a decade ago, it's just not worth the hassle trying to soak stamps off. I guess the Postal Services really just want us to buy mint stamps and not use them, and there are too many instances of stamps being re-used.

Of course, Australia isn't the only country putting extra die-cutting lines inside of the stamp design area. Great Britain has been putting "pill shaped" die-cuts into their recent definitive stamps as well, such as shown here on the £2.20 King Charles stamp. With the naked eye, and looking at the stamp straight on, those die-cuts are sometimes hard to see. However, at an angle with light from the background, they are easier to see (such as the photo below shows vs. the scan at left).



*Do these soak off?
I won't even try!*

Swiss Railway Train Conductor

By Peter Elias



Shown is Switzerland #751, issued in 1985 to commemorate 100 years of the ZPV-SEV.

So the ZPV part of ZPV-SEV refers to the “Gewerkschaft des Verkehrspersonals”; (“Union of Transportation Workers”); SEV stood originally for “Schweizer Eisenbahnerverband” (Swiss Railway Workers Association). Glad to get that out of the way!

What first caught my eye were the hat and the ticket punch shown on the stamp, since I am well familiar with them.

The ticket punch on the stamp's upper right corner is a bit unusual looking (compared to the hole puncher that I had when I was a newspaper boy). The tickets, which were made of thick cardboard, such as the one on the right, were slid into the (vertical) slot seen at top, then punched. The punch also contained a number, in this case “75” (upside down below the top hole) and “00” (to the right of the bottom hole). This allowed them to see which conductor punched the ticket!



The picture at bottom left shows a railway employee; this was not the SBB (Swiss Federal Railway), but a regional line, the RhB (Rhaetische Bahn). The Rhaetian Railway serves the more mountainous areas of the Grisons Canton and has 385 km (239 miles) of track.

You can see that the train station employee (on the picture at bottom left) wore a black cap with a band on it, similar to the one shown on the stamp.

In 1975, when this picture was taken, we were on vacation in Davos. I can't be 100% positive, but the picture looks like it was taken at the Langwies train station. When we did a particular hike, we ended up in Langwies and took the train back to Davos Dorf via Chur & Klosters). This train originates in Arosa, further up the valley and goes to Chur, where you switch to another train that takes up the other valley to Davos, hence also the 2 punches in the ticket! The map of the RhB system can be found at this [link](#).

Depending on the time of day, the train ride (with the change-over stop in Chur) can take about 2½ to 3 hours! But that's ok. The scenery is beautiful and you can actually enjoy it, something that is hard to do as a car driver on the same route.



Photo by Hans Elias

So that left me to search for a picture of an actual Swiss train conductor. With the 1,200 or so photos & slides that my parents took, plus my own, I could not find any such photos. But then I remembered that back in 1981 (when I was in college at MSU), I had bought an old Nikon silent Super8 film camera and had taken that with me to Switzerland during that trip.

Reviewing the 1981 footage (which I had converted to video many years ago), there was a couple of seconds where I had shot the interior of the train, and there was the conductor attending to some other passengers. He's essentially wearing the same hat, but I can't seem him punching any tickets. Sadly, I can't find the tickets from this particular trip. Also interesting to note is that this particular train car had wooden seats (whereas the earlier 1975 train at left had more comfy padded vinyl seats). Shown at bottom left of the photo is my German cousin.

And guess what? The 1981 train in the film clip is on the same route (Arosa to Chur) as on the ticket from 1975. Go figure!

FDC Problems

By Peter Elias

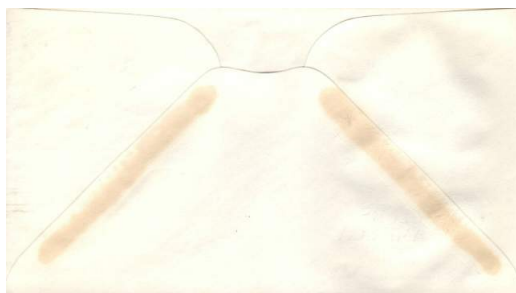
It seems that older USA FDC's, even from major companies are starting to experience some issues that will affect their value & salability (or lack thereof).

At right is a typical older FDC from 1960.

While NOT having someone's name & address on it helps, and while the envelope paper is basically ok (although it is slightly yellowing), the real problem is the glue that was used to hold the envelope itself together.

If the envelope had a stiffer in it, then you wouldn't see this from the front, but looks even worse on the back as shown above.

So basically, no stamp dealer will ever buy these, and given the overall quality, they are even difficult to give away. Could they have known in 1960 that the glue would do this after 64 years?



Unique Swiss Stamp Surcharge

By Peter Elias



Many countries have found that when new postage rates come into effect, they have leftover stamps with a now obsolete denomination.

One way to solve this is to surcharge existing stamps with the new value, which is

cheaper than printing entire new issues.

Most of the surcharges I've seen, such as St. Vincent #3243, which is a surcharged version of #290, downgrades the original 25¢ bird stamp to a 10¢ value.

Switzerland has needed to do something similar, but instead of a solid color to block out the old value of CHF0.85, they printed what looks like a hand drawn "scribble" over the denomination and then printed the new CHF1.00 denomination underneath. Even the EAN barcode on the back was corrected in a similar fashion!



Mid-Cities Stamp Club Officers & Board of Directors Election for 2025 - 2026 Ballot

Member Name: _____

Member Nr: _____

(Please complete each section of the ballot as noted with an ink pen.)

All ballots MUST be received by hand or by mail before the MCSC Annual Meeting on November 6, 2024 by the club Secretary, Janet Moyer. Please drop the ballot off at the October 2 Arlington meeting if possible or before the Annual Meeting in Arlington on November 6 in person; if mailing, send this ballot to arrive before November 6, 2024 to:

Janet Moyer, Secretary, Mid-Cities Stamp Club, P.O. Box 820784, N. Richland Hills, TX 76182-0784

1. OFFICERS

(Check one name for each position below)

<u>Office</u>	<u>Nominees</u>
President	<input type="checkbox"/> Rick Howell
1st Vice President (Arlington)	<input type="checkbox"/> Rich Hildebrandt
2nd Vice President (Granbury)	<input type="checkbox"/> Dave Stockbridge
3rd Vice President (Flower Mound)	<input type="checkbox"/> Dan Golden
Secretary	<input type="checkbox"/> Janet Moyer
Treasurer	<input type="checkbox"/> Tom Cunningham



MEET & EAT for

October 2024

by Judy & Stanley Christmas

"Meet & Eats" are held before our club meetings. All club members and their guests are welcome. We will gather at 5:00 PM and start ordering at that time. However, latecomers can order when they arrive or just come by for a visit. Meals should be over around 6:15 to 6:30 PM with the Arlington new meeting start time now being at 7:00 PM rather than 7:30 PM.

Meet & Eat locations will be included the club's broadcast messages. NOTE: All locations are subject to change.

ARLINGTON

October 2 Club Picnic, Bob Duncan Center

FLOWER MOUND

October 16 Cotton Patch
6101 Long Prairie Rd Ste 712
(972-355-8780)

GRANBURY

October 22 Club Picnic, Bentwater Activities Center

Wanted to Buy

Texas Precancel Stamps. Contact Rick Howell at:
Rick.howell1@tx.rr.com

5/19

Wanted to buy or trade for: Worldwide unusual EFOs, postal counterfeits, Odd US 20th century auxiliary markings, US 1934 and 1935 Christmas Seals on and off cover and publicity material, Korean War postal history from US and other UN contingents, and any other US philatelic material with an interesting story. John Hotchner, PO Box 1125, Falls Church, VA 22041, or jmhstamp@verizon.net 2/15

Various USA Scott #C2 & C3 on covers & cards are needed for my U.S Air Mail collection. Please forward scans of the covers / cards along with asking price(s) to Don Jones at adjaams@aol.com Thank you. 2/21

For Sale

FREE 111-page (all varieties) or 26-page album (basic version) of Spanish ATM stamps (provided as a PDF file) with purchase of at least \$3.00 in Spanish ATM stamps (which are only 15¢ each!) Contact Peter Elias at peter@pcelias.com 4/24

United States Booklets, large selection of unexploded booklets for sale at just above face value. Starting with booklet #BK104 to #BK259. Identify booklet number desired and send an email to Dave Stockbridge at stockdave44@yahoo.com.

Dave will send you a price, if booklet is available and payment instructions. 4/23

*Mid-Cities Stamp Club "Stamping Around" Newsletter
c/o Peter Elias
PO Box 940427
Plano, TX 75094-0427*

Don't Forget:
Club Picnics in Arlington - Oct. 2
& Granbury - Oct. 22
Dallas Postcard Show - Oct. 11 & 12
EXPO Planning Meeting - Oct. 19

2024 Mid-Cities Stamp Club EXPO

37th Annual Exhibition & Bourse

November 8 & 9, 2024

Friday: 10 a.m. to 5 p.m. Saturday: 9 a.m. to 4 p.m.

Grapevine Convention Center

1209 S. Main St., Grapevine, Texas 76051

25 Dealer Bourse

EXPO theme... "America From Sea to Shining Sea"

Plus

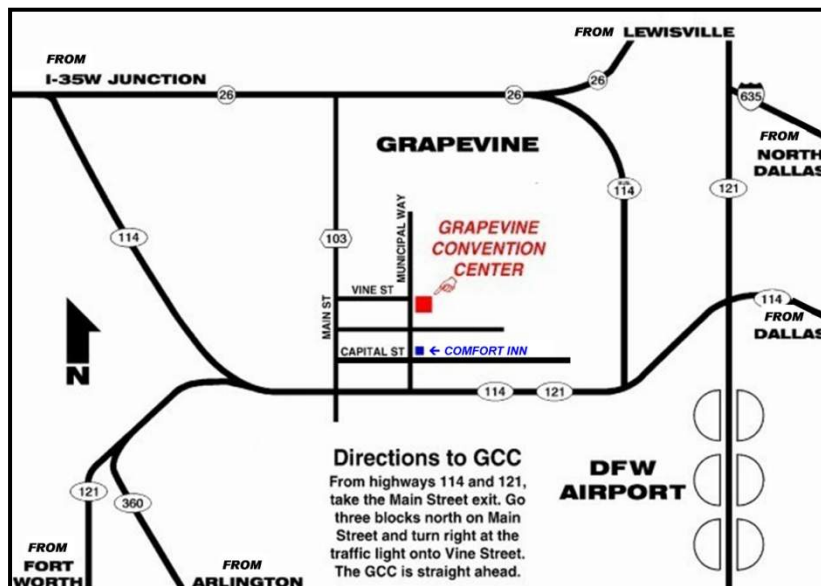
Beginning Collectors Center

Chance Board

Giant Mixture Pick

Silent Auction

Free Admission Free Parking



The Comfort Inn, Grapevine, TX offers a special rate of \$89 per night, plus tax for up to four persons. To make reservations please call (817) 329-9300 and ask for the Mid-Cities Stamp Show Room Rate.

Sponsored by the Mid-Cities Stamp Club

PO Box 820784, North Richland Hills, TX 76182-0784

www.mid-citiesstampclub.com

For additional Information contact: Ralph Poore at (817) 235-8472

Dear Fellow Stamp Collector,

You are cordially invited to attend the 2024 Mid-Cities Stamp Club (MCSC) EXPO on November 8th and 9th at the Grapevine Convention Center, 1209 South Main Street, in Grapevine, Texas. In addition to our outstanding 25-dealer bourse...

- A **SILENT AUCTION** where around 100 items will be offered for bidding on. There also will be a Buy-It-Now feature.
- The ever-popular **GIANT MIXTURE PICK** will have three tables full of stamps ... most on paper. U.S. stamps are 6¢ each for the first 19 and then 5¢ apiece for 20 or more. Foreign stamps are 8¢ each up to 199 stamps, 7¢ for 200 to 399 stamps, 6¢ for 400 to 499 stamps and 5¢ each for 500 or more stamps.
- The exciting **CHANCE BOARD**, where you can try your luck at winning all sorts of philatelic prizes for six (6) envelopes for a \$1.
- A **BEGINNING COLLECTORS CENTER**, which features economical starting aids for the new or beginning collectors such as stamps, supplies, albums, magazines and advice.
- **Exhibits** - Four frames (~64 pages) of mini-exhibits.

SCHEDULE OF EVENTS
Friday, November 8, 2024

10:00 a.m. **Exhibition Opens.**
5:00 p.m. **Exhibition closes for the day.**

Saturday, November 9, 2024

9:00 a.m. **Exhibition Opens.**
2:00 p.m. Silent Auction closes.
2:30 to 4:00 p.m. ... Silent Auction winners pay for and pick up their lots.
4:00 p.m. **Exhibition closes.**

If you have any questions, contact our show's General Chairperson, Ralph Poore, at 817-235-8472, e-mail rspoore@ralph-s-poore.com or at our club's mailing address: PO Box 820784, North Richland Hills, TX 76182-0784.

Information is also available at the club's web site www.mid-citiesstampclub.com.

Sincerely,
Ken Aldridge
President, Mid-Cities Stamp Club