

# Stamping Around

Newsletter of the Mid-Cities Stamp Club

Arlington Meetings: First Wednesday @ 7:00 p.m.

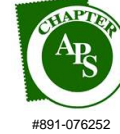
Bob Duncan Center, 2800 S. Center St.

Flower Mound Meetings: Third Wednesday @ 7:30 p.m.

3020 Corporate Ct, Ste 400 (Step Up Sports Medicine)

Lake Granbury Meetings: 4th Tuesday @ 7:00 p.m.

Bentwater Activities Center (adjacent to Bentwater Marina)



CHAPTER  
MEMBER



Volume 38, Number 3

<https://www.mid-citiesstampclub.com>

March 2025

## Can We Rely On CV?

By Kenneth Wills

I certainly use the Scott catalogue values in my trading, and offer to sell every one of my duplicate stamps at 1/3 of CV. However, I often wonder at the logic behind those values. Supposedly the principle is one of supply and demand.

Take a more recent commemorative set of 4 from a medium sized country. Scott recognizes that few collectors these days seek an individual stamp out of such a set, and so the catalog value shown is only for the full set. I suspect that this is based on the price of sets sold by the originating philatelic agency. But this makes real problems for collectors of used stamps. Scott typically assigns the same value to both mint and used set. I take the easy way out, and pro-rate the total value by the denominations to calculate CV's for individual used stamps.



This doesn't make much sense for postally used stamps, as the denominations for the standard domestic and international postage rates are used in far greater quantities than the others in the set. Supply and demand should therefore determine values based on usage. Quite frequently, low denomination stamps had little use, and are much scarcer in used condition. Occasionally, Scott recognizes this, so the 1¢, 2¢ and 3¢ stamps in the 1991 Malta definitive set are priced higher than the 5¢ and 10¢ stamps.

Scott appears to follow foreign catalogues in valuing older stamps. One example is the Queen Victoria Jubilee set of Great Britain.



It's possible to buy these (used) from dealers at around 10% of CV. Rumor has it that Stanley Gibbons led

investors to speculate on this set, gradually increasing their catalogue prices as part of this promotion. Did this influence Scott? In the early 19th century it cost one shilling to send a letter from Britain to Australia. When I visited a wholesale dealer there, he said they had masses of those stamps and couldn't get rid of them.



Then there are many stamps with CV at the minimum of 25¢ that one hardly ever sees. For example, some French semi-postal stamps (above), older Luxembourg stamps and recent used Vatican City.

**Don't Forget:  
...If you have NOT yet done so, please  
pay your 2025 Membership Dues!**

<u>Article Index</u>	<u>Page #</u>
Can We Rely On CV?	1
Editor's Forum, Calendar & Secretary's Report	2
TV Philately: Ashes In The Snow	3
Club Meeting Minutes	4
Turkey #M2	5
Been There - Done That (San Francisco Cable Cars)	5
Find Yours Stamps Value	6
Philately of the British Empire Exhibition	7
From the President's Cluttered Desk	8
News from the MCSC Sales Department	8
Philatelic Finds: An Unexpected Family Connection	9
Member & Dealer Ads	10, 11, 12
Alfa Romeo Montreal	10
Been There - Done That (Ellis Island)	11
Meet & Eat	12

# Stamping Around

## Newsletter of the Mid-Cities Stamp Club

Peter Elias, Editor ([news@mid-citiesstampclub.com](mailto:news@mid-citiesstampclub.com))

*Stamping Around* is published monthly by the Mid-Cities Stamp Club. Material in this [newsletter](#) may be reproduced in other philatelic publications if the source is acknowledged. Opinions expressed are those of the authors, and do not necessarily represent those of the Mid-Cities Stamp Club or its officers.

### 2025 - 2026 MID-CITIES STAMP CLUB OFFICERS & BOARD OF DIRECTORS:

President – Rick Howell  
Vice-President (Arlington) – Rich Hildebrandt  
Vice-President (Granbury) – Dave Stockbridge  
Vice-President (Flower Mound) - Dan Golden  
Secretary – Janet Moyer  
Treasurer – Thomas Cunningham

#### Board of Directors (voting):

Peter Elias      Ralph Poore      Ken Wills  
Immediate Past President: Ken Aldridge

Membership in the Mid-Cities Stamp Club is available to anyone of good character interested in philately. Feel free to attend any of our 3 different meeting sites in the greater Dallas / Ft. Worth area! Dues are only \$12 per year (which includes an emailed or online color newsletter, or \$22 for mailed black & white newsletters). For more information, the editor is reachable during business hours at (972) 671-0077 or : [editor@mid-citiesstampclub.com](mailto:editor@mid-citiesstampclub.com)

For a membership application write to:

**Mid-Cities Stamp Club**  
**P.O. Box 820784**  
**N. Richland Hills, TX 76182-0784**

or visit: <https://www.mid-citiesstampclub.com>



"Editor At Work"  
LEGO™ MOC by Marcos Elias

## Editor's Forum

By Peter Elias

I remember back when we mailed more newsletters, between 100 - 125 per month. Now it is about 18. So that is quite a few less than 20+ years ago. But also saves me a LOT of time, both in not having to print well over 1,000 pages each month and not having to shuffle, fold, staple & put stamps on over 100 issues.

If you are contributing articles, please submit illustrations that if they are photos, that they are digital and in the highest quality (I can scan photos, negatives and slides if needed). If the illustration is that of a stamp, cover, etc; then please "scan" the item at a minimum of 300 dpi. Do not "photograph" the item, as invariably, it will be "skewed", and I can not easily manipulate it so that all 4 sides are "squared up", invariably one or more sides will be at an angle or looked "curved", and that just doesn't look quite as good. For example in the article on page 1, the illustrations provided were "digital photos" of the stamps, not scans.

## Members in the News

By Peter Elias

Some of Peter Elias' covers with auxiliary markings (sent to foreign destinations) were shown & discussed in the 58-page book chapter by Douglas B. Quine, Ph.D., entitled "*Hiding in Plain Sight: USPS International Letter Barcodes & Auxiliary Markings*" as part of "*Considering Auxiliary Markings*", a joint publication of Philatelic Specialists Society of Canada and the Auxiliary Markings Club, published in February 2025.

## Coming Attractions

### 2025

- FEB. 25**      **MCSC — LAKE GRANBURY Meeting**  
Program: *Virtual Exhibits* by Rick Howell
- MAR. 5**      **MCSC — ARLINGTON Meeting**  
Program: *How Condition Affects the Value of Stamps* presented by Tom Cunningham
- MAR. 7 & 8**      **Greater Dallas Postcard Show**  
Holiday Inn & Suites, 3220 Craig Dr, McKinney, TX 75070  
Free parking, admission is charged. Fri. 12-6, Sat. 8-3  
Info at [www.courthousesquare.net](http://www.courthousesquare.net)
- MAR. 19**      **MCSC — FLOWER MOUND Meeting**  
Program: Extended Show & Tell and philatelic discussions
- MAR. 25**      **MCSC — LAKE GRANBURY Meeting**  
Program: *Papua New Guinea* by Ray Cartier
- MAR. 29**      **MCSC EXPO Planning Meeting 11 AM**  
David's BBQ at 2224 W. Park Row in Pantego
- APR. 2**      **MCSC — ARLINGTON Meeting**  
Program: Semi-Annual Auction
- APR. 4 - 5**      **TSDA Bourse**  
Holiday Inn & Suites, 3220 Craig Dr, McKinney, TX 75070  
Hrs: Fri 10-5, Sat 9-4; (take US 75, Exit 39A, El Dorado)
- APR. 16**      **MCSC — FLOWER MOUND Meeting**  
Program: Extended Show & Tell and philatelic discussions

## Secretary's Report

By Janet Moyer



### Applications Received:

Paul Mullholland (#681) [collects: US, birds, aircraft, ships, trains]

### New Members:

Craig Kellogg (#679) [collects US stamps]  
Kelly Kellogg (680)

### Reinstated:

n/a

### Deceased:

n/a

### Not Renewing for 2025:

n/a

### Membership Summary – February 19, 2025

Membership as of January 15, 2025	103
Applications Rec'd (counts as member next month)	1
New Members	2
Not Renewing for 2025	( 0 )
Resignations	( 0 )
Deceased	( 0 )
Reinstatements	0
Membership as of February 19, 2025	105

## TV Philately: Ashes In The Snow

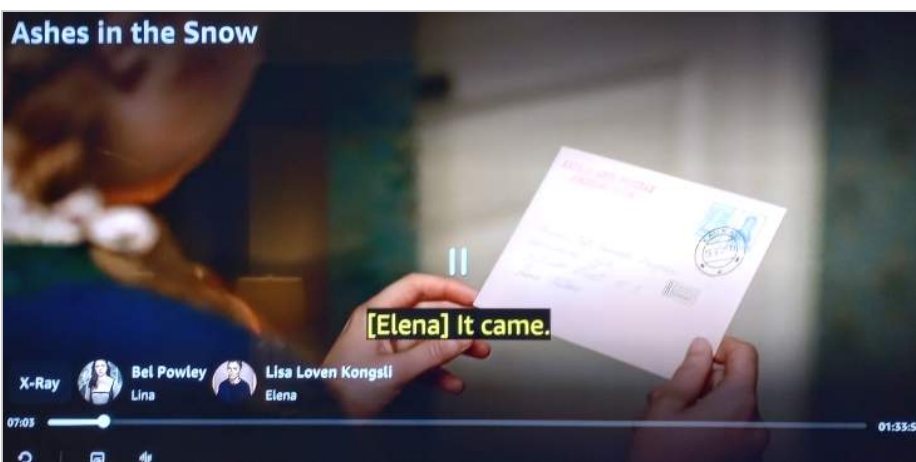
By Peter Elias

*Ashes in the Snow* is a 2018 movie filmed in Lithuania. It's a "historical drama" (i.e.: fictional drama centered around certain real events) about the deportation of Lithuanians to Siberia by the Russians in 1941.

This is the first time I have seen a movie that shows WWII from the Lithuanian perspective. The story centers around Lina, who appears to be a teenager (probably 16 - 18 years old) in the film, along with her family (including the mother, father and a younger brother).

She is shown to be artistic and in the beginning of the movie (about 7 minutes in), she is seen receiving a letter from the Kaunas Arts Program to which she had applied. I checked, and there was a Kaunas public art school from 1922 - 1940 and continued to exist under other names in the Lithuanian SSR (Soviet Socialist Republic) and in modern Lithuania. Some key information about Kaunas can be found at:

<https://datos.kvb.lt/en/periods/1940-1941/>



She wanted to open the letter together with her father, who was not home at that time. Shortly thereafter, Russian soldiers forced them (Lina, her mother Elena and her brother Jonas) from their home and deported them to Siberia, under the guise that they were "traitors".

When in Siberia through at least one winter, they were moved further north to the shores of the Laptev Sea, where it is below 32°F for 11 months of the year, and down to -24°F during the winter. Rather brutal conditions. While at the Laptev Sea area, she learns from her mother (on her deathbed) that her father had been killed before they were deported to begin with, due to him providing help (documents) so that other people could escape from Lithuania. The mother said she did not tell her and her brother so that they could keep their hopes up. Lina now opens the letter from the Arts Program and it shows that she was accepted.

Before their camp's Commandant hanged himself, he wrote a letter freeing them, and she and her brother were seen leaving the Laptev Sea area. During the end credits, the filmmakers stated that



130,000 Lithuanians were deported by the Russians, mostly to Siberia, and were forced to work in labor camps.

And now to what you see on the screen shots. The envelope shows up early in the movie, see below left.

Even though the screen shot appears in focus in the movie for the 1 or 2 seconds it is up on screen, the address can not really be discerned. There is a red registration label (fuzzy) below the two stamps.

Cropping & rotating the stamp portion, shows you this -->



It seems a bit more pixelated now, but it does show the cancel being from Kaunas (in Lithuania) and dated May ("V") 15, 1941. That would seem to be reasonably correct, as the deportations started in June. But I have no real postal history from Lithuania from that period, so I don't know how correct that postmark is.

The stamps however, are not from Lithuania, as the USSR took over Lithuania in 1940, so Russian stamps were in use at that time. Leafing through Scott's, these two stamps appear to represent #416 "Farm Worker" (in claret) and #423 "Factory Worker" (deep violet).

Both were issued around 1929, but also issued in imperforate format in 1931-1932, and again as #615 in 1940 & #618 in 1939 (and both in "claret" color, yet the stamps shown appear to be of 2 different shades). Details such as perforations are not discernible, and I don't know what the postage rate would have been for a Lithuanian domestic registered envelope back then.

What strikes me a bit odd is when you see the envelope again, 25 seconds later, from another angle. (below). There it shows the sender (upper left on envelope) to be the *Kaunas Arts Program*, yet the addressee below is ALSO the "Kaunas Arts Summer Program" and their admission office, with a street name of "Nytaut[?]o" Street (which I could not find), "18-9" [house number?] in with different handwriting, and Lina Nilkos below that. This address just doesn't make sense to me.

In any case, since this movie is only "inspired by real events", then all that matters is that the envelope "passes muster" for the 1 second or so that it is on screen, but it was still fun investigating this a bit further!

*[I saw this movie on Amazon Prime]*

## MCSC Granbury Meeting Minutes January 28, 2025

By Rick Howell

The Granbury general meeting was held at the Bentwater Activity Center on January 28<sup>th</sup>.

### Call-To-Order:

- Vice-president Dave Stockbridge called the meeting to order at 7:00 PM. We welcomed new members Craig & Kelly Kellogg.

### Attendance:

- There were 11 members and 1 guest, Paul Mulholland, present.

### Show & Tell:

- For Show & Tell, Les Barton showed a cover that was sent from Antarctica which displayed an auxiliary marking explaining the cover had been delayed for a year because of the weather. He also showed us a Wells-Fargo cover which was mailed from the USA to Hawaii in 1884.

### Announcements:

- Jim Case discussed a program called "Boy On A Stamp" which he will be presenting at the March 5<sup>th</sup> Arlington meeting.
- Gary McNamee volunteered to provide a program for the July 22<sup>nd</sup> Granbury meeting.
- Les Barton volunteered to provide a program for the August 26<sup>th</sup> Granbury meeting.
- Rick Howell discussed some of the activities happening at the APS, with emphasis on the loss of Scott English as Executive Director. Scott was instrumental in providing a rock-solid foundation for the hobby during the whole COVID situation, and we really enjoyed having him show up for many of our Zoom meetings. Scott will be missed.

### Program:

- The program for the meeting was a "Clean Out Your Closet" sale where members and guests bring items they no longer want or need to sell or trade with other members.

### Door Prizes:

- We gave away one \$10 gift certificate to Dave Stockbridge. Joe and Anne McFarland donated two bags of stamps which were given away as door prizes to Jim Case and Craig Kellogg.

### Adjournment:

- The meeting was adjourned about 8:00 PM.

## MCSC Flower Mound Meeting Minutes February 19, 2025

by Janet Moyer

Cancelled due to inclement weather (cold, windy & inhospitable as per Rick Howell & Skip Ely ..).

--> See you on March 19!

## Arlington Meeting Minutes February 5, 2025

By Janet Moyer

### Attendance:

- 20 members and 1 guest, Carol Kincaid, were present at the meeting.

### Officer Reports:

- President – No report.
- Secretary – Janet Moyer said the minutes had been published in the newsletter. There were no corrections, so they were accepted.
- Treasurer - No report.
- Newsletter – Peter Elias is working on it. He is making an index of the articles for 2024. As always, please send articles.
- EXPO – A meeting was held in January to plan EXPO 2025. The next meeting will be March 29<sup>th</sup>. Anyone interested in volunteering is welcome to come. We need you!

### Announcements:

- Dues are due, please send your payment in or let Janet know if you are not planning on renewing. Life members who wish to receive the newsletter by mail should send in \$10 to cover printing and postage.
- APS books – David has closed out the 2024 books and returned unused books to members. He has 2 new books from members on the British Commonwealth. He has put an article in the newsletter about what is new in the sales books.
- Door prizes – There will now be two \$10 door prizes at Arlington and one at each of the other locations. The number for EXPO will be determined later. They are good for one year from receipt of the door prize.
- Rick Howell still has bags of Mixture Pick stamps.
- Marty Conner belongs to two other stamp clubs that are having auctions. If interested, contact Marty.
- Peter received more donations of stamps and will give them for sorting (by Skip) for the Silent Auction, Mixture Pick, or Beginner's table.

### Show & Tell:

- Tim Sasser had the "Encyclopedia of Color" by R H White volumes 1-4 to look at. He will be bringing the others at later meetings.
- Ray Cartier had things signed by the pilot and staff of the airplane that dropped the atomic bomb.
- Peter Elias had:
  - A give-away envelope that had many stamps.
  - A photo of a humorous 16 page exhibit.
  - Revenue papers from Peru.
  - A man from Connecticut shows interesting stuff.
  - Beer coasters that are actual stamps. If you are interested in buying them, contact Peter.

### Program:

- The program was to be about virtual exhibits but the audio system wouldn't work. It will be shown at the other two locations this month and here at another time.

### Gift Certificates:

- Were won by Ray Cartier and Patty Poore.
- The meeting was then adjourned.

## Turkey #M2

By Peter Elias



So what do you do when you run across a stamp like this? The only Western Alphabet characters are “PARAS” (a currency) and “20”. Based on that and the overall design, I figured it might it “Middle Eastern” related, and a Wikipedia description showed it (“pare” or “para” -> meaning “piece”) to be the [former] currency used in the Ottoman Empire, Turkey, Egypt, Montenegro, Albania & Yugoslavia. The Ottoman law code of Egypt of 1524 established the Egyptian “medin” coin as “pare”.

That all said, which country exactly issued this? And was it actually a “postage” stamp, or perhaps a revenue stamp? Rather than dig through the Scott catalogs, I simply uploaded the image to Google, and the search showed this:

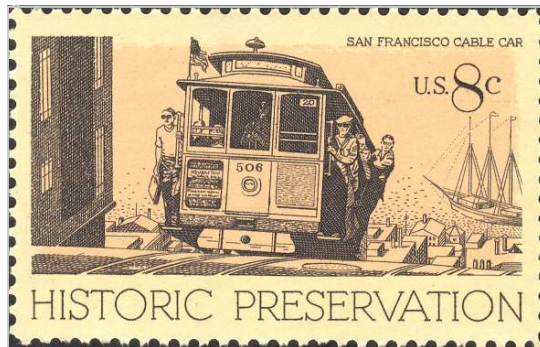


That made it easy. The upper right showed it as an eBay lot and identified as a Turkish Military stamp, #M2, from 1898, which I confirmed by quickly checking my Scott catalog. According to Scott's, it was “*Issued for Turkish occupation forces to use in Thessaly during the Greco-Turkish War of 1897-98*”. The stamp is listed as Perf. 13, with forgeries being 11½. Fortunately, mine is Perf. 13! I know there's “apps” that could identify this, but a Google picture search did the job for me.

Been There,  
Done That

## San Francisco Cable Cars

By Peter Elias



Scott #1442

According to Wikipedia, [San Francisco's cable cars](#) are the last manually operated cable cars in the world. Between 1873 and 1890, there were 23 cable cars lines established in San Francisco, of which only 3 remain (and one of those combines two older ones).

While the cable cars are used by commuters, most of the millions of passengers each year are tourists. After all, it is an experience! Whether you want to (or are still allowed to...) hang off the sides like shown in USA Scott #1442, I'll leave that up to you!

The cable cars are listed in the [National Register of Historic Places](#) and are a [National Historic Landmark](#), along with the [St. Charles Streetcar line](#) in New Orleans.

The 3 lines currently are 5.1 miles in length, and I got to ride at least one of them. I took the photo below on July 25, 1999, at the terminus of the Powell & Hyde line.



I was on a business trip to the San Francisco area, and as usual, try to see some of the local sights, especially if your boss made you spend your weekend somewhere, due to airfare being cheaper if you stayed a Saturday night back then. In this case, I left on Saturday, July 24 and the business trip part occurred on the 26th through the 28th and had visits with several prospective clients.

I was also able to check out Fisherman's Wharf and took a cruise of the bay (along with a tour of Alcatraz Island). That makes business trips so much more fun than just “airport, car rental counter, hotel, client visit”...

# Find Your Stamps Value

by Peter Elias

I'm sure that many of us would like to find out the value of our stamps. That is what stamp catalogs are for. On the other, finding your stamp's value in a catalog can also be an exercise in frustration (I'm talking to you "Scott's"...).

Some of the things you might (or will) have to know about your stamp would be:

1. Country of issuance (a bit harder if the text on the stamp is not based on a western alphabet)
2. Year of Issue
3. Watermark (no, yes, and if so, which one; Scott's doesn't always make it easy to find the illustration to go with the watermark number).
4. Color variances - if a stamp comes in different color shades, is yours "yellow green", "dark green", "deep green", "dark blue green", "deep blue green", "dull blue green" or "pale yellow green"? For example below, that could be one of several St. Vincent 6 pence (design A1) stamps with catalog numbers 1B, 3, 8, 14, 14B, 15, 21, 28, or 38 (with different combinations of perforations and either unwatermarked, or watermark #2 or #5). In used condition, the catalog values range from \$21 to \$350 and mint from \$65 to \$8,250.
5. Perforation varieties
6. Paper varieties

All of the above can make it a bit tricky to not just value the stamp, but also identify it properly to begin with (just as most people confuse St. Vincent #43 with #1, while both are "rose", different perforations and with or without watermark).



So, the above all said... I received a request to do a link exchange for <https://findyourstampsvalue.com> (hence the article title is spelled correctly...) on my own website. I decided to check out this website, which I had not heard of before; the copyright notice goes back to 2001.

I then uploaded my copy of St. Vincent #3 (shown above). While that stamp does have an apparent straight-edge on the left, it actually is (mostly blind) perforated vertically about a millimeter or so from the left edge (and only 2 holes are actually punched out). See the white arrow at the bottom.

Now, what did the site find? Great Britain #1, the Penny Black from 1840, and nothing about the St. Vincent stamp. That had me puzzled.

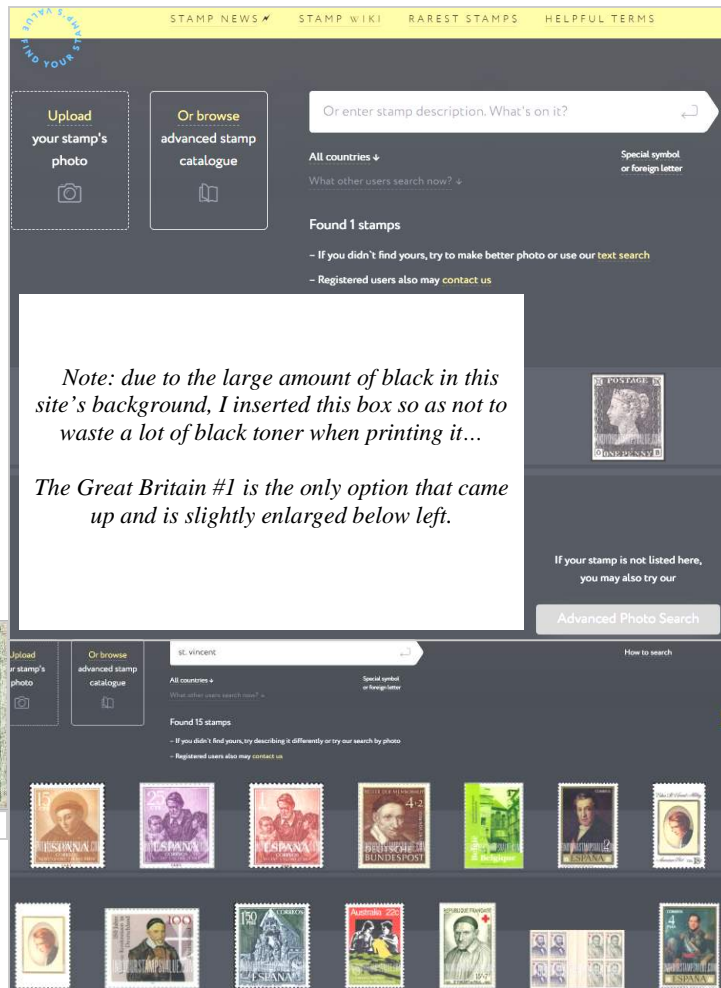
To have provided some sort of value for my stamp, it would have to identify it correctly, or at least show various stamps that have similar



appearance. See top of 2nd column for how that search result looked on their site.

I then typed in "St. Vincent" in the white entry box at the top of the webpage and got me what you see on the 2nd image in column 2: "Edna St. Vincent Millay", various "St. Vincent de Paul's", etc. Next, I tried "St. Vincent Six Pence", as that is the only text on my stamp, and the results added a few Gold Coast stamps featuring Queen Victoria, but nothing close to my stamp. The website states that they have information about all countries, but it doesn't appear that way to me.

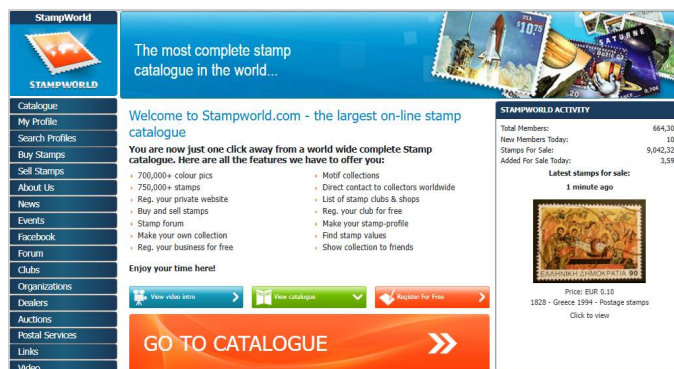
When I did click on the USA 18¢ Edna St. Vincent Millay stamp, it



did show some info about it, but the issue date, Scott Nr. and "values" for mint, used and FDC were blurred out. You would then have to subscribe to their service to see that information.

And the cost for this? According to them, there are 144,413 stamps in their system and the fees are \$5 for an individual manual stamp evaluation by an expert, \$25 per month with full access & unlimited searches (or \$150 per year).

I generally use [stampworld.com](http://stampworld.com), in conjunction with free Google image searches to find & identify stamps (since Scott's does not always show every stamp in a set...). Stampworld.com is a free website (with 664,301 members and has 750,000+ stamps that you can view.



It would appear that the number of countries that findyourstampsvalue.com has information for is somewhat limited, given that stampworld.com has 5 times as many. And even then, how does it (and any other website) deal with watermarks, color varieties, perforation & paper varieties for determining what you really have?

I won't be providing a link to the findyourstampsvalue.com site from mine, but I do for StampWorld, as I find it to be much more useful (and while yourstampsvalue.com does have some general philatelic content, is not anywhere near as much as stampworld.com).

## Philately of the British Empire Exhibition

By Geoff Owens

By 1920, the British government felt itself being challenged around the world. Other nations were rising in power and influence. The vast British Empire, upon which the sun famously never sat, was facing increasing competition and on top of that was worn down from the rigors of World War I. The populace needed morale boosting.

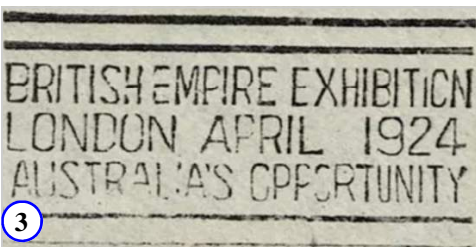


Thus was born the British Empire Exhibition, which would bring together the best of all the realms of the crown to strengthen bonds between Great Britain and her dominions and colonies, promote trade, and foster a sense of unity among His Majesty's subjects. The Exhibition was planned for 1924 (later extended to 1925), and in addition to physical preparations - including the construction of Empire Stadium, today's Wembley Stadium - a major publicity campaign was undertaken.



Not overlooked in the promotional activities were the mails. All readers are no doubt familiar with the set of stamps that was issued - the very first commemorative stamps ever issued by the British Post Office. These stamps, inscribed '1924' (Scott 185-186) are shown in Figure 1 at top. They were reissued for the second year inscribed '1925' (Scott 203-204).

As well as Britain itself, several of the dominions and colonies produced slogan cancels to promote the exhibition. An example from India from my own collection is shown in Figure 2.



Additional examples from Australia and Newfoundland

are shown in Figures 3 and 4 respectively. One of several British slogan cancels is shown in Figure 5.

Of course during the Exhibition, special postmarks were used for the benefit of stamp collectors and souvenir seekers. One is shown in Figure 6.

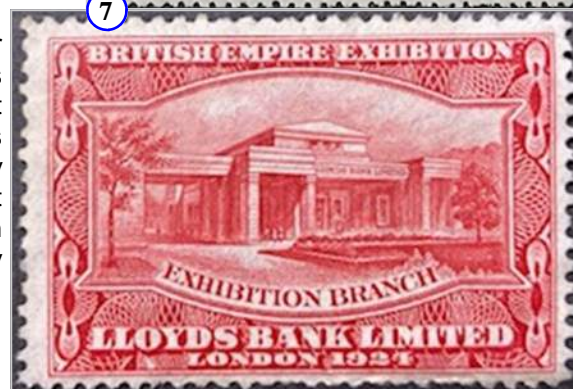


Lastly, the Exhibition was an irresistible opportunity for purveyors of all kinds to demonstrate their skills and to offer souvenirs. Among these were stamp printers. Waterlow & Sons created an attractive set of Cinderellas and Lloyd's Bank offered visitors to its pavilion a beautiful set of labels that were engraved and printed by Bradbury Wilkinson (Figure 7). Many special envelopes, postcards, and other ephemera were produced as well.

The Exhibition opened on April 23, 1924 and closed for good on October 31, 1925. At the opening ceremony King George V delivered for the first time on radio an address that was broadcast by the BBC. His son, the future George VI, painfully re-opened the Exhibition the following year; an episode that was recreated for the opening scene of the 2010 film *The King's Speech*.

Despite drawing some 27 million visitors during its run the Exhibition was not a financial success.

For collectors though, it gave us many items that we can still enjoy today.





## From The President's Cluttered Desk

By Rick Howell

Hard for me to believe that it's time for my third column as president. Time with this group seems to fly by. I guess going to three meetings a month with an occasional EXPO meeting thrown in, keeps things hopping.

Our Arlington meeting was a bit of a mix-up because we could not get the audio to work on our video presentation. That means we will have to find another time for that presentation on single page exhibits. If any of you would like to see that video, it is available online at:

<https://www.youtube.com/watch?v=AC1g8rOczNY>

If you are interested in making a one-page exhibit, please take a look at this video. It will have been presented at our meetings in Granbury and Flower Mound by the time this article will be published.

And on the subject of videos, there are a couple of videos which I think everyone would be interested in seeing. Ted Tyszka, or "Ted the Talking Stamp Collector", as he is known on YouTube interviewed our own Flower Mound Vice-President, Daniel Golden in a video which was quite good. It is great to see a young man such as Dan becoming a great proponent of our hobby. The link to that video is:

<https://www.youtube.com/watch?v=ubVSsPwvUnQ>

The remaining video which should be mentioned is the annual Maynard Sundman Lecture presented by the Smithsonian National Postal Museum. This year, the presenter was John Hotchner and he discusses his amazing career in philately as well as revealing some very interesting facts about counterfeit postage. This link is:

<https://www.youtube.com/watch?v=tKPvkRiwuVs>

And, don't forget, we have a very active presence on Facebook. Just get on Facebook and search for "[Mid-Cities Stamp Club](#)" and check us out. If you have any questions, someone on there will be happy to answer them for you, or refer you to someone who can.

Our next EXPO planning meeting will be held at David's BBQ in Arlington at 11:00 AM on March 29. Please come on out and enjoy some philatelic fellowship, some Texas barbeque, and more stamp fun. See y'all at the meeting.

## News From The MCSC Sales Department

Dave Stockbridge  
MCSC Sales Manager

We recently completed another year of Club Sales and I wish to report what is happening with your Sales Department.

During 2024 we received 11 circuits (1 each month except December) from the American Philatelic Society with approximately 175 sales books from about 15 different categories. Categories of books received are based upon members requests. APS's has nearly 300 sales categories which is occasionally listed in their monthly magazine.

Current categories being received include US classics, US 18<sup>th</sup> century covers, US Revenues, France & French Colonies, Italian Colonies, India, British Mid-East, Great Britain, Scandinavia, Luxembourg, Malaysia and a few more. If there is a category of stamps you would like to have the club receive let me know and I will request it from APS.

In 2024, MCSC club members purchased over \$1,500 worth of stamps from APS sales books. Members are charged a 10% fee for all purchases. These fees help pay the cost of mailing (\$10.85 each month), the APS buyers fee of 5% and other APS fees and insurance (\$12 monthly).

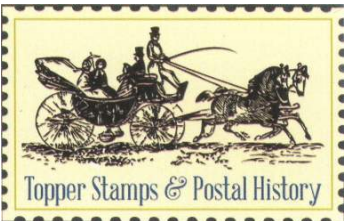
For the last 2 years, the member charge of 10% has not covered expenses for providing APS circuits. However, the Board of Directors has said that we want to continue this vital service and have agreed to cover club APS Sales expenses.

In addition to APS sales books, the club currently has 37 club sales books which were prepared and submitted by members. 27 member's sales books have just been retired and returned to their owners after 2 years of circulation.

In 2024 club members book sales totaled almost \$750. Sales book owners receive 90% of the book sales with the club charging 10% to cover expenses. If you want to put some of your duplicate or unwanted stamps in MCSC Club Sales Books, empty books can be purchased for 50¢ each.

2 newly received books contain mint, mostly never hinged, British Commonwealth stamps from 1935 to 1943. Other books recently added include 1 with older US and 5 with modern used US, where most stamps cost only 10¢ each, along with a book with Japanese and another with stamps of Norway. These books and all the other club books can be looked at any of the club meetings.

If you wish to examine a book, members are allowed to borrow club books and take them home for 1 month. I urge you to look at both the APS and Club books at our meetings. You never know what you might find to add to your collection.



13100 Wortham Center Drive  
3rd Floor Suite 45  
Houston, TX 77065  
832.518.6558

jonathan@topperstamps.com  
[www.topperstamps.com](http://www.topperstamps.com)



## Philatelic Finds: An Unexpected Family Connection

By Dan Golden

A few months ago I visited my family in Chicago for Thanksgiving. Upon the realization that CHICAGOPEX is always held the weekend before Thanksgiving, I decided to head up north a week early in an effort to see what another stamp show is like. Not to mention there is always the thrill of hunting for a fun philatelic find to add to my collection. I even managed to convince my dad to join me there since I am trying to convert him into a stamp collector. My efforts there have been a little slow going, but still he told me he had a good time learning a lot and especially loved chatting with dealers about RPO covers and railroad themed stamps.

And speaking of railroads, when I was growing up in Chicago I routinely heard throughout my childhood that I lived in the railroad capital of the world. Almost every rail line in America made its way into the city, and Chicago was in many ways the country's railroad hub that connected East, West, North and South. Sure enough there is a plethora of trains to see (and get stuck by in traffic) throughout Chicagoland. From passenger lines like Metra, Amtrak, and the "L", to your average freight train, the presence of the railroads really does seem to be everywhere in and around Chicago!

My dad has always loved trains and when I was growing up he took me with him on several steam trips and outings to model railroad shows. Thanks to him pulling some strings I've even gotten to ride in the cab of a steam engine during a photo run-by, something that made all the other rail fans present extremely jealous. My dad got his love of trains from his dad, my grandfather, who lived his whole life in Hammond, IN, only a stone's throw from Chicago. My grandfather especially liked photographing trains of every kind and his proximity to Chicago gave him ample opportunity to pursue his hobby.

He would snap photos of whatever trains were running on the Nickel Plate Road tracks near his house, develop the film into slides, and send those to his rail fan buddies around the world (in fact, when he passed away in 2008, we found a closet filled with tens of thousands of these slides that he had not gotten around to sending yet). One such railroad that commonly runs along that route is the Indiana

Harbor Belt (IHB), which just so happens to be headquartered in Hammond near where my grandfather lived (and also just so happens to run on tracks about a half mile away from my parents' house as well). As you might imagine, a large quantity of my grandfather's railroad photos depicted IHB engines or cars seeing as this is what was among the most accessible to him.

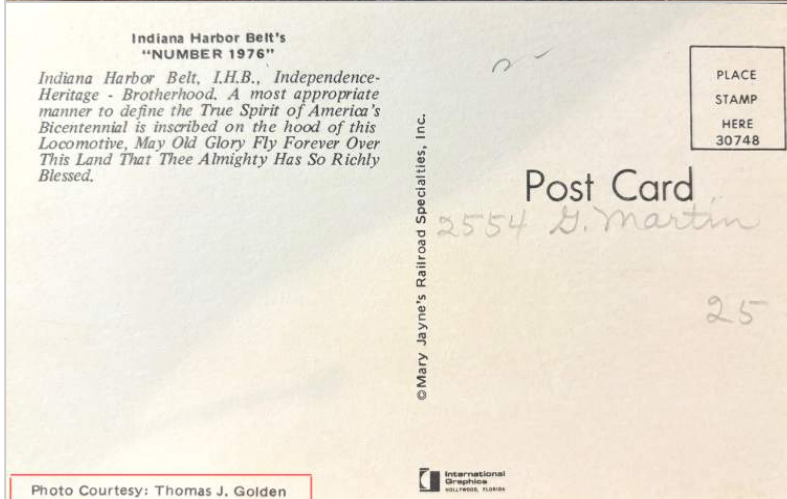
Anyway, as we were perusing the different philatelic items at CHICAGOPEX, my dad naturally gravitated toward railroad covers, RPO's, and train postcards. And it was in this final category that he made the discovery of the postcard seen here, which depicts an IHB engine in the 1970's. He excitedly called me over to join him because he wanted me to see something about it in particular.

Now over the years my dad has shown me thousands of train photos. At a certain point they begin to look the same and blend together in one's mind, so I did not think this one would be anything out of the ordinary. The engine is painted in a red, white, and blue color scheme, a very popular trend in the mid-70's that helps date this photo/postcard to around 1975-1976, when the various bicentennial celebrations were taking place around the country. But he turned the card over and told me to look at the name. So I did, and I saw a mostly blank backside of the card. There is a name, but it's hard to make out. It looks like somebody intended to send this card to a "2554 G. Martin," but decided against it for some unknown reason. Yeah Dad, I guess that's kind of neat. Whatever, I'm going to go back to looking at stamps...

But what's this? Another name (seen in the red square at the bottom

left), not written but printed. And it says: "Photo Courtesy: Thomas J. Golden". That's my grandfather's name! He was the photographer who took this photo and here it was as a postcard that I was holding in my hands!

Of course upon this discovery I absolutely had to purchase it and add it to my collection. Who knew that my grandfather's hobby would intersect with my own almost 50 years after the photo was taken? Who could have predicted that? How's that for a coincidence! This is just the latest example of how you never know what unexpected connections, rare finds, or hidden personal treasures are waiting to be discovered in the world of philately!



## Alfa Romeo Montreal

By Peter Elias



Ajman #764A from 1971 (as listed in the 1974-54 Minkus Trucial States catalog)

In 1967, at the Canadian "EXPO '67", Alfa Romeo introduced a concept car without a name, but the public decided to call it "The Montreal".

In 1970, at the Geneva car show, it was shown (with some changes) as a

production vehicle; it had a fairly small 2.6 liter V8 and a top speed of 137 mph. Since Alfa Romeo never submitted the car for emissions testing in the USA or Canada, it was thus never sold in those markets.

At [Wikipedia](#), it states that at the time, *The Montreal* cost more than a Porsche 911 or Jaguar E-type. Production ran from 1970 to 1977 and a total of 3,917 cars had been built.

While not sold officially in the USA, after 25 model years, it is possible to import these privately.

On September 7, 2024, I attended the 20th annual [ItalianCar-Fest™](#) (held at Nash Farm in Grapevine - next one is on Sept. 6, 2025). I had seen this 1971 Montreal several times here in the DFW area at various car shows, and it is definitely a cool car!

## ATA Zoom Presentations

By Peter Elias

The ATA (American Topical Association) has various Zoom presentations listed on their website that you can sign up for between March to May 2025 (and beyond). For more details and signing up, visit:

<https://www.americantopicalassn.org/events>

## Thank You!

By Peter Elias

Many thanks to Byron Sandfield of Park Cities Stamps for donating 5 boxes of various stamps, covers & albums on February 4.



Be sure to visit the Club website on the **Internet**:

← <https://www.mid-citiesstampclub.com>

For recent online newsletters see the club website above or:

<https://BetweenThePerfs.com/MCSC> →

(for older newsletters please contact the newsletter editor)



## stampsuniversal.com

Visit us at area Stamp Shows



- \* TSDA
- \* HOUPEX
- \* EXPO

US/WW Classics, Modern, SONS

Visit our new online store

@ <http://www.stampsuniversal.com>

**James D. Myers**  
P. O. Box 2047  
Coppell, TX 75019  
(972) 304-1671



Exp. 12/24

[cunninghamstamps@aol.com](mailto:cunninghamstamps@aol.com)

Exp. 12/25

(214) 546-1179

*Cunningham Philatelics*

Philatelic Consultants

Elusive Items  
Stamps and Covers

Collections  
Appraisals

**THOMAS L. CUNNINGHAM**  
APS # 082424, TSDA

P.O. Box 863237  
Plano, TX 75086-3237

Exp. 12/25

## EAS\_STAMPS

**Jimmy Tomchesson**  
Owner/Appraiser APS # 236251

2210 Crescent Water  
Rosenberg, TX 77471  
jtomchesson@yahoo.com  
832-278-5268

eBay Store: [EAS Stamps](#)

# CLASSIFIED BOURSE

## Announcements

All club members that are current with their dues payments are entitled to FREE ads in this space! Please send ad to: Peter Elias, P.O. Box 940427, Plano, TX 75094-0427, give it to me at a meeting, or e-mail me at: [peter@pcelias.com](mailto:peter@pcelias.com)

## For Sale

**US POSTAGE – from our huge surplus: 1c – 20c : 70% of FV; 21c – 50c : 80% of FV.** Send any amount (min \$10), specify group (70%, 80%), and receive mix of values back in FV as indicated above. Clean, F/VF only. Plate or Zip block included for every \$10 remitted. Remit (check or MO) to: J. Myers, P. O. Box 2047, Coppell, TX 75019. TX orders, add 8% sales tax. We cover return postage, S/H charges. Can also take PayPal (same terms). [jasdmyers@earthlink.net](mailto:jasdmyers@earthlink.net) 5/15

## Wanted to Trade

I have general (unsorted) worldwide & used USA stamps (mostly beginning collector material) available to trade for your items such as worldwide revenue stamps & Framas. Contact Peter Elias at [peter@pcelias.com](mailto:peter@pcelias.com) 9/16

## Wanted

**Postally used “ATM” stamps** (i.e.: machine vended), such as Framas, from around the world; would prefer on cover or postcard if possible. Contact Peter Elias at [info@stvincentstamps.com](mailto:info@stvincentstamps.com) 8/14

Been There,  
Done That

## Ellis Island

By Peter Elias

[Ellis Island](#) sits in New York Harbor (but is technically in New Jersey...). It is where many immigrants officially entered the USA 1892 to 1954, and almost 12 million immigrants were processed there.

According to Wikipedia, almost 40% of Americans can trace their roots back to those immigrants.

Since 1965, Ellis Island has been a part of the [Statue of Liberty National Monument](#). The Statue of Liberty itself is on a separate island about 1 mile southwest. Both have to be reached by a ferry, and you can usually buy a combo-ticket.

Given my many trips to customer sites in the New York & New Jersey areas, I finally had a chance to visit there on March 22 (or 23), 1997. The picture at right shows me in front of the Immigrant building, so I was “fresh off the boat” so-to-speak.

As most of you know, I am an immigrant myself, but we are the first people in our branch of the Elias family to have immigrated to the USA, and as such, we came by air (and did actually land nearby, at JFK Airport).

Many years ago, my mom had mentioned that while living in West Germany after WWII, that she had received “care packages” from her cousin in the USA (East Orange, NJ), but never said (or knew) much more about this. I did finally find a letter by said cousin written in the mid-1960’s (who appears to have been 20+ years older than my mom) after my grandmother’s death.

After some minor research, I found that this cousin was born in the USA of German parents, who had immigrated in the late

## For Sale

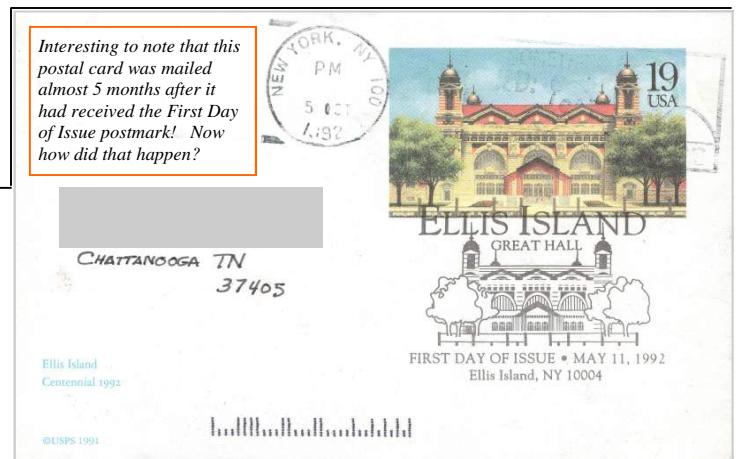
I now have a new website in which I have listed all my used **duplicates (many thousands)**. They are arranged in Scott number sequence within country. Do take a look, and select any that you want. I charge 1/3 catalogue value, post paid. The URL is [www.kenwills.net](http://www.kenwills.net) Contact me at [wills@airmail.net](mailto:wills@airmail.net). Happy hunting! 3/19

**Philatelic Reference CD’s.** The following self-running, philatelic reference CD’s, each containing hundreds of scans, are now available:

- [APC Conversions 2012-2014](#) (NY2016 Vermeil Award!)
- [Usage of British Empire War Tax Issues](#) (exhibit)
- [Airport Philately](#) (800+ scans of Airports on Stamps)
- [4 Rings—The History of Audi](#) (Great for any car lover!)
- [St. Vincent Philatelic Reference Scans](#) (1,700 items!!)
- [St. Vincent Postcards](#) (300+ postcards from 1900 to 2007)
- [Vintage Swiss Postcards 1898-1959](#) (900+ postcards !!)

Special MCSC Member price is only \$ 4.95 each (Regular price is \$14.95 to \$19.95).. Contact [peter@pcelias.com](mailto:peter@pcelias.com) 11/24

**MOVED, BUT SALE CONTINUES!** Special discounts to MCSC members for Swiss, Austria, Liechtenstein issues, 25% and LESS of catalog values. All orders postpaid! I also accept PayPal if you wish! John Barrett, Ph.D. Contact info: [jstrubel-boy@aol.com](mailto:jstrubel-boy@aol.com) 12/14



Interesting to note that this postal card was mailed almost 5 months after it had received the First Day of Issue postmark! Now how did that happen?

1890’s (from what I remember). So the cousin’s parents more than likely passed through Ellis Island!

I asked some of the few remaining people on my mom’s side of the family about this cousin, but no one had ever heard the

name before. Too bad, it would be interesting to find out more about this extended branch of our small family!





## MEET & EAT for March 2025

by Judy & Stanley Christmas

"Meet & Eats" are held before our club meetings. All club members and their guests are welcome. We will gather at 5:00 PM and start ordering at that time. However, latecomers can order when they arrive or just come by for a visit. Meals should be over around 6:15 to 6:30 PM with the Arlington new meeting start time now being at 7:00 PM rather than 7:30 PM.

Meet & Eat locations will be included the club's broadcast messages. NOTE: All locations are subject to change.

### ARLINGTON

March 5      David's BBQ  
2224 W. Park Row, Arlington  
(817) 261-9998

### FLOWER MOUND

March 19      Bari's Pizza & Pasta  
3472 Long Prairie Rd., Flower Mound  
(972) 426-2956

### GRANBURY

March 25      Grump's  
3503 E. Hwy 377, Granbury

## Wanted to Buy

Texas Precancel Stamps. Contact Rick Howell at:  
[Rick.howell1@tx.rr.com](mailto:Rick.howell1@tx.rr.com)

5/19

Wanted to buy or trade for: **Worldwide unusual EFOs, postal counterfeits.** Odd US 20th century auxiliary markings, US 1934 and 1935 Christmas Seals on and off cover and publicity material, Korean War postal history from US and other UN contingents, and any other US philatelic material with an interesting story. John Hotchner, PO Box 1125, Falls Church, VA 22041, or [jmhstamp@verizon.net](mailto:jmhstamp@verizon.net)

2/15

Various USA **Scott #C2 & C3 on covers & cards** are needed for my U.S Air Mail collection. Please forward scans of the covers / cards along with asking price(s) to Don Jones at [adjaams@aol.com](mailto:adjaams@aol.com) Thank you.

2/21

## For Sale

**FREE 111-page (all varieties) or 26-page album (basic version)** of Spanish ATM stamps (provided as a PDF file) with purchase of at least \$3.00 in Spanish ATM stamps (which are only 15¢ each)! Contact Peter Elias at [peter@pcelias.com](mailto:peter@pcelias.com)

4/24

**United States Booklets,** large selection of unexploded booklets for sale at just above face value. Starting with booklet #BK104 to #BK259. Identify booklet number desired and send an email to Dave Stockbridge at [stockdave44@yahoo.com](mailto:stockdave44@yahoo.com).

Dave will send you a price, if booklet is available and payment instructions.

4/23

*Mid-Cities Stamp Club "Stamping Around" Newsletter  
c/o Peter Elias  
PO Box 940427  
Plano, TX 75094-0427*

**Don't Forget:  
...To Pay Your 2025 Membership Dues!**