

# Stamping Around

## Newsletter of the Mid-Cities Stamp Club

Arlington Meetings: First Wednesday @ 7:00 p.m.

Bob Duncan Center, 2800 S. Center St.

Eules Meetings: Third Wednesday @ 7:30 p.m.

12750 S. Pipeline Rd, #1C (Central Station Marketing)

Lake Granbury Meetings: 4th Tuesday @ 7:00 p.m.

Bentwater Activities Center (adjacent to Bentwater Marina)



#891-076252



CHAPTER  
MEMBER

#90



#53-3364

Volume 34, Number 8

<http://www.mid-citiesstampclub.com>

August 2021

Postage Rates & Fees	1/24/21	8/29/21
<b>DOMESTIC</b>		
<b>1st Class</b> - 1 oz (retail/metered or PC)	0.55 / 0.51	0.58 / 0.53
" 2 oz	0.75 / 0.71	0.78 / 0.73
" 3 oz	0.95 / 0.91	0.98 / 0.93
" 3.5 oz (maximum)	1.15 / 1.11	1.18 / 1.13
non-machinable surcharge	+0.20	+0.30
<b>1st Class Flats</b> - 1 oz	1.00	1.16
" 2 oz	1.20	1.36
" 3 oz	1.40	1.56
" 4 oz	1.60	1.76
" 5 oz	1.80	1.96
+ 0.20 per ounce up to 13 oz (maximum)	3.40	3.56
(if rigid, non-rectangular, non-uniform, must be mailed as 1st Class Parcel)		
<b>1st Class Package</b> - up to 4 oz	4.00 - 4.45	4.00 - 4.45
" up to 8 oz	4.80 - 5.20	4.80 - 5.20
" up to 12 oz	5.50 - 5.95	5.50 - 5.95
" 13 oz (max for retail)	6.25 - 6.75	6.25 - 6.75
(Commercial base pricing is considerably less)		
<b>Media Mail</b> - 1 lb	2.89	3.19
" 2 lbs	3.45	3.82
" 3 lbs	4.01	4.45
<b>Priority Mail</b> - Flat-Rate/Legal/Padded	7.95/8.25/8.55	7.95/ 8.25/ 8.55
" - up to 1 lb.	7.70 - 16.85	7.70 - 16.85
" - Small Flat-rate Box	8.45	8.45
" - Med. /Lrg Flat-rate	15.50/21.90	15.50/ 21.90
<b>Postcard</b> (Domestic)	0.36	0.40
<b>Certificate of Mailing</b> (3817 / 3665 with 3 piece min)	1.55 / 0.44	1.65 / 0.47
<b>Certified Mail</b>	3.60	3.75
<b>USPS Tracking</b> 1st Class Parcel / Priority / Media / Parcel	0.00	0.00
<b>Insurance</b> (up to \$50 is included with Priority Mail) up to \$50 / \$100 / \$200	2.30/2.95/3.60	2.45/3.15/3.85
<b>Registered (Domestic)</b> \$0 value	12.90	13.75
\$0.01 - \$ 100 / \$100.01 - \$500	13.50 / 15.50	14.35 / 16.50
<b>INTERNATIONAL</b>		
<b>Letter &amp; Postcard Airmail</b> All Countries (1 oz) or Canada (2 oz) (variable pricing up to 3.5 oz)	1.20 see usps.com	1.30 see usps.com
<b>Non-machinable surcharge</b>	+0.21	+0.21
<b>First Class Pkg Int'l (1 to 8 oz)</b>	12.25 - 15.25	14.25 - 19.75
<b>Priority Mail Int'l Flat Rate Env(4 lbs)</b>	35.45 - 38.95	35.45 - 38.95
" Canada	28.50	28.50
<b>Priority Mail Int'l (1 pound, Grp2-20)</b>	46.95 - 50.00	46.95 - 58.30
<b>Registered Mail</b> (FCMI / FCPIS)	16.30/16.30	17.15 / 16.30

## Pending USPS Rate Increases - August 29

The USPS is scheduled to increase various postage rates on August 29. Key will be the 1st class FOREVER rate that is going from 55¢ to 58¢ for a basic 1 ounce domestic letter.

The rate table to the left shows the rate requests that the USPS has made were approved by the PRC (Postal Rate Commission) on July 19, 2021 (as per Linn's).

The rates in **green** show the rates in effect as of January 24th, while any rates shown in **red** (and italic) are the rates that the USPS is implementing as of August 29, 2021.

I have taken these rates from the pending "Notice 123" which is available from the USPS website. Shown are the most common rates that you might run across. The actual "Notice 123" is a 75-page document that also lists "commercial" rates in addition to the "retail" rates.

If by the way, you are interested in saving some money on postage, you can use the commercial rates if you go through a commercial supplier. For example, a Priority Mail flat-rate envelope that normally would cost you \$7.95 over the counter (or paid via stamps) is only \$7.40 via the commercial rate. HOWEVER, the commercial rate generally requires that you need to print the shipping label through a provider, so stamps are not allowed! These providers can be companies such as stamps.com or PayPal. Ebay as well, but you can only ship to someone you sold something to. PayPal has it available via a hidden webpage at <https://www.paypal.com/shiabel/create/>.

Article Index	Page #
Pending USPS Rates & New Rate Chart	1
Editor's Forum	2
Calendar & Secretary's Report	2
EXPO Meeting Minutes	3
TSDA Bourse	3
Club Meeting Minutes	4, 6, 11
USPS Stamp Distribution	4
Been There - Done That (Neptune Fountain )	4
Been There - Done That (Bitter Orange)	5
Been There - Done That (Buddha)	6
Been There - Done That (National Orphan Train M.)	7
Member & Dealer Ads	8, 13, 14
Comic Strip - Blondie (Foot Bath)	8
Been There - Done That (Postmarks on Bus Tickets)	9
Been There - Done That (Campus Covers)	10
From the President's Desk	11
Been There - Done That (Long Lost Relative?)	12
State Revenue Stamp Trifecta	12
Stamp Ink?	13
Meet & Eat Info	14

# Stamping Around

## Newsletter of the Mid-Cities Stamp Club

Peter Elias, Editor ([news@mid-citiesstampclub.com](mailto:news@mid-citiesstampclub.com))

*Stamping Around* is published monthly by the Mid-Cities Stamp Club. Material in this [newsletter](#) may be reproduced in other philatelic publications if the source is acknowledged. Opinions expressed are those of the authors, and do not necessarily represent those of the Mid-Cities Stamp Club or its officers.

## 2021 - 2022 MID-CITIES OFFICERS & BOARD OF DIRECTORS

President – Richard Hildebrandt  
First Vice-President – Stanley Christmas  
Second Vice-President – Rick Howell  
Secretary – Skip Ely  
Treasurer – Judy Christmas

### Board of Directors (voting):

Ken Aldridge Peter Elias Ken Wills  
Immediate Past President: Ray Cartier

Membership in the Mid-Cities Stamp Club is available to anyone of good character interested in philately. Feel free to attend any of our 3 different meeting sites in the greater Dallas / Ft. Worth area! Dues are only \$12 per year (higher for mailed newsletters). For more information, the editor is reachable during business hours at (972) 671-0077 or : [editor@mid-citiesstampclub.com](mailto:editor@mid-citiesstampclub.com)

For a membership application (standard dues are \$12) write to:

**Mid-Cities Stamp Club**  
**P.O. Box 2158**  
**Arlington, TX 76004-2158**

or visit: <http://www.mid-citiesstampclub.com>

## Coming Attractions

—> We are starting to get back in to “in-person” meetings starting in June. Data below is believed to be correct at time of publication; for updated MCSC meeting statuses, please contact club secretary Skip Ely.

### 2021

**JUL. 27 MCSC - LAKE GRANBURY In-person Mtg**  
Program: TBD  
**AUG. 4 MCSC—ARLINGTON Meeting**  
Program: Spain ATM Stamps by Peter Elias  
**AUG. 18 MCSC—EULESS Meeting**  
Program: Extended Show & Tell and philatelic discussions  
**AUG. 24 MCSC - LAKE GRANBURY In-person Mtg**  
Program: TBD  
**AUG. 21 MCSC EXPO Planning Meeting (11 AM)**  
Spring Creek BBQ, Cooper St, Arlington  
**AUG. 27 - 28 TSDA Stamp Fair (Fri 10-5, Sat 9-4)**  
Bluebonnet Room, DoubleTree Hotel, 1981 N Central Ewy, Richardson, TX 75081 (SW corner of US75 & Campbell Rd)  
**NOV. 12 & 13 MCSC - 34th Annual EXPO**  
Grapevine Convention Center  
**DEC. 10 - 11 TSDA Stamp Fair (Fri 10-5, Sat 9-4)**  
Bluebonnet Room, DoubleTree Hotel, 1981 N Central Ewy, Richardson, TX 75081 (SW corner of US75 & Campbell Rd)

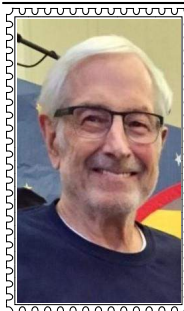


## Editor's Forum

By Peter Elias

Joining us with a “Been There...” article is member John Withers, who is chronicling his family's history through stamps, covers & postmarks!

EXPO is just around the corner, and Ray Cartier is welcoming your applications for exhibits! We will have a regular contingent of 3 APS accredited judges this year. Contact Ray as soon as possible to ensure that your exhibits will have a spot at EXPO!



## James Bailey - RIP

By Peter Elias

Member James Farris Bailey, Jr. passed away on Wednesday, July 14, 2021 at the age of 83. Jim, with his wife Sonya, lived in Brownwood, Texas since June of 1972.

He was a member of the Mid-Cities Stamp Club, American Philatelic Society, Texas Philatelic Association, Collectors of Religion on Stamps (COROS), International Society of Worldwide Stamp Collectors (ISWSC), American Topical Association, and a founding member of the Mourning Stamps & Covers Club.

There is nothing more that Jim loved than spending time with his family, but he also enjoyed his cattle, gardening, stamp collecting, books, birds, puzzles and traveling.

Visitation with family was held at Heartland Funeral Home, Sunday, July 18, 2021 from 5:00 - 7:00 PM.

Funeral services were held at Austin Avenue Church of Christ, Brownwood, Texas on Monday, July 19, 2021 at 10:00 am, burial to follow at Eastlawn Cemetery, Early Texas.



## Secretary's Report

By Skip Ely

### Applications Received

Martha Siegel (#635)  
Thompson, Bella F. (#636)

### New Members

n/a

### Deceased

Jim Bailey (\$56)

### Reinstatements

n/a

### Membership Summary – July 21, 2021

Membership as of June 26, 2021	90
Applications Received	2
New Members	0
Dropped for non-payment of dues	( 0 )
Resignations	0
Deceased	( 1 )
Reinstatements	0
Membership as of July 21, 2021	91

## MCSC EXPO Meeting Minutes Saturday, June 19, 2021

By Skip Ely

The Mid Cities Stamps Club held an Expo Planning Meeting at Spring Creek BBQ on Cooper Street in Arlington on Saturday, June 19.

### Attendees:

- Ralph Poore (Expo Chairperson), Stanley Christmas, Judy Christmas, Tom Cunningham, Katherine Story, Rick Howell, Janet Moyer, Ray Cartier, Rich Hildebrandt, Ken Wills, Ken Aldridge and Skip Ely.

### Call-To-Order:

- Ralph Poore called the meeting to order at 11:40 AM. The previous meeting minutes were approved.

### Meeting Recap:

- Ralph said he had confirmed the Comfort Inn agreement and rates for the show.
- Stanley Christmas said the show flyer was ready to be printed and would be available for distribution soon. He also showed the final version of the floor plan. A motion to accept the floor plan was made, seconded, and approved.
- Tom Cunningham summarized the dealer participation. He said we've had 37 different dealers the past two years, and that most want to come back. He detailed a few that will and a few that won't among the 26 dealers proposed for this year's EXPO.
- Stanley Christmas said he had 725 emails to be sent to prospective attendees. 600 programs will be printed. About 100 "Western Wear" stamps will be purchased for cachets, with any leftovers used as postage for various club activities.
- Janet Moyer said she would begin circulating the volunteer sheets at club meetings. She proposed using colored lanyards for name tags instead of pins and ribbons. A motion to accept was made, seconded, and approved to authorize Janet to purchase 500 lanyards with name tags.
- Ralph said we still needed an award coordinator. Janet Moyer agree to help in that role; however, we are still seeking another volunteer.
- Ray Cartier said he would be ready with the Exhibit Prospectus soon.
- Rich Hildebrandt said he will begin firming up the details for the awards banquet. It was agreed the club mini-theme exhibit award would be \$25.
- Ray also talked about his intentions to publicize EXPO at his Moon Day exhibit at the Love Field Frontiers of Flight.
- A short discussion of security needs followed. Ken Aldridge will make the necessary arrangements.
- Rick Howell talked about the packets he is putting together for the Beginners Table. He said member Scott English had provided a good number of APS perforation gauges for the effort, and that he was working on finding some inexpensive magnifying glasses. Skip Ely is looking for tongs to include, and is working on some stamp packets. Rick said the pack-

ages will also include the Hidden Objects - Stamp Collecting coloring book courtesy of member John Withers.

- Ken Wills said we had plenty of small dollar items for the Silent Auction, but that we always need some quality items to help the bottom line.

### Next Meeting:

- The next EXPO meeting was scheduled for Saturday, August 21, 11:00 A.M. at the same Spring Creek BBQ in Arlington.

### Adjournment:

- The meeting was adjourned at 12:15 PM.

## TSDA Bourse - June 25, 2021

By Peter Elias

I had completely missed (i.e.: forgot...) about the April 23-24 TSDA bourse (must be a Covid thing...). But I did manage to make it to the June edition!



Due to restrictions at the City of Richardson Civic Center, the TSDA moved their quarterly stamp dealer bourse exactly 1 mile north, to the DoubleTree Hotel at the corner of Central Expressway (US 75) and Campbell Rd (southwest corner).

It's an easy venue to get to and only about a 7 mile drive for me; the room is to the right as you enter the hotel. It is a similar size room to the one at the Civic Center (see photo above).

I came on Friday around noon, and attendance seemed ok according to Madeline Myers.

It's hard to believe that it has been something like 18 months since I was at the last TSDA bourse!

My own collecting specialties are a bit eclectic, so I usually don't end up with much, but this time I did find a couple of interesting "dollar cover" items from Topper Stamps and also Texas Stamp Center. While few are from areas I actively collect, I did find some interesting items to research further or may even become part of articles (including "been there - done that" ones...).

For me, it's about the "philatelic fun" factor. You can get quite a bit of enjoyment out of a dollar cover, basically the "thrill of the chase" of finding out more about the piece of postal history that you're looking at (why, how, who, etc). I even found a couple of "revenue" documents (receipts with postage stamps doing revenue duty)!

If you didn't make it to this event, the next one is on August 27 - 28.



## MCSC Granbury Zoom Meeting Minutes

June 22, 2021

By Eugene Atkinson

- For the first time in some sixteen months, nine members of the Lake Granbury Branch, Mid-Cities Stamp Club assembled at the Bentwater Activities Center, 1800 W. Emerald Bend Ct, for an in-person meeting.
- The 7 PM session began with **SHOW & TELL**, with members recalling how they occupied themselves during the COVID-19 pandemic. Most said they worked on accumulations of stamps, spent time at the computer, and used drive-through meal services.
- Stanley Christmas continued to work on his specialized collection of 4 1/2 cent "Prexies," now numbering in the many hundreds.
- Fred Ekenstam found an old letter from a Swedish exchange student on an assignment in Kosovo.
- Denny Ludlow located a 1982 post card with a montage illustration made from postage stamps.
- Host David Stockbridge weathered health issues and worked on family genealogy.
- For current **ANNOUNCEMENTS**, members were informed that the Arlington and Euless branches would meet over the next two to three weeks and that EXPO was on track for November.
- Stanley Christmas outlined preparations for EXPO and called for volunteers to assist in the November 12-13 event.
- Dave Stockbridge detailed club programs for the remainder of 2021 and asked members to donate items to the club "Mystery Box," to be auctioned at the EXPO.
- With no formal **PROGRAM**, members broke for refreshments and to sell or swap items they brought to "Clean Out The Closet."
- In **CLOSING**, door prizes of club certificates went to Rick Howell, Fred Ekenstam, Joe McFarland and Denny Ludlow.

My

### USPS Stamp Distribution

By Peter Elias



...worth

It used to be that post offices automatically received copies of new stamps as they were issued (although not always available on the first day of sale or issue).

Many times I would ask for a new issue on the day it came out, and roughly half the time it wasn't available simply because the person getting them to the clerks wasn't available (and what, no back-up staff to do that?); that simply wouldn't be acceptable in the "retail" market for products ("gosh, the person that moves items from the warehouse to the store shelves is on vacation"...).

But now it seems that the USPS is not even automatically shipping most new issues to the post offices. The post office staff is now supposed to manually order many of the stamps that they need (according to my understanding); but it seems to me that they can't be bothered to do that ... The average USPS customer isn't going to order commemorative stamps by mail, and don't even know about any new issues either (despite some posters announcing them hanging on the walls) and clerks rarely ever mention commemorative stamps since it's so much simpler to sell someone a booklet of flag stamps. They issue a bunch stamps, many of which will never sell out and then are withdrawn from sale and destroyed. I mean, what's the point?

*Been There,  
Done That*

## Neptune Fountain

By Pat & Bob Weidman

Neptune, the god of the sea in Roman mythology was the son of Saturn and Ops (called Cronus and Rhea by the Greeks). He is the counterpart to the Greek god Poseidon and had power over the sea and seafaring. The Roman sailors would pray to Neptune for safe voyages.

In addition, he was also the Roman god of earthquakes and horses. I wonder, since he had all of that responsibility if collected three salaries since had three different jobs. Artists would usually portray him carrying a trident, which is a three-pronged spear.

One of the places that we visited on our vacation to Italy back in 2013 was Florence. The photos of the fountain by Bartolomeo Ammannati (1511-1592) in the pictures below was taken during our visit. In the first picture below, Pat is standing in front of the fountain and waving. The second picture shows the fountain all of the Neptune statue.

The stamp is Italy, Scott #1859 and was issued on February 6, 1992.

*[Editor note: the stamp shows some color mis-registration of the black color (statue outline, and "Italy" and "750")]*





## Bitter Orange

By Peter Elias

I found these two stamps from Cyprus, Scott #1233-1234, which are part of a set of 3 issued in 2015 that features “preserved fruits”.

The two stamps feature “bitter orange” (and the third one, which is actually irrelevant to this article is “cherries”).

At first, I couldn’t make out what these stamps depicted, until I read the sideways text on the right side (“bitter orange”). Even then, it’s not how I remember “bitter orange”. On the stamps, they are apparently depicted as being “preserved fruits”, however, I remember them being the flavor of a soft drink that I grew up with in Switzerland, called “bitter orange”.

Specifically, this was a Quinine-based (aka: “tonic water”) soft drink that had a bitter orange flavor (it was also sold with a “bitter lemon” flavor). For some reason, I had always liked that flavor in that particular soft drink, which I had I bought at Migros, my favorite grocery store chain.

I was told at some point, that Quinine was used to treat Malaria, although that was hardly a concern when living in Switzerland and the amount of Quinine in a soft drink would hardly help... Quinine can have some serious side effects including developing a blood disorder; other symptoms include digestive upsets, headaches, ringing in the ears, skin rash and others. Luckily I don’t think I drank more than one small 3 dl (= 10 fl. Oz) bottle every month or two.

But up until right now, I didn’t really know much about “bitter orange”, so I had to visit my “go-to” website for this, which is of course “Wikipedia”. The webpage at [https://en.wikipedia.org/wiki/Bitter\\_orange](https://en.wikipedia.org/wiki/Bitter_orange) lists various information about bitter oranges, and has another 31 links to additional external sources.

Needless to say, there’s a whole lot of uses for bitter oranges than just in a soft drink, ranging from being used in “duck l’orange”, marmalade, orange-flavored liqueurs, salad dressings, herbal stimulants, and more. In Cyprus, it is used for “spoon sweets” and the tree is used as ornamentation. In the Americas (Nicaragua, Cuba, Dominican Republic & Haiti), it is used as a marinade for meat.

Unfortunately, I have no picture of me with the bitter orange soda from Switzerland. I was researching current availability of this product, but it doesn’t appear to be sold any longer, although it appears that they still have a “bitter lemon” flavor soda.

Despite my love for “bitter orange” tonic water, when I’m in Switzerland, the soft drink that I actively look for is “Rivella™”, a soft drink made from milk whey (yes,

you read that correctly...) that was developed in Switzerland in 1952 and is now seen as “Switzerland’s National Beverage”. I happen to like Rivella “Blue” (the low calorie version).

While a carbonated soft drink containing 35% milk whey may not sound that inviting to people here in the USA, I love it! But let me tell you something: after moving to the USA, and I was introduced to “root beer” for the first time, I almost threw up. How can anyone stand that horrible taste? 50 years later I still can not stand root beer! You might feel the same whey (pun intended) about a soft drink containing milk whey, but you’d have to try it at least once (as I did with root beer...) before judging it. So, next time you go to Switzerland (or certain other countries where it is sold, such as the Netherlands), give Rivella a try (there are 8 different varieties in Switzerland and 3 in the Netherlands).



I even got my son to like Rivella during our trip to Switzerland in 2013, and I do happen to have a picture of that (see above)!

If I could import a pallet of Rivella Blue, I probably would! Well, I shudder to think of the cost, plus I don’t know what the shelf-life of is...

For more info about this unique soft drink, see: <https://www.wikiwand.com/en/Rivella>.

And as always, stamps have brought back yet some more fond memories for me! What “fruit on stamps” brings back memories for you?

## MCSC Arlington Meeting Minutes July 7, 2021

By Skip Ely

### Call-To-Order:

- First Vice President Stanley Christmas opened the meeting at 7:04 PM.

### Attendance:

- 26 members and 2 guests attended the July meeting.

### Officer Reports:

- Treasury – There was no treasury report in the absence of the treasurer.
- Secretary – Skip Ely said our membership stood at 91 after the admittance of a new member, who was present and introduced.

### Committee Reports:

- EXPO:
  - Ralph Poore said we had a productive EXPO meeting on June 19.
  - Stanley Christmas said Tom Cunningham had reported that we had 24 dealers committed to EXPO, and he expected to fill the remaining two slots.
  - Janet Moyer began circulating the volunteer sheet.
  - Ray Cartier invited exhibits.
  - Ken Aldridge said he had confirmed our regular security details.
- Sales - Skip Ely said APS sales had been good.

### Announcements:

- Ray Cartier said he had put applications for membership in the APS and ATA on the table in the back, and encouraged non-members to consider joining those organizations. He also mentioned his exhibit at the Frontiers of Flight Museum at Love Field for Moon Day July 24.
- Stanley Christmas said the dealers at the TSDA Stamp Fair in Richardson were accepting MCSC gift certificates.
- Ken Aldridge showed a "Texas Stamp Quilt" his wife had made and outlined raffle plans for it.

### Show & Tell:

- Ray Cartier showed a meter mail cover without a meter.
- Dave Stockbridge showed an early Russian stamp with writing on it, and asked for help interpreting it (since he doesn't know Russian).
- Ben Termini showed a 1905 cover written in shorthand.
- Denny Ludlow passed around a commercial cover from the 1985 World Series between the St. Louis Cardinals and the Kansas City Royals.

### Gift Certificates:

- Were awarded to Marty Conner, Alliene Franklin, Dave Stockbridge, Janet Moyer, Jim Case and Jeff Jessop.

### Program:

- Our first auction in a year and half was held. About half of the 61 lots sold.

### Conclusion:

- The meeting concluded about 8:15 PM.

*Been There,  
Done That*

## Buddha

By Pat & Bob Weidman

Back in 2004, on our vacation to Asia, we took a one day side trip from Hong up to Guangzhou in the Peoples Republic of China.

One of the places the tour guide took us to visit was a Buddhist temple as seen in the pictures. There were several statues of Buddha in the temple and the surrounding buildings.

Buddha, which means *Enlightened One*, was born in Nepal near the border with India in approximately 563 BC. His name was Siddhartha Gautama and in his youth lived in luxury in his father's palace. He had a vision of a holy man and left his wife and newborn son to seek religious enlightenment. He became a wandering monk and practiced extreme self-denial. He eventually decided self-denial would not lead to enlightenment and abandoned it. He started to meditate under a tree and enlightenment came to him. Others who learned of this began calling him Buddha. He died in approximately 482 BC at the age of eighty [*Editor note: according to Wikipedia, there is no agreement amongst various historians as to his real year of death, which ranges widely*].

The stamp is People's Republic of China, Scott#2189 and was issued in 1988-1989.

For other articles relating to the same trip, see other "Been There - Done That" articles in Stamping Around issues for February 2015 (Hong Kong), March 2015 (Kamakura, Japan) and November 2020 (Byodo-In Temple).





## National Orphan Train Museum

By Ken Aldridge

On a recent trip to Nebraska for a family gathering, my wife, daughter Michelle and I stopped in Concordia, Kansas and visited the National Orphan



Train Museum. The museum is located in an old depot and has many old photos of children, foster families, testimonials by adults who came by train and

lots of statistics. A map of the US showed the number of children fostered by states. Kansas had 4,150, one of the largest numbers shown.

Between 1860 and 1920, 25 million immigrants arrived by boat through New York harbor. Many were poor, uneducated and lacked resources or means of employment. Desperate parents sent their children out on the streets shining shoes, raking manure, hawking newspapers, apples or themselves. Many



and the beginning of documented foster care in America. According to modern research, one in twelve Americans is connected to an Orphan Train Rider.

turned to thievery. Immigrants flooded the city daily, compounding crowded and disease prone living conditions.

Between 1854 and 1929, an estimated 250,000 orphaned, abandoned or homeless children were placed out during the Orphan Train Movement. Approximately 30 placing organizations

sent children from New York City and other large cities to rural communities across the USA and ten known countries.

The New York Founding Hospital prearranged placements. Through local Catholic organizations, they spread the word that the children



in New York needed new homes. Families submitted forms specifying sex, age, eye and hair color. The hospital tried to match a child with each request. Once selected, two identical tags with the child's name, birth date, name of new family, town and state they lived and a number. One tag was sewn into the child's clothes and one was mailed to the new family.

The Orphan Train Movement is one of the largest social reform relocation efforts in our nation's history





# CLASSIFIED BOURSE

## Announcements

All club members that are current with their dues payments are entitled to FREE ads in this space! Please send ad to: Peter Elias, P.O. Box 940427, Plano, TX 75094-0427, give it to me at a meeting, or e-mail me at: [peter@pcelias.com](mailto:peter@pcelias.com)

## For Sale

**US POSTAGE – from our huge surplus: 1c – 20c : 70% of FV; 21c – 50c : 80% of FV.** Send any amount (min \$10), specify group (70%, 80%), and receive mix of values back in FV as indicated above. Clean, F/VF only. Plate or Zip block included for every \$10 remitted. Remit (check or MO) to: J. Myers, P. O. Box 2047, Coppell, TX 75019. TX orders, add 8% sales tax. We cover return postage, S/H charges. Can also take PayPal (same terms). [jasdmyers@earthlink.net](mailto:jasdmyers@earthlink.net) 5/15

## Wanted to Trade

I have general (unsorted) worldwide & used USA stamps (mostly beginning collector material) available to trade for your items such as worldwide revenue stamps & Framas. Contact Peter Elias at [peter@pcelias.com](mailto:peter@pcelias.com) 9/16

## Wanted

**Postally used “ATM” stamps** (i.e.: machine vended), such as Framas, from around the world; would prefer on cover or postcard if possible. Contact Peter Elias at [info@stvincentstamps.com](mailto:info@stvincentstamps.com) 8/14

## For Sale

I now have a new website in which I have listed all my used **duplicates (many thousands)**. They are arranged in Scott number sequence within country. Do take a look, and select any that you want. I charge 1/3 catalogue value, post paid. The URL is [www.kenwills.net](http://www.kenwills.net) Contact me at [wills@airmail.net](mailto:wills@airmail.net). Happy hunting! 3/19

**Philatelic Reference CD's.** The following self-running, philatelic reference CD's, each containing hundreds of scans, are now available:

- **APC Conversions 2012-2014 (NY2016 Vermeil Award!!)**
  - **Usage of British Empire War Tax Issues** (exhibit)
  - **Airport Philately** (800+ scans of Airports on Stamps)
  - **4 Rings—The History of Audi (Great for any car lover!)**
  - **My Life on Wheels** (autobiography via USA personalized postage)
  - **St. Vincent Philatelic Reference Scans (1,700 items!!)**
  - **St. Vincent Postcards** (300+ postcards from 1900 to 2007)
  - **Vintage Swiss Postcards 1898-1959 (900+ postcards !!)**
- Special MCSC Member price is only \$ 7.95 each. Non-members -> please inquire. Contact [peter@pcelias.com](mailto:peter@pcelias.com) 1/21

**MOVED, BUT SALE CONTINUES!** Special discounts to MCSC members for Swiss, Austria, Liechtenstein issues, @ 1/3 and LESS of catalog values. Also will accept US postage (any values) @ 50% of catalog. All orders postpaid! I also accept PayPal if you wish! John Barrett, Ph.D. Contact info: [jstrubel-boy@aol.com](mailto:jstrubel-boy@aol.com) 12/14

**Canadian Collection housed in Scott Specialty Single Country Album.** Starts with Scott#18 through 1970. Mostly mint, some used. 2013 Scott catalog value is \$4,100, now reduced to \$775 OBO!. Will accept US postage at face value as part payment. Contact Dave Linn, (903) 785-7864 or at [dklgonefishing@yahoo.com](mailto:dklgonefishing@yahoo.com) 8/19

...almost been there - done that ...

## Comic Strip - Blondie (Foot Bath)

By Peter Elias

By Dean Young

### BLONDIE



This Blondie comic strip was published in the Dallas Morning News on March 27, 2021 and features the Postman asking to soak his feet in Dagwood's tub because his feet are hurting due to new shoes. While I certainly have nothing against the act of kindness featured here, I'm sure that's got to break all sorts of USPS rules...

But, I can identify with this scenario (to a degree). Back in the 1970's, I was also in the business of "delivering" (newspapers that is). And using my bicycle to trudge through thick snow in the middle of winter in Michigan did almost have me freeze my feet off due to the cold (despite wearing boots). I remember that one time, a customer had me come into their house and warm up my feet before continuing. I was able to use their fireplace (not bath tub) for that purpose, and of course I wasn't a government employee ...



## Postmarks on Bus Tickets

By Peter Elias

As I've mentioned in previous articles, in Switzerland, the PTT, now Swiss Post, transports not just mail, but also people.

Back in 1991, I was visiting with my family in Switzerland (along with some friends). One of my favorite little hikes (and it's a short one, only about 2 hours), is from the village of Soglio down to Castasegna (on the Italian border).

If you look at the map below, the tip of the arrow is where Soglio is situated.

To get to Soglio, we drove to Promontogno, where we parked our car at the post office (see picture at bottom), where we bought our tickets and then took the bus. At that time, the typical bus tickets were on pre-printed brown board stock. To indicate proper purchase, the ticket was post-marked on the back. As you can tell, it was postmarked at 10 AM on 28. August, 1991. When got on the bus, the driver punched a square hole in to mark it "used". It is a fairly short bus

ride to Soglio, only about 3.7 km (= 2.3 miles); but it is a rather fun ride with lots of switchbacks and a road that is not much wider than the bus itself (and there is oncoming



traffic!). After dropping us off in Soglio, the bus driver had to make a U-turn in the tiny village with its' extremely narrow streets (Swiss post office bus drivers have extensive training!). But now (i.e.: as of 2013), the bus no longer goes all the way into the village to before making a U-turn.

Back in 1991, there was still a post office in Soglio, which currently has a population of only 167! In 1991 we brought our own lunches to eat during our hike down to Castasegna, but when I visited again 22 years later, we had an excellent lunch in a garden setting in one of the restaurants before doing the easy hike down to Castasegna.

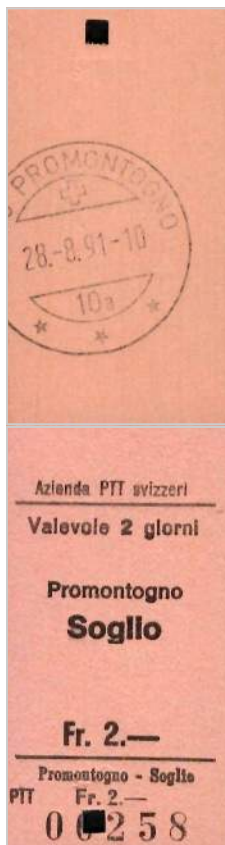
Once we reached Castasegna, we had to take another bus to get back to Promontogno, but this time we had to buy the bus ticket from the driver, which gave us the on-demand printed ticket shown below (and these don't get a postmark), but they do get ripped partially to show "usage" as shown below.



These days, they probably issue "thermally" printed tickets, which will probably fade in short order; "old style" tickets like these won't though!

Sadly, Swiss Post (as they are now called) closed the Soglio post office sometime between my visits in 1991 and 2013. I did manage to get a photo of the post office while it existed in 1991, and even a nice pictorial postmark back even further, in 1988! I wrote about that in the October 2013 issue of Stamping Around.

If you are a collector of postmarks, then having a collection of Swiss postmarks on the backs of bus tickets makes for a nice addition to your collection, and it certainly helps in illustrating stories such as this one (and it helps me bring those memories back). What do they say: *A picture is worth a thousands words, but a postmark....?*



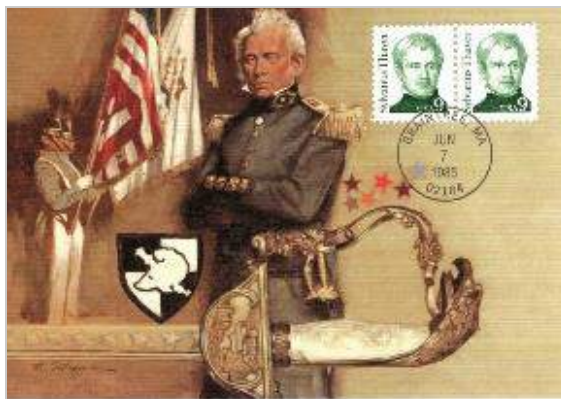
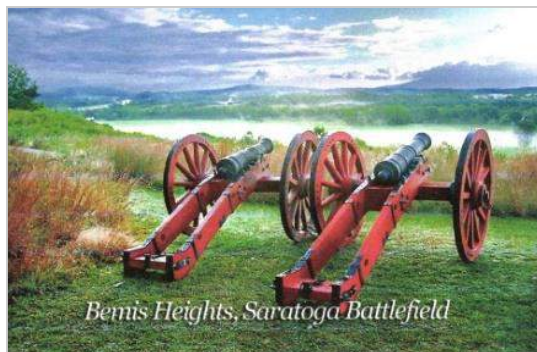


A postcard, a stamp and a special postmark gave me the idea for a new section on the "Mid-Cities Stamping Around" newsletter. My friend Andy Mitchell sent me a postcard mailed from the U.S. Military Academy (USMA) with a special postmark honoring the graduating class of 2021. The postcard pictures the Saratoga National Historical Park on New York's Hudson River. It is cancelled on 22 May 2021 with the postmark of the West Point Graduation Station honoring the USMA Class of 2021.

In addition to the postcard Andy sent a review of a new philatelic book, "Postmarked West Point", which chronicles the postal history of West Point and its graduates. Shown to the right is an image of the front and back of the postcard showing the National Park and the special postmark. A review of the new book is available [on-line](#).

My wife's uncle, Cadet Paul M Jones, graduated from West Point and participated in the last horse mounted military action by the U.S. Army. These new philatelic items brought to mind a number of West Point related philatelic items that I have collected and created over my years of collecting to chronicle our family ties to this American military academy.

Among these items are First Day Covers and First Day Cards (FDC) for the Sylvanus Thayer Stamp, West Point



Bicentennial Stamp, the Purple Heart Medal Stamp and the U S Military Academy West Point Stamp of 1937. Shown above & left are several examples of these philatelic items.



# MCSC Eules Zoom Meeting Minutes

## July 21, 2021

By Skip Ely

### Attendance:

- 8 members attended the meeting.

### Opening:

- First Vice President Stanley Christmas opened the meeting at 7:30 PM.

### Officer Reports:

- Treasury – Judy Christmas gave the approximate treasury amount.
- Secretary – Skip Ely said we have 2 new members and 1 deceased (Jim Bailey, #456).

### Committee Reports:

- EXPO:
  - Ken Wills announced he won't be able to attend Expo this year, but will be available to help with the preparation.
  - Peter Elias said he has ordered the judges bags.
  - Stanley said there would be another Expo meeting at Spring Creek BBQ August 21.
- Newsletter - Peter Elias said he needed only these minutes to complete the next newsletter.
- Sales - Skip Ely said we had good sales from the APS books this month, and some decent club book sales as well.

### Announcements:

- Peter Elias said he will be giving the August 4 program in Arlington on Spanish ATM stamps.
- Skip Ely said he had some covers from a recent donation available at the freebie table.

### Show & Tell:

- Stanley Christmas passed around a cover with fancy lettering in the addressed portion.
- Ken Wills showed a Christmas stamp that was spray cancelled, so much it was hard to see what it was. He also showed an article from the ad magazine "Living with Panache" (from July 2011 that featured Ray & Karen Cartier in an article about stamp collecting (see top of 2nd column). Ken also talked about an acquaintance from France that has been sending him his French collection.
- Skip Ely talked about identifying some Swedish definitives, and had a handout guide for anyone that wanted one.
- Peter Elias showed some state revenue stamps he had acquired recently from the SRS (State Revenue Society). He also showed a package addressed to him that was intended for someone else. He also discussed several revenue documents and various other philatelic items that he purchased at the recent (June 25-26) TSDA Stamp Fair in Richardson
- Sai Madhavapeddi showed a large envelope with attractive stamps that he received from Mauritius.
- Rick Howell showed some inexpensive but good magnifying glasses he purchased for the beginners table.
- Ken Wills finished up with a discussion of the found-

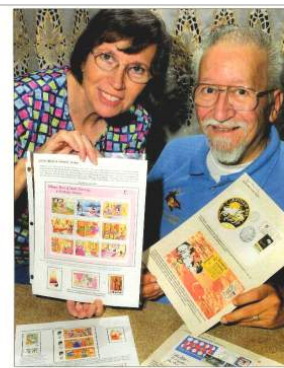
ing of the Red Cross, and showed some annual semi-postals issued by France for its benefit.

### Gift Certificates:

- Were awarded to Tom Turner, Ken Wills, Rick Howell, and Sai Madhavapeddi.

### Adjournment:

- The meeting ended around 8:30 PM.



Ray and Karen Cartier with stamps from their collection. Photo by Steve Schmidt.

**Letter perfect**  
According to Ray Cartier of Arlington, the difference between a stamp collector who just pastes stamps in a book and the philatelist is a lot of research.  
"The philatelist selects the topic, or stamp category that interests him or her, and researches the story behind each stamp. The attraction is not in its interest, but the knowledge gained," he said.  
"A survey I did found that the average age of the serious stamp collector is 63 years, and 80 percent have a college degree and 54 percent have advanced degrees."  
Ray and his wife, Karen, are active in the American Topical Association, a philatelic society.  
Ray served on the Air Force and followed the Mercury program and then worked in the procurement of General Dynamics. He collects "cancels" or envelopes commemorating space exploration, often including special wording or pictures on the left side.  
He has many autographs from astronauts and cosmonauts.  
Karen, known as "The Legend Lady," started collecting stamps on folk and fairy tales, island collecting, and topical discovery. A German Yarnal and Carol stamp while serving Ray's early stamp collection. She has written two books on island cover folk tales and legends from island to the U.S. Island glass window stamps are another interest.  
The value of a stamp is based on supply and demand, explained Ray. A limited quantity of a stamp—whether because of a flaw, mistake or limited run—increases value. Other collectible stamps include revenue stamps issued by government agencies.  
Ray is currently serving a stamp club like the Mid-Cities Stamp Club. The American Topical Association, where Ray once served as executive director, is another source.  
"Stamp collecting is a great learning tool, especially for youngsters," he said. "We have traveled and met people from all over the world. We help each other in our search for stamps."

## President's Report

By Richard Hildebrandt

I think the summer doldrums have set in. Not much energy and few new ideas. Hope all of our members are faring better than I feel.

I want to make a few comments on our club activities. First, we are really in need of programs to be presented at the Arlington meetings. Both August and September are open if anyone has something they could speak on I would be very appreciative. If that is too short a time to get a program together there are numerous meetings next year without a scheduled program. These presentations do not have to be overly long. If they run 10 to 15 minutes that is far better than me trying to use my meager philatelic knowledge to fill the time. If you have an idea for a topic you would like to see presented let me know and I will see if we have some members who could speak on it.

Secondly, EXPO is on the horizon, November 12 & 13. We plan on the full complement of activities this year, (mixture pick, silent auction, beginners table, chance board, exhibits with judging, an awards dinner, etc.)

Ray is always soliciting for new exhibits. There is still time to show off your philatelic collection and knowledge. Exhibits take many forms and sizes, so contact Ray if you are interested.

The silent auction folks are also always looking for quality items for the attendees to bid on. If you have uncovered some material that you no longer desire to retain I am sure Skip Ely, Tom Turner or Ken Wills would be glad to take it off of your hands. If you are not a regular meeting attendee, just contact one of these gentlemen and arrangements can be made to get the items.

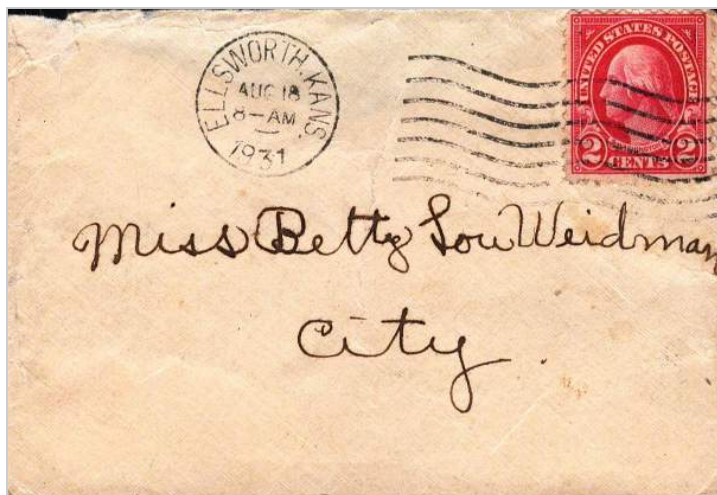
Lastly, is the quilt auction that Ken Aldrich is running for the club. There is a photo of it in the July newsletter on page 5. Unfortunately, the photo does not do it justice. It is a gorgeous piece of sewing that combines Philately with Texas. Again contact Ken with any questions you may have.

Stay cool and enjoy your stamps!

## Long Lost Relative?

By Pat & Bob Weidman

At the June 2nd meeting in Arlington, Skip Ely gave me a bag of stamps for the mixture pick. It was a donation of both foreign and U.S. stamps that he had received for the club. I always go through any donations to check for damaged stamps that I will pull out and dispose of. As I was going through the U.S. stamps, I noticed the enclosed cover. What caught my attention was who this cover was addressed to. Could this be a relative? If it is, it is someone that I am not familiar with.



My father's family, the Weidman's, are originally from Toledo, Ohio. I remember going there when I was a kid to visit my grandfather. As far as I know, he and his sister, my father's Aunt Bess, were the only Weidman's. If there were other Weidman's, it was never mentioned.

This cover is addressed to a Miss Betty Lou Weidman. Weidman, a German name, is not common, so who can this be?

There is no street address on the cover. As for a town, it just says "City". It was mailed from Ellsworth, Kansas, on August 18, 1931, so who can this be?

*[Editor's Note: After reading the above, I did a quick Google search and found the "myheritage.com" site which listed several "Betty Weidman's" around the country, even one that lived in Kansas around 1930 and also had the middle initial "L"! Whether that person is related to Bob is unknown at this time.]*

There are countless other websites with genealogical & ancestry data, but many are not free and require a subscription (although some do have a 7 or 14-day trial).

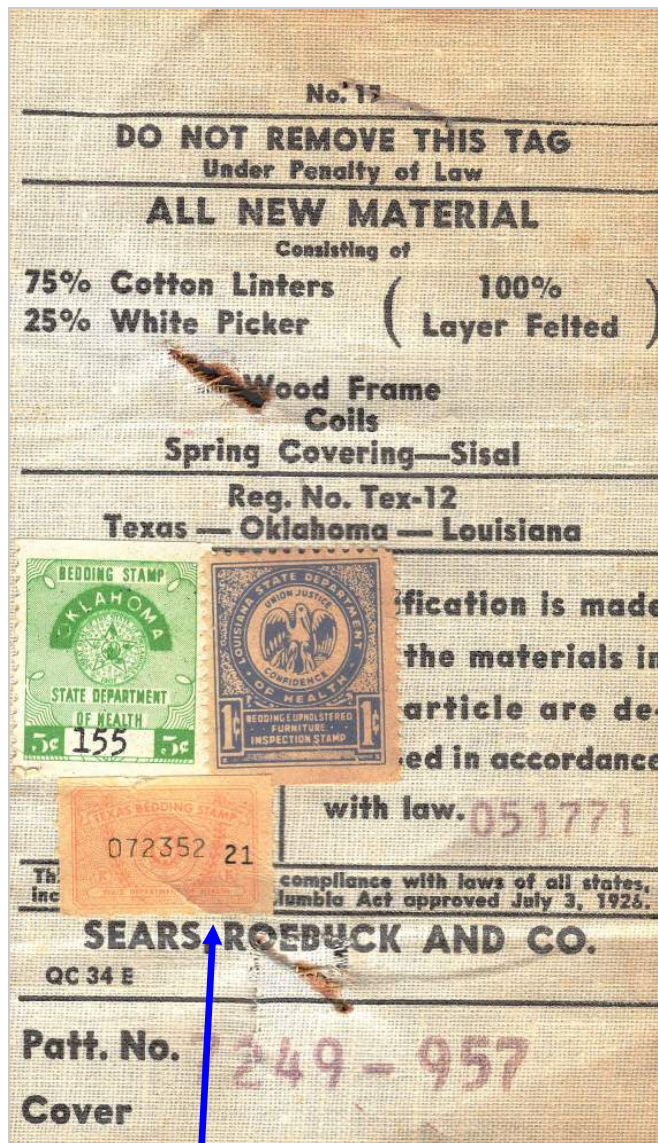
Even I have done some genealogical research, but I know for a fact that no one from the "Elias" family tree emigrated to the USA (we are the first), so all my research has to be on European (mostly German) websites. That's not to say someone in our family tree from many generations ago, say a son or daughter of a great-great-great-grandfather from the 1800's, didn't move to the USA for example ...

In any case, use the resources of the internet to help find potential relatives!

## State Revenue Stamp Trifecta

By Peter Elias

I dabble with US State Revenue stamps occasionally (I am also a member of the SRS - State Revenue Society), as these types of revenue stamps can be fascinating and there are countless types of revenue stamps from various states.



As you can see in the scan above, this "Bedding / Mattress Tag" contains three different State Revenues, for Texas, Oklahoma and Louisiana. While I've seen bedding tags before, never with 3 different states of stamps on them! But even this tag from Sears itself says it is for 3 different states. I wonder if they did that with other states that are adjoining?

In any case, according to the State Revenue Catalog, this is #BD6, the issue year is questioned, but possibly between 1978? (#BD5) and 1985? (#BD7). However, the Oklahoma stamp is #BD3 from 1955 and Louisiana is #BD1 from 1951. Thus, based on the OK & LA stamps, I'd think that the TX one would be from the 1950's as well. Guess I'll have to write to the Editor of the State Revenue Journal and write it up there as well!





## Stamp Ink?

by Peter Elias

Hardly. I saw this box of #215 Epson® inkjet cartridges at an office supply store a while back.

What I noticed immediately was that they used a collage image of various postage stamps on the box.

Upon closer inspection of the box, it appears that all stamps featured are mostly older CTO stamps from Hungary! Why those? I have no clue...

But, it is interesting for the public to just have some stamps to look at! After all, the average person rarely sees any sort of stamps in their daily lives these days!



**Estate Appraisals**

**Topper Stamps & Postal History**

**Jonathan Topper**  
10480 Grant Road  
Suite 117  
Houston, TX 77070  
832.518.6558

[jonathan@topperstamps.com](mailto:jonathan@topperstamps.com)  
[www.topperstamps.com](http://www.topperstamps.com)

Exp. 12/21



Be sure to visit the Club website on the Internet:

← <http://www.mid-citiesstampclub.com>

For recent online newsletters see

<http://BetweenThePerfs.com/MCSC> →

(for older newsletters see the club's private groups.io website)



## stampsuniversal.com

Visit us at area Stamp Shows



- \* TSDA
- \* TEXPEX
- \* HOUPEX
- \* EXPO

US/WW Classics, Modern, SONs

Visit our new online store

@ <http://www.stampsuniversal.com>

**James D. Myers**  
P. O. Box 2047  
Coppell, TX 75019  
(972) 304-1671

Exp. 12/21



[cunninghamstamps@aol.com](mailto:cunninghamstamps@aol.com)

(214) 546-1179

*Cunningham Philatelics*

Philatelic Consultants

Elusive Items  
Stamps and Covers

Collections  
Appraisals

**THOMAS L. CUNNINGHAM**  
APS # 082424, TSDA

P.O. Box 863237  
Plano, TX 75086-3237

Exp. 12/21

**OKLAHOMA  
STAMPS**

Specializing in United States Stamps  
Member APS, ASDA, NSDA

**Kirk McKenzie**  
[kirkmckenzie@cox.net](mailto:kirkmckenzie@cox.net)

1001 North Fulton  
Tulsa, Oklahoma 74115  
918-836-1681

Exp. 12/21



## MEET & EAT for

August 2021

by Judy & Stanley Christmas

"Meet & Eats" are held before our club meetings. All club members and their guests are welcome. We will gather at 5:00 PM and start ordering at that time. However, latecomers can order when they arrive or just come by for a visit. Meals should be over around 6:15 to 6:30 PM with the Arlington new meeting start time now being at 7:00 PM rather than 7:30 PM.

Meet & Eat locations will be included the club's broadcast messages. NOTE: All locations are subject to change.

--> Official Meet & Eat get-togethers prior to the club meetings are now starting to resume in-person!

### ARLINGTON

Campo Verde, 2918 W Pioneer Pkwy  
Dalworthington Gardens, TX 76013

### EULESS

Chili's, 2101 Airport Freeway  
Bedford, TX 76021 (817-545-0012).

### GRANBURY

Grumps, 3503 E. Highway 377  
Granbury, TX

## Wanted to Buy

Texas Precancel Stamps. Contact Rick Howell at  
[Rick.howell1@tx.rr.com](mailto:Rick.howell1@tx.rr.com)

5/19

Wanted to buy or trade for: Worldwide unusual EFOs, postal counterfeits. Odd US 20th century auxiliary markings, US 1934 and 1935 Christmas Seals on and off cover and publicity material, Korean War postal history from US and other UN contingents, and any other US philatelic material with an interesting story. John Hotchner, PO Box 1125, Falls Church, VA 22041, or [jmhstamp@verizon.net](mailto:jmhstamp@verizon.net) 2/15

Various USA Scott #C2 & C3 on covers & cards are needed for my U.S Air Mail collection. Please forward scans of the covers / cards along with asking price(s) to Don Jones at [adjaams@aol.com](mailto:adjaams@aol.com) Thank you. 2/21

## For Sale

I have over 10,000 auctions on delcampe.com @ 35% of Scott or less. Worldwide & US stamps, covers and FDCs. For more info contact Denny Ludlow @ (713) 898-1872 10/15

FREE 111-page (all varieties) or 26-page album (basic version) of Spanish ATM stamps (provided as a PDF file) with purchase of at least \$4.00 in Spanish ATM stamps (which are only 15¢ each!)! Contact Peter Elias at [peter@pcelias.com](mailto:peter@pcelias.com) 1/21

—> YOUR FREE AD COULD BE HERE <— !  
(for MCSC club members only)

*Mid-Cities Stamp Club "Stamping Around" Newsletter  
c/o Peter Elias  
PO Box 940427  
Plano, TX 75094-0427*

**Don't Forget:**  
**EXPO Planning Mtg - Aug 21**  
**TSDA Stamp Fair - Aug 27-28**