

Stamping Around

Newsletter of the Mid-Cities Stamp Club

Arlington Meetings: First Wednesday @ 7:00 p.m.

Bob Duncan Center, 2800 S. Center St.

Eufless Meetings: Third Wednesday @ 7:30 p.m.

12750 S. Pipeline Rd, #1C (Central Station Marketing)

Lake Granbury Meetings: 4th Tuesday @ 7:00 p.m.



#891-076252



CHAPTER
MEMBER

#90



#53-3364

Volume 35, Number 1

<http://www.mid-citiesstampclub.com>

January 2022

Postage Rates & Fees	8/29/2021	1/9/2022
DOMESTIC		
1st Class - 1 oz (retail/metered or PC)	0.58 / 0.53	0.58 / 0.53
" 2 oz	0.78 / 0.73	0.78 / 0.73
" 3 oz	0.98 / 0.93	0.98 / 0.93
" 3.5 oz (maximum)	1.18 / 1.13	1.18 / 1.13
non-machinable surcharge	+0.30	+0.30
1st Class Flats - 1 oz	1.16	1.16
" 2 oz	1.36	1.36
" 3 oz	1.56	1.56
" 4 oz	1.76	1.76
" 5 oz	1.96	1.96
+ 0.20 per ounce up to 13 oz (maximum)	3.56	3.56
(if rigid, non-rectangular, non-uniform, must be mailed as 1st Class Package)		
1st Class Package - up to 4 oz	4.00 - 4.45	4.50 - 5.00
" up to 8 oz	4.80 - 5.20	5.10 - 5.50
" up to 12 oz	5.50 - 5.95	5.80 - 6.25
" 13 oz (max for retail)	6.25 - 6.75	7.05 - 7.65
--> (Commercial base pricing is considerably less!)		
Media Mail - 1 lb	3.19	3.19
" 2 lbs	3.82	3.82
" 3 lbs	4.45	4.45
" 4 lbs	5.08	5.08
Priority Mail - Flat-Rate/Legal/Padded	7.95 / 8.25 / 8.55	8.95 / 9.25 / 9.65
" Commercial Flat-Rate/Legal/Padded Env.	7.40 / 7.70 / 8.00	7.75 / 8.05 / 8.45
" Small Flat-rate Box (Ret/Comm)	8.45 / 7.90	9.45 / 8.25
" Medium Flat-rate Box (Ret/Comm)	15.50 / 13.75	16.10 / 14.25
" Large Flat-rate Box (Ret/Comm)	21.90 / 19.30	21.50 / 19.20
Postcard (Domestic)	0.40	0.40
Certificate of Mailing (3817 / 3665 with 3 piece min)	1.65 / 0.47	1.65 / 0.47
Certified Mail	3.75	3.75
Insurance (up to \$50 is included with Priority Mail) up to \$50 / \$100 / \$200	2.45 / 3.15 / 3.85	2.45 / 3.15 / 3.85
Registered (Domestic)		
\$0 value	13.75	13.75
\$0.01 - \$ 100 / \$100.01 - \$500	14.35 / 16.50	14.35 / 16.50
INTERNATIONAL		
Letter & Postcard Airmail		
All Countries (1 oz) or Canada (2 oz) (variable pricing up to 3.5 oz)	1.30	1.30
	see usps.com	see usps.com
Non-machinable surcharge	+0.21	+0.30
First Class Pkg Int'l (1 to 8 oz)	14.25 - 19.75	14.85 - 17.85
Priority Mail Int'l Flat Rate Env(4 lbs)	35.45 - 38.95	36.85 - 42.15
" Canada	28.50	29.60
Priority Mail Int'l (1 pound, Grp2-20)	46.95 - 58.30	48.80 - 60.00
Registered Mail (FCMI / FCPIS)	17.15 / 16.30	17.15 / 17.15
See Notice123 at usps.com !		

USPS 2022 Postage Rate Increases

By Peter Elias

On the last Sunday in January is generally when many USPS rate changes take place. Last year we had mid-year change in rates on 8/29/2021, but some of these lasted only until 10/2/2021, when a temporary "Seasonal surcharge" was in effect for many parcels and packages. That surcharge will go away on 12/26/2021, and the 8/29/2021 rates will resume from 12/26/2021 through 1/8/2022, when the proposed rates (see left) will start on 1/9/2022 as supposed to start (which would be about 3 weeks earlier than usual).

On the chart to the left are the main rates that some of us normally encounter and shows the 8/29/2021 rates and the proposed 1/9/2022 rates. On the right column, if the rate is changing, I've put that rate in a **dark burgundy italic font**, if unchanged, it will remain a **light green font**. Hopefully that will make the changes more obvious, most of which are for package items

The "proposed" rates are just that. If approved by the Postal Rate Commission, they will take effect on 1/9/2022 as stated. At time of publication, the 'proposed' rates had revision dates of either 11/19/2021 or 12/03/2021. More up-to-date info is at <https://pe.usps.com/pricechange/index>.

For the first time, I've put in a couple of the "commercial base" pricing, which is far less than the "retail" rate. The big drawback to commercial base pricing is that you can NOT use postage stamps, but must use online generated postage labels.

I must say that this is the most number of postage rate changes in a short amount of time in recent history!

Article Index	Page #
USPS 2022 Postage Rate Increases	1
Editor's Forum	2
Calendar & Secretary's Report	2
Been There - Done That (Van Gogh)	3
Been There - Done That (Roberto Clemente)	4
Media Mail	4
Da Stamps That Shoulda Have Been	4
Nixie Covid-19 Cover	5
Club Meeting Minutes	6
Annual Christmas Party	6, 13
TV Philately - Finding You	7
Been There - Done That (Julierpass)	8
Grrr...	8
TV Philately - The Healer	9
2022 Membership Renewal Form	9
Member & Dealer Ads	10, 12, 14
Comic Strip - Blondie (Who Is Bernard Barnaby)	10
Inverted Jenny Envelopes	11
Been There - Done That (Tatort)	12
President's Report	13
Philatelic Firsts	13
Too Close To The Edge	13

Stamping Around

Newsletter of the Mid-Cities Stamp Club

Peter Elias, Editor (news@mid-citiesstampclub.com)

Stamping Around is published monthly by the Mid-Cities Stamp Club. Material in this [newsletter](#) may be reproduced in other philatelic publications if the source is acknowledged. Opinions expressed are those of the authors, and do not necessarily represent those of the Mid-Cities Stamp Club or its officers.

2021 - 2022 MID-CITIES STAMP CLUB OFFICERS & BOARD OF DIRECTORS:

President – Richard Hildebrandt
First Vice-President – Stanley Christmas
Second Vice-President – Rick Howell
Secretary – Skip Ely
Treasurer – Judy Christmas

Board of Directors (voting):

Ken Aldridge Peter Elias Ken Wills
Immediate Past President: Ray Cartier

Membership in the Mid-Cities Stamp Club is available to anyone of good character interested in philately. Feel free to attend any of our 3 different meeting sites in the greater Dallas / Ft. Worth area! Dues are only \$12 per year (which includes an emailed or online newsletter, or \$22 for mailed newsletters). For more information, the editor is reachable during business hours at (972) 671-0077 or : editor@mid-citiesstampclub.com

For a membership application write to:

Mid-Cities Stamp Club
P.O. Box 2158
Arlington, TX 76004-2158

or visit: <http://www.mid-citiesstampclub.com>



Editor's Forum

By Peter Elias

So what exactly does "Been There - Done That" actually mean (other than the series of articles that I and a couple of other club members have been contributing)? I googled the term and here's some of what I found:

1. *Used to express past experience of or familiarity with something, especially something now regarded as boring or unwelcome. "I've been there, done that, got the video and the T-shirt"*
2. *Let's skip this topic." Or "I already know this." It's just a rude way of ending the conversation. Blowing someone off with a "Been there, done that" statement isn't just downright rude, it's a statement that says a lot about you. ... Instead of asking me about my experience, you talk about yourself.*
3. *This phrase seems to have originated in a line of a 1979 tribute song to the Australian cricketer and [cricket](#) commentator Alan McGilvray (1909-96).*

It seems then, it is certainly a "dismissive" statement and a way of blowing someone off and not necessarily wanting to hear any details, since obviously the person had "been there - done that" him/herself and just wants to go on to the next topic. I get that, but in my case, it's just a way to have a clever title for tying in your life's experiences with a stamp, postmark or other philatelic item, as a way to illustrate that indeed you actually have "been there and done that". So let's dispense with the first two definitions above and just take the articles for what they are: a (hopefully) entertaining way to learn about a person, place or thing depicted on stamp, along with one individual's back-story on that subject. Feel free to submit your own life experiences on stamps; if you need assistance, please don't hesitate to contact me!

The next EXPO planning meeting is scheduled for January 15, and as always, we are looking for members to help in the process of getting the next EXPO off to a good start!

Coming Attractions

2022

JAN. 5 MCSC—ARLINGTON Meeting
Program: Brief EXPO 2021 debrief & annual "Clean Out Your Philatelic Closet" sale

JAN. 15 EXPO Planning Meeting
Spring Creek BBQ, Cooper St., Arlington, 11 AM

JAN. 19 MCSC—EULESS Meeting
Program: Extended Show & Tell and philatelic Discussions

JAN. 25 MCSC—LAKE GRANBURY Meeting
Program: Annual "Clean Out Your Philatelic Closet" sale

JAN. 29 MCSC - Board of Directors Meeting
Location & Time: To Be Determined -> see emails by Skip

FEB. 2 MCSC - ARLINGTON Meeting
Program: By Skip Ely, topic is TBD

FEB. 16 MCSC - EULESS Meeting
Program: TBD

FEB. 22 MCSC - LAKE GRANBURY Meeting
Program: TBD

MAR. 2 MCSC—ARLINGTON Meeting
Program: TBD

MAR. 12 - 13 Spring Dallas Postcard Show
Comfort Inn & Suites, 700 Central Pkwy East, Plano
Free parking, \$3 admission

Secretary's Report

By Skip Ely



Applications Received

John Lyon (#642)

New Members

Patty Poore (#637)

Leslie Barton (#638)

Jerald Zimmerman (#639)

Xiaokang Huang (#640)

Donna Howell (#641)

Reinstatements:

Ray Ashley (#423)

Membership Summary – December 1, 2021

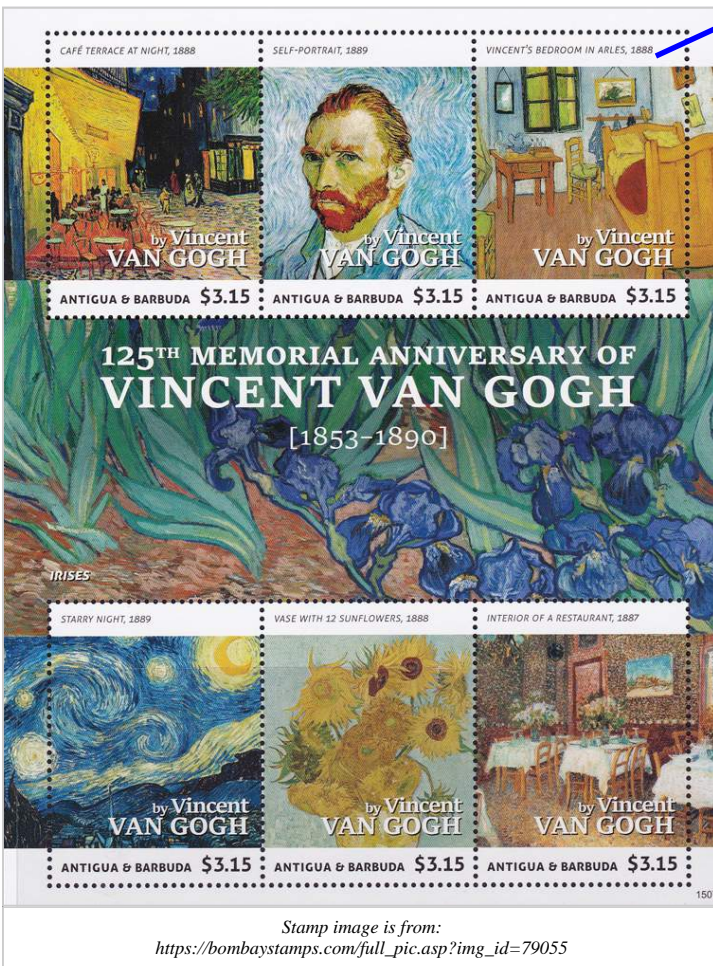
Membership as of November 16, 2021	95
Applications Received (counts as member next month)	1
New Members	5
Dropped for non-payment of dues	(0)
Resignations	0
Deceased	(0)
Reinstatements	1
Membership as of December 1, 2021	101

Van Gogh

By Peter Elias

I always thought his name was pronounced "Van Go", and according to various sources, we here in the USA are pronouncing it all wrong, it's more along the lines of "Van Hoff". That said, our family took an outing to see the "Immersive Van Gogh Exhibit" that is being held in Arlington at the Choctaw Stadium (currently and through end of February, 2022).

It was a very interesting experience to say the least. Many of his paintings were exhibited as reprints (on canvas). The real paintings are generally either privately held or in museums, and some have sold for as much as \$80 million! Thus it wasn't really feasible to exhibit the real paintings due to the immense security that would have been required! But the repro-



ductions were stunning, ones shown in the 2015 souvenir sheet shown above were at the exhibit. For example, the "Bedroom in Arles" painting from 1888 (upper right stamp) was reproduced as a 3-dimensional set, in which you could sit on the chair or bed and take a selfie (or in my case, have Annie take the photo).

One of the "sunflower" paintings (lower center stamp above) was also shown as a reproduction (4th one from the left below) of the many sunflower-themed paintings he painted.



In another part of the exhibit, you were in a large room in which you could sit on bench (or against bean bags against the wall on the floor) and contemplate various Van Gogh

imagery that was projected in 360° around you and at least 2 stories high; the imagery included some paintings whose images "morphed".

In another room, you could color your own Van Gogh painting and were given black & white drawings of the paintings (with a portion pre-printed in color) and you got to color the rest with crayons that were provided. I chose "Starry Night".



On the picture above, you can see the initial form and my attempt to the right. "Starry Night" is featured as the lower left stamp in the souvenir sheet.



When finished with your "artistic endeavor", they had a camera set-up which would then project your "painting" on the wall (until someone else's coloring would take the place of yours. Mine is shown by the blue arrow).

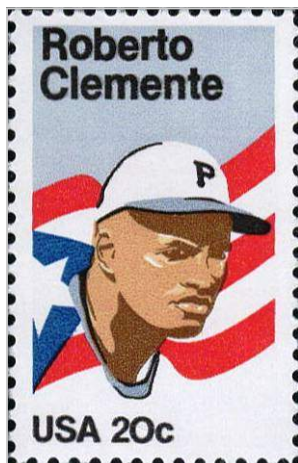
If you want to "immerse" yourself in some art, then I would highly recommend that you visit this exhibit in Arlington, scheduled to run through February 2022. More info is available at

<https://vangoghexpo.com/dallas/>



Roberto Clemente

By Pat & Bob Weidman



USA Scott #2097, shown to the left, was issued on August 17, 1984. It pictures Roberto Clemente, who played right field for the Pittsburgh Pirates.

Roberto Walker Clemente was born on August 18, 1934 in Cavolina, Puerto Rico. In his career with the Pirates, he won four National League Batting Titles. He was named "Most Valuable Player" for the 1966 season. He never

went hitless in a world series game and was named outstanding player in the 1971 series. On September 30, 1972, he was the 11th player to get 3,000 hits!

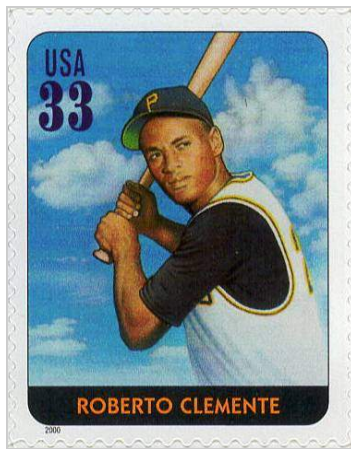
Roberto died on December 31, 1972 while flying aid to earthquake victims in Nicaragua. The plane he was flying in, crashed into the ocean. His body was never found.

He was the first Hispanic player elected to the National Baseball Hall of Fame. He was elected in a special election where the traditional waiting period of five years was waived.



The picture above was taken on our trip to Puerto Rico. We had wanted to visit the Roberto Clemente Sports City, a dream Roberto had for the kids of Puerto Rico, but it was closed. One day while walking around Old San Juan snapping photos, I spotted a booth selling photos of Puerto Rico. I saw the photo of Roberto and took a picture of it.

To the left is USA Scott#3408j, which was issued on July 6, 2000 and is from the "Legends of Baseball" sheet.



Media Mail

By Peter Elias

I am sure that many people when mailing a Scott catalog, want to use "Media Mail" as the preferred mailing option, as it would be the lowest cost for one of these books, which are rather heavy.

If you read the information at the USPS website at

<https://faq.usps.com/s/article/What-is-Media-Mail-Book-Rate>, it states: *Economy shipping solution for media items. Contents are restricted to books, sound recordings, recorded video tapes, printed music, recorded computer-readable media (such as CDs and DVDs).*

So you think "great", I can mail it as media mail since a Scott catalog is a "book"! But whoa! In a slightly smaller font it states: *Media Mail cannot contain advertising. Books shipping as Media Mail may contain incidental book announcements.*

Well, to my knowledge, all Scott catalogs contain dealer advertising in the "yellow pages" at the end of the catalog! That would deem the Scott catalogs to be ineligible as "media mail" by USPS definition, despite Scott itself not selling any of the stamps that are featured in their "reference catalog" (as opposed to a "sales catalog").

BUT: let's say that you are mailing a old Scott catalog, say one from 1928 (I actually have one of those...)? Any advertising in such an old catalog would surely not be considered "active advertising", and the book is technically a "collectible item". Would this qualify as "media mail"? How about a 100-year old "Sears Catalog"; obviously also not an active form of advertising.

Now, while I have not done so, take a current (or reasonably recent) Scott catalog to a US postal clerk and ask them, whether it qualifies as "media mail".

Da Stamps That Shoulda Been

By Peter Elias



Back in the late 1990's, the USPS tried to get kids involved or interested in stamps by coming out with "Stamper Cards" (in the same size as Baseball and other collectible cards). These featured various current stamp issues (which could be mounted on the back of the card), such a series of 5 featuring Bugs Bunny cards, one of which is shown above. In this case, the series of cards was about stamps that could have been. Unfortunately, this marketing effort didn't really seem to pay off for the USPS, despite Bugs being the "spokesperson" for this series of collectible cards which ran from approx. 1996 to 2000.

NIXIE Covid-19 Cover

By Peter Elias

While back in 2020, mail services were suspended between the USA and various countries, things seemed to be back to normal starting in 2021.

On October 27, 2021, I mailed a requested envelope of free stamps to a collector in Australia.

Almost a month later, on November 23, I received the envelope back with a yellow NIXIE label on it (see below).



For those that don't know, "NIXIE" is a USPS term for a piece of mail that is undeliverable as addressed; the word shows up at the top left corner of the peelable yellow sticker. According to [Wikipedia](https://en.wikipedia.org/wiki/Nixie): "It is derived from "nix", English slang for the German nichts ("nothing"), and "-i.e.", an item or a thing. ("Nix" used in English c. 1780–1790, "Nixie" c. 1880–1885.)".

The yellow sticker on the front simply has standard language about "Return to Sender / Refused / Unable to forward".



It gets more interesting on the back of the envelope, where there is a 2nd label, shown above (and electronically cropped from the entire back-of-envelope scan), it states that "Mail Service Suspended" and that I could get a refund at any USPS "Retail Office" (presumably "post office", but might imply other places...). I'm certainly NOT going to do that! A mail piece with these labels is worth far more than the \$1.30 in postage! So I'll just keep this envelope and will prepare another envelope once the restrictions are lifted.

To the right is a listing of all countries (as of November 25, 2021) from the USPS for which there are "International Service Disruptions". This list (or an updated one can be found at: <https://about.usps.com/newsroom/service-alerts/international/welcome.htm>

As you can tell, it states that service disruptions to Australia started on October 5, 2021. I mailed my letter on October 27, however, I simply didn't know that there were any service disruptions, and neither did I know about this particular webpage at USPS.com.

The listing for Australia has 7 different dated advisories, from October 5 back to June 1. The latest one says in particular:

Australia Post advises that operations at its Melbourne offices of exchange (IMPC codes beginning with AUMEL) are currently disrupted owing to government-imposed measures to prevent the spread of COVID-19. The associated restrictions are having a significant impact on the processing and delivery

of inbound and outbound mail items. Australia Post requests that mail destined for the Melbourne offices of exchange be sent to the Sydney offices of exchange (IMPC codes beginning with AUSYD) while these measures remain in place.

That doesn't really state though that 1st Class Mail International is suspended...

A listing for September 17 states:

The Postal Service™ has temporarily suspended international mail acceptance to Australia due to service impacts related to the COVID-19 pandemic. The service disruption affects Priority Mail International® (PMI).

A September 3rd listing states:

The Postal Service™ has temporarily suspended international mail acceptance to Australia due to service impacts related to the COVID-19 pandemic. The service disruption affects First-Class Package International Service® (FCPIS®), Commercial ePacket (CeP), International Priority Airmail® (IPA®) packets, International Priority Airmail® (IPA®) M-Bags, International Surface Air Lift® (ISAL®) packets, International Surface Air Lift® (ISAL®) M-Bags, and Airmail M-Bags.

That listing above specifically seems to list all services EXCEPT 1st Class Mail International.

The June 28 listing states:

Australia Post advises of new restrictions in place to minimize the spread of COVID-19. The post is experiencing disruptions to its daily operations due to emergency measures imposed by the government. These measures, which include lockdowns, state border closures, restrictions on movement and self-isolation for affected individuals, have caused disruptions with airlines and other transportation providers. The restrictions are having a direct impact on service quality for inbound international letter post services. Australia Post is therefore declaring a force majeure event for all inbound international letter post services effective June 28.

So as far as I can tell, the June 28 listing seems to be the earliest one that specifically suspends the inbound first class mail... although just 27 days earlier, Australia Post states that all letter-post items are no longer affected by the Covid-19 pandemic and they change it shortly after.

That all said, from November 3 to 13, I mailed out information requests to 168 foreign postal administrations, including some of those shown below; it will be interesting to see which one[s] will get returned (as that might several weeks).

Afghanistan 8-20-21	Guadeloupe 11-6-20	Nepal 6-28-21	Sri Lanka 10-5-21
Australia 10-5-21	Jamaica 11-5-21	New Caledonia 9-8-21	Sudan 10-22-21
Barbados 9-30-21	Laos 11-27-20	New Zealand 9-30-21	Syria 6-11-21
Belgium 10-7-21	Latvia 10-25-21	Panama 7-1-21	Tajikistan 5-21-20
Bhutan 7-23-21	Liberia 10-15-21	Papua New Guinea 10-8-21	Thailand 10-20-21
Brazil 6-8-21	Libya 9-17-21	Reunion 11-6-20	Timor-Leste 4-7-20
Central African Republic 10-15-21	Malaysia 6-3-21	Saint Pierre and Miquelon 11-6-20	Turkmenistan 1-26-21
Chad 10-15-21	Martinique 11-6-20	Samoa 8-27-21	Vanuatu 8-25-21
Cuba 4-10-20	Mauritius 7-1-21	Sierra Leone 10-15-21	Yemen 4-17-20
Eritrea 1-29-21	Mayotte 9-3-21	South Sudan 4-17-20	
French Guiana 11-6-20	Mongolia 3-19-21	Spain 6-14-21	

MCSC Granbury Meeting Minutes

November 23, 2021

By Madeleine Myers & Eugene Atkinson

Attendance:

- Nine members of the Lake Granbury Branch, Mid-Cities Stamp Club, assembled on Tuesday, November 23, at the Bentwater Activities Center (1800 West Emerald Bend Court). The group meets at 7 PM every 4th Tuesday (except in December).

Meeting:

- Host Dave Stockbridge began by introducing new member Ray Ashley, who has been visiting the club for some time.

Announcements:

- The recent EXPO in Grapevine was reviewed. Attendance this year seemed low but dealers were generally happy with the participation. The Silent Auction produced \$1800 in sales.
- The Arlington Christmas Party was set for December 1 and members were invited to sign up in advance.
- Stockbridge reminded everyone that the Granbury group would not meet next month and that the January 25 meeting program would be "Clean Our Your Closet." (Note: Winter meetings are always contingent upon weather conditions).

Show & Tell:

- Gary McNamee discussed his newest interest--the stamps of Great Britain. He described the software program that allowed him to produce album pages.
- Dave Stockbridge exhibited a Hungarian cover with Zeppelin stamps actually flown on the airship on the second day of issue.

Program:

- The program for the evening was by Ken Aldridge on stamp mosaics. Most are familiar with the colorful tiles, first produced for royalty and the wealthy of Greece and Rome and the popular subjects of birds and natural settings.

Closing:

- \$10 gift certificates went to Les Barton, Jim Myers, Ray Ashley, and Dave Stockbridge. Bob Coleman won a sheet of "Legends of Hollywood" stamps.

Trip Report: Longview Stamp Club

By Keith Parris

Laurie and I made it to the Longview Stamp Club this past Tuesday evening (December 7). Counting Laurie and myself, there were eight people present (four men and four women); I think this is the largest attendance I have seen at meetings of the club.

The meeting this past Tuesday evening was casual conversation and consumption of refreshments. The conversation included a few remarks specific to stamp collecting, postal delivery, and general topics.

There was also a concert at this church; therefore, finding a parking place was a challenge; this is the first time I have seen another event this big happening at the same time as the LSC meeting.

MCSC Arlington Meeting Minutes

December 1, 2021

By Skip Ely

Attendance:

- 25 members and guests showed up for the annual MCSC Christmas party at the Bob Duncan Center.

Meeting:

- Regular business reports were suspended for the meeting. Instead, we enjoyed ham and turkey from Boston Market, as well as side dishes and desserts provided by the membership. Our thanks to treasurer Judy Christmas and Center coordinator Toni Nailon for their tireless efforts to organize the event and facilitate the arrangements.
- At the conclusion of the meal, Stanley Christmas conducted a gift exchange. As member numbers were called, they could choose a wrapped gift at the front table, or "steal" an opened one from someone whose number was called earlier. All was in good fun, and no one seemed too disappointed.

Conclusion:

- The meeting concluded about 8:20 PM.

Annual Club Christmas Party

by Judy Christmas



If you missed the Annual Mid-Cities Stamp Club Christmas Party this year you were lucky. Boston Market was way behind on delivering our food. Almost an hour late. Members were hungry. They were to have called me, but sadly not such call came.

The Party was held on December 1st, at the *Bob Duncan Community Center*. At least Boston Market did eventually bring the food and they provided plates, plastic silverware and serving utensils. We had turkey, mashed potatoes, gravy, sweet potato casserole and cornbread. Many members brought salads, green bean casserole and other side dishes. And there were many pies and other goodies to finish off the meal. There were 26 members and their guests present.

After tummies were full, we began the exchanging of gifts. A gift could only be taken twice, then it was frozen. We continued doing this until all numbers had been called. The exchange went very smoothly and there were some really nice gifts.

I would like to say a special thanks again to **Bert Hildebrandt** and his lovely wife **Bert** for again providing all the festive decorations for the tables. They always make the hall come alive with the feeling of Christmas in the air. We hope to see more of you at next year's Christmas Party..

**Merry Christmas
&
Happy New Year to Everyone!!**

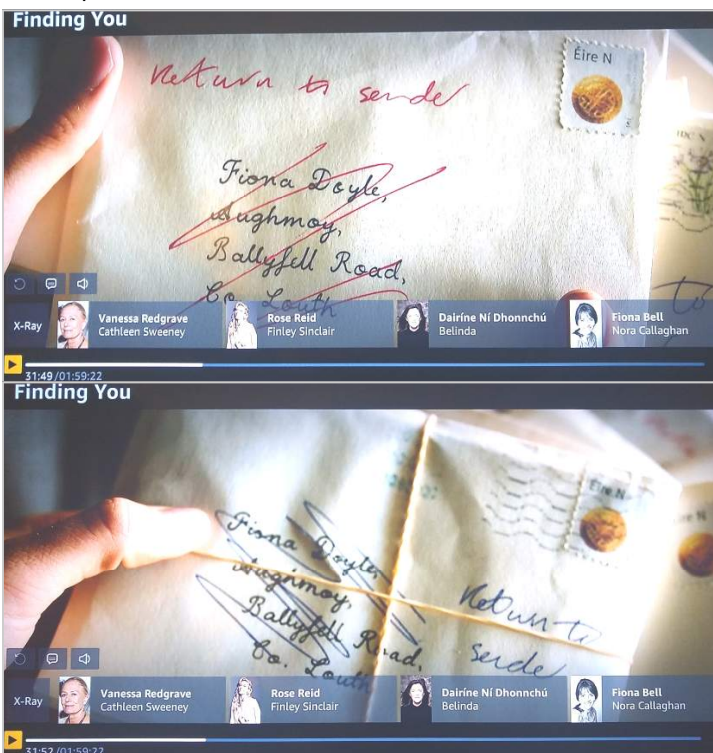
(Christmas Party Photos are on page 13)

TV Philately - Finding You

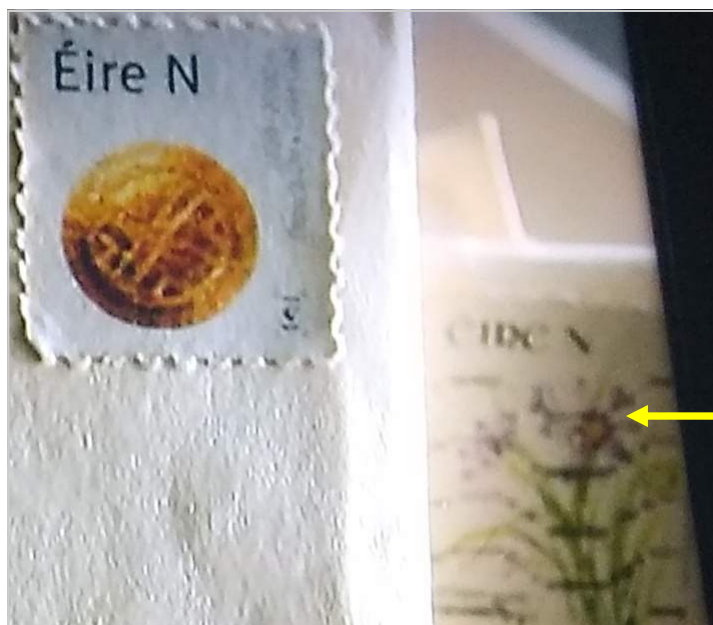
By Peter Elias

In the 2021 “coming-of-age” romantic film “Finding You”, there is a brief moment where the main character (played by Rose Reid) looks at a drawer full of envelopes addressed to an elderly lady (played by Vanessa Redgrave) that she is taking care of.

This bundle of letters all were addressed to the sister of the elderly lady and were marked “return to sender”. Two envelopes are visible as shown below.



The movie takes place in Ireland. While parts of the address are fictional, the last line of the address says “Co. Louth” (County of Louth), which is located about 45 miles north of Dublin. The credits in the movie state that it took place mostly in Carlingford, which is on the eastern tip of the County



of Louth, so at least part of the address is relevant to the film.

That said, both envelopes show what appears to be the same stamp, which is definitive-sized, see an enlargement of stamp on the envelope at lower left.

I'm not an expert on Irish stamps, so I had to dig out a recent (2018) copy of the Scott catalog. I started at the most recent listings and working backwards, I found this stamp to be Scott #2135 issued in 2017. Stamps such as this, inscribed with an “N” denomination are for domestic use within Ireland and Northern Ireland only (“W” inscribed stamps are for world-wide usage). In 2017, the “N” stamps were sold for €0.72 (=US\$0.81). Currently, as of mid-2021, the “N” rate is €1.10 (approx. US\$1.24), so rather a steep increase in just 4 years; not to mention that \$1.24 is a high rate to begin with as a domestic rate for a country the size of Ireland.

Back to the stamp. According to Scott's; the real stamp features “serpentine” die-cutting perf 14, and the example on the stamp seems to show regular style perforations and by all appearances, closer to perf 10 - 11!

Both stamps have the appearance of having me scanned and reprinted on paper with fake perfs added and glued to the envelope (but not very well).

Since I don't own a copy of this stamp I tried to find a better illustration of it on the internet, but couldn't find any so far at eBay, Delcampe, hipstamp nor bombaystamps (a new issue dealer)...

What I can say is that some of the vertical text on the right side of this stamp has been obliterated or smudged. The design itself is of a “golden disc” and part of a series of stamps about Irish artifacts. The vertical text on the right side is two lines and should read: “2200-2000 BC” and “Diosca Oir * Gold Disc”; and on the lower right some sort of symbol that I can't identify (even from the Scott illustration).

On one envelope, the stamp is not postmarked, on the other envelope it bears a wavy-bar machine cancel, although the location and date info is not readable.

Although only partially visible behind one of the envelopes (see illustration to the left) is a stamp that appears to have flowers in the design and an “N” denomination. I finally found this stamps as Scott #1713, issued in 2007 and an illustration (see directly below) is from the [Colnet](#) website. The screen shot of this though is too indistinct to draw any other conclusions, more than likely also a “reprint” for prop purposes, just like the two “gold disc” stamps.

So it does appear that the “prop department” got some of the stamp stuff correct (and no comment on the machine cancel); I seriously doubt that these are real stamps, but instead poorly scanned/reproduced copies. I honestly do not know what the law in Ireland is in regards to reproducing active stamps, even if only for use as a “prop” in a movie where it appears for a split second...

I know that one way around not having to deal with illegally reproducing stamps (even if for prop purposes) is to simply create fantasy stamps, but then I had to give them a bad grade!

But here's a thought: If the movie takes place in current or recent times, rather than try to deal with making a plausible fake, why not just send someone out to buy a current stamp? I'm sure that a trip to the post office (or a stamp shop if one is nearby), would be less expensive than the effort to create what you see to the left and look real (for the split second that it is up on screen)!



Julierpass

By Peter Elias



In 1986, I drove over almost every major mountain pass in Switzerland. One of these was the Julierpass, which is at 2,284 meters above sea level (7,493 feet) is the ninth highest drivable mountain pass road in Switzerland (the highest is the Umbrail/Stelvio pass at 2,501 meters / 8,205 feet).

The Julierpass connects Silvaplana (near St. Moritz) on the south and Tiefencastel on the north side of the pass, it is a 43 km (26.7 mile) drive. Which doesn't sound like much, then one rarely drives more than 40 mph due to all the switchbacks.

I have driven over the Julierpass many times. The photo above was taken in late fall / early winter of 1986 when I lived in Switzerland that year, and while other parts of Switzerland didn't have snow, the Julierpass (and many others already did), and was probably a bit sketchy to drive over with my Ford Taunus (with its 1.6 liter 4-cylinder engine and manual transmission and rear wheel drive).



The red circle shows the location of the Julierpass



Now what's with the 2 blue arrows on the picture above you might ask? There are two of these, one on each side of the pass. It is the same object that you see Annie & Marcos in front of.

So what is it? These are remnants of a sanctuary and date back to the Roman days!

All fine and well, but where's the philatelic aspect of all of this? Searching for stamps that have something to do with the Julierpass or the Roman columns proved fruitless, however, I did find the Swiss postal card from 1935 that you see above. It has a

Grrr...

By Peter Elias

It's nice to get envelope with soakable USA commemoratives on them! Except when the USPS clerk decides to slap on a PVI (postage value indicated) \$0 label right on top of a nice set of "Celebrate the Century" commemoratives! There would have been plenty of room above the tracking label for the PVI strip...



It took a little bit of patience, but I was able to finally peel the PVI sticker off the stamps, leaving the stamps intact and no sticky residue; I can now put these stamps into my next pile of stamps to be soaked off!

But I mean really ... would it hurt to have someone train postal clerks a bit more? Shouldn't this many nice stamps on an envelope be a hint that collector is involved, and that they would not like to have stamps ruined by having items stuck on top of them?



November 4, 1935 postmark from the "Winteralpenpost" (winter alpine mail service) with a "Julierpass" on the lower part! There is a typewritten note "Julierpost" (Julier mail service) on the left side of the card and a rubber stamp below it stating that Julierpass Busrider* were delayed by several days due to bad weather". I found this scan at <https://medizphilatelie.com/en/news-from-the-arge/sindelfingen-2021-cancelled/>. I'd love to own that card, but since it was "philatelic", I imagine others are out there, and I'll look for one. But at least I've managed to tie another part of philately to my own life.

*In Switzerland "Autocar" means bus or coach, weird as that sounds... So, "Aufahrt" here means bus ride...

TV Philately: The Healer

By Peter Elias

I recently watched the 2016 movie "The Healer" on Amazon Prime, about a guy that discovers that he has the power to "heal" people (apparently just by being near them).

He needed to "accept" his gift, which he did not do immediately since he was a bit confused about it all.

At one point in the movie, he did help a young girl named Abigail that had terminal cancer by having her spend the weekend with him (to make the girl's parents feel better).

The girl later sent him (Alec) and his girlfriend (Cecilia) a letter asking them to call her. That envelope is shown in a typical brief split-second shot in the film and shown here as a screen shot at about 1 hour 34 minutes into the movie.

So what do we see:

- A letter addressed to "Alec and Cecilia" in Lunenburg, NS BOJ 2CO (Nova Scotia). That postal code of BOJ 2CO is one of two postal codes actually assigned to Lunenburg, which does exist, as does the address of 619 Blue Rocks Rd (I checked it at Google Maps, the "street view of which shows the house where part of the movie takes place!).
- The return address appears valid as well (619 Elizabeth St, Fredericton, New Brunswick), with a postal code of E2A 2Y3 (although Google Maps lists it as E3A 2Y3).

So far, so good, as far as the addresses are concerned, and yes, the movie does give a tribute to an Abigail at the end that showed her dying in 2014, so whether the return address is the real girl's address, is unknown to me.



- The stamp, however, is another matter. Since this letter was supposedly mailed within Canada from New Brunswick to Nova Scotia, that is definitely NOT a Canadian stamp (despite a Canadian flag being shown). It appears to be a modified version of a stamps.com "PhotoStamp" (which were only used here in the USA). There's no country name, nor a denomination shown, only a blurred 2D matrix code and undecipherable text underneath.
- Additionally, the stamp (see close-up inset into the screen shot) has what appears to be a faint impression of a wavy-line machine cancel and parts of a circle, but none of it ties to the envelope, and that cancel is at an angle that normally would not happen during machine processing.

So again, close, but no cigar (as far as the philatelic elements are concerned)!

2022 Mid-Cities Stamp Club Membership Renewal

__ Mr. __ Mrs. __ Ms. __ Miss Name: _____ Date of Birth: ____/____/____
(First) (M.I.) (Last) (Complete if under 18)

__ Check here if information is unchanged from 2021 and skip to signature line below.

Home Address: _____ City _____ State _____ Zip _____ - _____

Email: _____ Home Phone: _____ Mobile: _____

Collecting Interests: _____

Other Stamp Organizations with membership numbers (if applicable): _____

__ APS # _____ __ ATA # _____ __ TPA # _____ Other: _____

Permission is granted to make the information above available to other club members. Indicate anything you do NOT want shared: _____

Signature: _____ **Date:** ____/____/____

Membership Level:

__ \$12 Regular Adult (emailed or online newsletter)

__ \$22 Regular Adult (with mailed newsletters)

__ **\$25 Sponsor Membership**

__ \$35 Sponsor (with mailed newsletters)

__ \$6 Additional Adult (only 1 newsletter copy)

__ \$4 Youth (under 18; add \$10 if printed newsletter is desired.)

Make check out to 'Mid-Cities Stamp Club' and mail this form with payment to:

Skip Ely, MCSC Secretary, 5512 Shady Meadow, N. Richland Hills, TX 76180-6616

CLASSIFIED BOURSE

Announcements

All club members that are current with their dues payments are entitled to FREE ads in this space! Please send ad to: Peter Elias, P.O. Box 940427, Plano, TX 75094-0427, give it to me at a meeting, or e-mail me at: peter@pcelias.com

For Sale

US POSTAGE – from our huge surplus: 1c – 20c : 70% of FV; 21c – 50c : 80% of FV. Send any amount (min \$10), specify group (70%, 80%), and receive mix of values back in FV as indicated above. Clean, F/VF only. Plate or Zip block included for every \$10 remitted. Remit (check or MO) to: J. Myers, P. O. Box 2047, Coppell, TX 75019. TX orders, add 8% sales tax. We cover return postage, S/H charges. Can also take PayPal (same terms). jasdmyers@earthlink.net 5/15

Wanted to Trade

I have general (unsorted) worldwide & used USA stamps (mostly beginning collector material) available to trade for your items such as worldwide revenue stamps & Framas. Contact Peter Elias at peter@pcelias.com 9/16

Wanted

Postally used “ATM” stamps (i.e.: machine vended), such as Framas, from around the world; would prefer on cover or postcard if possible. Contact Peter Elias at info@stvincentstamps.com 8/14

For Sale

I now have a new website in which I have listed all my used **duplicates (many thousands)**. They are arranged in Scott number sequence within country. Do take a look, and select any that you want. I charge 1/3 catalogue value, post paid. The URL is www.kenwills.net Contact me at wills@airmail.net. Happy hunting! 3/19

Philatelic Reference CD's. The following self-running, philatelic reference CD's, each containing hundreds of scans, are now available:

- **APC Conversions 2012-2014 (NY2016 Vermeil Award!!)**
 - **Usage of British Empire War Tax Issues** (exhibit)
 - **Airport Philately** (800+ scans of Airports on Stamps)
 - **4 Rings—The History of Audi (Great for any car lover!)**
 - **My Life on Wheels** (autobiography via USA personalized postage)
 - **St. Vincent Philatelic Reference Scans (1,700 items!!)**
 - **St. Vincent Postcards** (300+ postcards from 1900 to 2007)
 - **Vintage Swiss Postcards 1898-1959 (900+ postcards !!)**
- Special MCSC Member price is only \$ 7.95 each (Regular price is \$14.95 to \$19.95).. Contact peter@pcelias.com 11/21

MOVED, BUT SALE CONTINUES! Special discounts to MCSC members for Swiss, Austria, Liechtenstein issues, 25% and LESS of catalog values. All orders postpaid! I also accept PayPal if you wish! John Barrett, Ph.D. Contact info: jstrubel-boy@aol.com 12/14

I have over **10,000 auctions** on delcampe.com @ 35% of Scott or less. Worldwide & US stamps, covers and FDCs. For more info contact Denny Ludlow @ (713) 898-1872 10/15

Comic Strip - Blondie (Who is Bernard Barnaby)

By Peter Elias

BLONDIE

By Dean Young



deliver a letter addressed to a Bernard Barnaby, at the same address as Dagwood Bumstead. So sure, that's sort of happened to me. I've been at my current house address since 1996 (before that, it was empty land), but I've received mail addressed to other people that have nothing to do with me, especially flyers addressed to an "A You" (could that meant to be "Hey You"?). Since these are not actual "letters", but just obvious junk mail, I just chalk this up to either "fat fingered typing" (i.e.: a digit wrong on the street address for example), so the item gets chucked. Now if mail ends up at our house, but addressed to someone else and someone else's address, then I'll either walk it over to their house in person (quicker than the USPS re-delivering it!) or put it back in the box marked "mislabeled". But I have yet to have our mail carrier actually ask if a mail piece is for someone that normally doesn't get mail at our house.

This Blondie comic strip was in the Dallas Morning News on 11/25/2017.

The strip shows Mr. Beasley, the mailman (or to be politically correct - the "mail carrier") attempting to

Inverted Jenny Envelopes

By Peter Elias



Since they were issued in 2013, I have bought quite a number of the \$12 sheetlets of the "Inverted Jenny" \$2 stamps. Mind you, not to save them, but to actually use them as postage.

Most eBay lots or orders that I mail are either (mostly) 1st class package or (occasionally) Priority Mail. While I could save money by using a "commercial base" postage label via eBay or PayPal, I prefer to use stamps, since most of my customers are stamp collectors. And even if they aren't, they'll still get stamps on their package!

So far, best as I can figure it out, I've bought 189 sheets of the inverted Jenny's so far; to the left is the most recent batch of 20 that I ordered from the caves (which is the only place that has them now, as all remaining ones were recalled from the post offices).

As with all the Jenny's I've bought so far, opening these 20 envelopes did unfortunately not result in a "winner" (i.e.: one of the 100 envelopes with right-side-up Jenny's).

But in going through this many sealed envelopes, I have noticed something.



Most envelopes look like the one immediately to the left.

Now glance at the other two envelopes beneath it.

Hopefully you'll notice a difference: the color of the stamp illustration.

The two lower envelopes have the stamp illustration in different colors, best as I can determine, the middle one a sort of darker red

shade and the lower one a medium green shade. While there may be better names for these shades, there's definitely black (or dark gray) for the top illustration, and some sort of color shades in the darker red and medium green spectrum for the middle and lower illustrations.

I've provided an enlargement here to the right, so it is hopefully a bit more obvious.

Of course the black illustration means that the envelopes were printed in a single color, while with the other two illustrations would have required a 2 color printing process for the envelopes.

But wait, there's more! When looking at a close-up of the "perforation" portion of

the illustration:

on the black one, it appears that they cropped the image a bit and "chopped off" the tips of the perforations, while that is not the case on either of the red/green illustrations!

Now, let's compare the "screening" of the black vs. either of the red/green illustrations (see right).

As you can see, the screening is

rather coarse on the black stamp and very fine and sharp on the right stamp!

So based on the above information, they must definitely have had more than one printing of the envelopes. The text portion is the same, but they switched from single-color to multi-color. The black illustrations are more prevalent. And we don't know in what order these envelopes were printed nor why they chose to do this!



Been There, Done That



show like this (since I was only 10 at that time...).

Fast-forward to 1986. That year I spent approx. 10 months living in Switzerland as part of my first post-college job, where I was hired by a large multi-national Swiss company (Alusuisse - world's 4th largest aluminum and related products producer in the world at that time). The job took me to Kreuzlingen, where I spent most of my time in the factory there



(which was known as the inventor of aluminum foil as we now know it).

While I rented a furnished apartment in 1986, it was only 25 square meters in size (= 250 square feet, so yeah, tiny!) only had a twin bed, a shelf, a stand-

Tatort

by Peter Elias

"Tatort" is a German TV series, of the "Crime/Drama" variety that started in 1970. While we could have watched this series in 1970 when living in Switzerland, my parents would not have let us kids watch a

alone closet, a table & chair all in one room! There was no TV nor a comfy chair to sit in (although I did have a balcony with a nice view of



Lake Constance in the distance; see picture above).

While I used my year wisely and saw as much of Switzerland and surrounding areas as possible on weekends or vacation, there were times during the week that I wanted to watch television, and so I rented a TV, a VCR and a comfy chair. The photo to the left is the only picture I have of that room, viewpoint from the balcony entrance and where the rental TV stood...

One of the shows that I videotaped was "Tatort", being broadcast on one of the German TV channels that I received. According to Wikipedia, there have been over 1,100 episodes from November 1970 to January 2020. The show is a "police procedural" series and is filmed in various cities in Germany.

Out of the 100 hrs of German TV that I taped on PAL VHS tapes 35 years ago, I still haven't watched all of them! Given that these are "PAL" (not "NTSC") encoded VHS tapes, they are not easily viewable in the USA unless you have a PAL-capable VCR that can also convert the signal to NTSC (which I do have!). So I have transferred all of these PAL VHS tapes to NTSC DVD's many years ago, yet still haven't seem to gotten around to watching them!

Oh, and "Tatort" means "crime scene" in German...



Be sure to visit the Club website on the Internet:

← <http://www.mid-citiesstampclub.com>

For recent online newsletters see

<http://BetweenThePerfs.com/MCSC> →

(for older newsletters see the club's private groups.io website)



stampsuniversal.com

Visit us at area Stamp Shows



- * TSDA
- * TEXPEX
- * HOUPEX
- * EXPO

US/WW Classics, Modern, SONs

Visit our new online store

@ <http://www.stampsuniversal.com>

James D. Myers
P. O. Box 2047
Coppell, TX 75019
(972) 304-1671

Exp. 12/22



cunninghamstamps@aol.com

Exp.12/22

(214) 546-1179

Cunningham Philatelics

Philatelic Consultants

Elusive Items
Stamps and Covers

Collections
Appraisals

THOMAS L. CUNNINGHAM
APS # 082424, TSDA

P.O. Box 863237
Plano, TX 75086-3237



Exp.12/22

Specializing in United States Stamps
Member APS, ASDA, NSDA

Kirk McKenzie
kirkmckenzie@cox.net

1001 North Fulton
Tulsa, Oklahoma 74115
918-836-1681

President's Report

By Richard Hildebrandt

Greetings from your overworked and badly behind schedule President. I am sure all of you have many standing commitments in addition to those special ones that come at this time of year. I will keep this message brief in order to fulfill my duties on the home front and maintain peace. I want to thank our gracious editor for allowing me to miss several of his deadlines.

As we enter a new year, the club faces some challenges. Elections are later this year and we desperately need some fresh people to step up and take a leadership position. We are always in need of folks to present programs. The programs that members present are what makes the meetings worthwhile.

Some of our members have been filling multiple roles for a number of years and could use assistance to lighten their load. Having an assistant / backup makes thing flow much better and spreads the work load around and reduces burnout.

We are planning on having both an EXPO and Board of Directors meeting this January. Every club member is always invited to attend these meetings and provide their inputs. I realize that distance precludes some members from attending in person, but we gladly accept inputs via e-mail or snail mail. New ideas help to enliven the meetings and hopefully keep people attending. I know they certainly don't come to hear me or see my pretty face.

Philatelic Firsts

by Ken Aldridge



Sir Alfred Hitchcock is shown in the U.S. Postal Issue, August 3, 1998 (Scott 3226)

He was born August 13, 1899 in Leytonstone, London and died April 29, 1980 in Los Angeles, California.

He directed over 50 feature films over a span of six decades and earned the title of Master of Suspense. In 1979 Hitchcock was given a Life Achievement Award by the American Film Industry. He also appeared on American television, host-

ing and producing television anthology from 1955 to 1965.

From 1941 to 1961 he was five times awarded Best Director by the Academy Awards. His 1940 film, "Rebecca," won the Academy Award for Best Picture and he won Best Director.

The silhouette depicted in the left corner of the Hitchcock stamp is an actual cutout from the gray background. This is the first U.S. Postal Service issue to have such a cutout.

Christmas Party Photos (by Judy Christmas)



Mailing Items Overseas

If you are mailing any items outside of the USA, please remember that there are various "service interruptions" and even "mail suspensions". You can get the current status of these from the USPS website at:

<https://about.usps.com/newsroom/service-alerts/international/welcome.htm>

Thank You

Thank you to Jonathan Topper (of Topper Stamps in Houston) for donating several boxes of stamps to MCSC. One box contained mostly APS Journals (and some others); the other box had an older worldwide album with various stamps, various FDC's and a host of loose stamps from the USA & foreign, both on and off-paper.

Too Close To The Edge

By Peter Elias



A "fatal" philatelic flaw that I see many people make, both collectors and non-collectors alike, is that they seem to think that it is necessary to put stamps right at top & right edges of the envelope.

I mean sure, the USPS equipment expects stamps to be in the upper

right corner, unfortunately, USPS mail handling can be rather rough sometimes, and stamps at the top & right edges get damaged and ruin the stamps (as you can see above) more easily. While this might be excusable for the general public, whoever created this envelope that included a 1920 commemorative surely must have been a collector and they should have known better! I generally place my stamps at least 1/4" to perhaps 1/2" from the edges to avoid the kind of damage you see above!



MEET & EAT for January 2022

by Judy & Stanley Christmas

"Meet & Eats" are held before our club meetings. All club members and their guests are welcome. We will gather at 5:00 PM and start ordering at that time. However, latecomers can order when they arrive or just come by for a visit. Meals should be over around 6:15 to 6:30 PM with the Arlington new meeting start time now being at 7:00 PM rather than 7:30 PM.

Meet & Eat locations will be included the club's broadcast messages. NOTE: All locations are subject to change.

--> Official Meet & Eat get-togethers prior to the club meetings have resumed! See updates for mask policies as published or announced by local, regional & state authorities or individual restaurants.

ARLINGTON


January 5 Jay Jay Café, 1001 S Bowen, Arlington, TX 76013, (817) 861-1060

EULESS

January 19 Chili's, 2101 Airport Freeway, Bedford, TX 76021, (817)-545-0012

GRANBURY

January 25 Grumps, 3503 East Hwy #377, Granbury



Estate Appraisals

Topper Stamps & Postal History

Jonathan Topper
10480 Grant Road
Suite 117
Houston, TX 77070
832.518.6558

jonathan@topperstamps.com

www.topperstamps.com

Wanted to Buy

Texas Precancel Stamps. Contact Rick Howell at Rick.howell1@tx.rr.com

5/19

Wanted to buy or trade for: **Worldwide unusual EFOs, postal counterfeits.** Odd US 20th century auxiliary markings, US 1934 and 1935 Christmas Seals on and off cover and publicity material, Korean War postal history from US and other UN contingents, and any other US philatelic material with an interesting story. John Hotchner, PO Box 1125, Falls Church, VA 22041, or jmhstamp@verizon.net

2/15

Various USA **Scott #C2 & C3 on covers & cards** are needed for my U.S Air Mail collection. Please forward scans of the covers / cards along with asking price(s) to Don Jones at adjaams@aol.com Thank you.

2/21

Mid-Cities Stamp Club "Stamping Around" Newsletter
c/o Peter Elias
PO Box 940427
Plano, TX 75094-0427

- Don't Forget:**

 - 1) EXPO Planning Mtg - January 15
 - 2) "Clean Out Your Closet" at the January meetings in Arlington & Granbury!
 - 3) Board of Directors Mtg - January 29